

Product datasheet for **TA505023S**

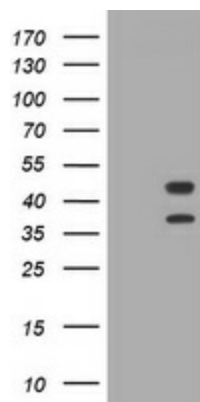
STING (TMEM173) Mouse Monoclonal Antibody [Clone ID: OTI4H1]

Product data:

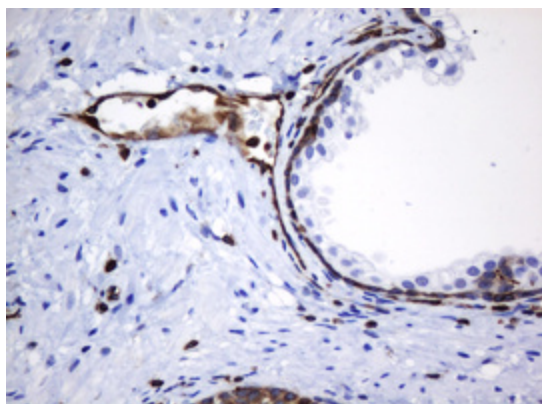
Product Type:	Primary Antibodies
Clone Name:	OTI4H1
Applications:	IHC, WB
Recommended Dilution:	WB 1:2000, IHC 1:100
Reactivity:	Human
Host:	Mouse
Isotype:	IgG2a
Clonality:	Monoclonal
Immunogen:	Full length human recombinant protein of human TMEM173(NP_938023) produced in HEK293T cell.
Formulation:	PBS (pH 7.3) containing 1% BSA, 50% glycerol and 0.02% sodium azide.
Concentration:	1 mg/ml
Purification:	Purified from mouse ascites fluids or tissue culture supernatant by affinity chromatography (protein A/G)
Conjugation:	Unconjugated
Storage:	Store at -20°C as received.
Stability:	Stable for 12 months from date of receipt.
Predicted Protein Size:	42 kDa
Gene Name:	stimulator of interferon response cGAMP interactor 1
Database Link:	NP_938023 Entrez Gene 340061 Human Q86WV6
Synonyms:	ERIS; hMITA; hSTING; MITA; MPYS; NET23; SAVI; STING
Protein Pathways:	Cytosolic DNA-sensing pathway, RIG-I-like receptor signaling pathway



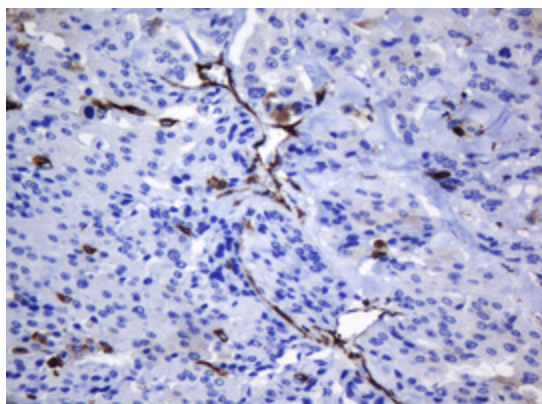
[View online »](#)

Product images:


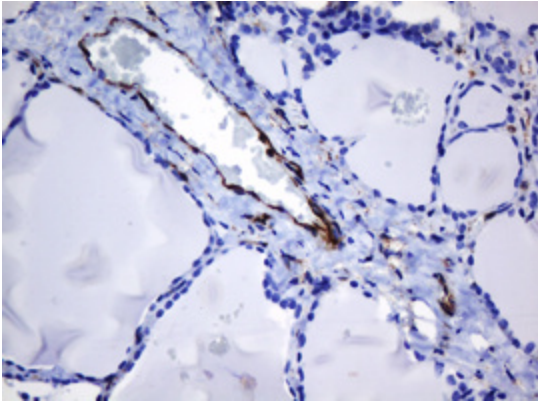
HEK293T cells were transfected with the pCMV6-ENTRY control (Left lane) or pCMV6-ENTRY TMEM173 ([RC208418], Right lane) cDNA for 48 hrs and lysed. Equivalent amounts of cell lysates (5 ug per lane) were separated by SDS-PAGE and immunoblotted with anti-TMEM173. Positive lysates [LY405006] (100ug) and [LC405006] (20ug) can be purchased separately from OriGene.



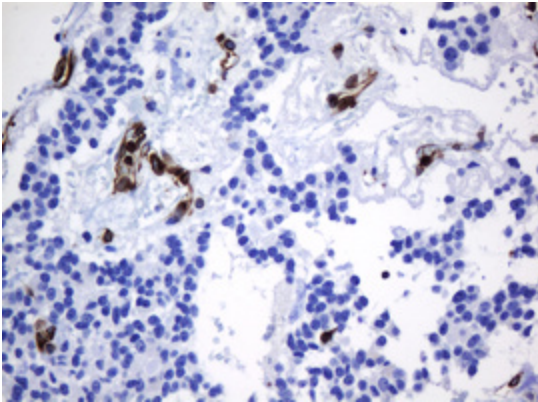
Immunohistochemical staining of paraffin-embedded Human prostate tissue within the normal limits using anti-TMEM173 mouse monoclonal antibody. (Heat-induced epitope retrieval by 10mM citric buffer, pH6.0, 120°C for 3min, [TA505023])



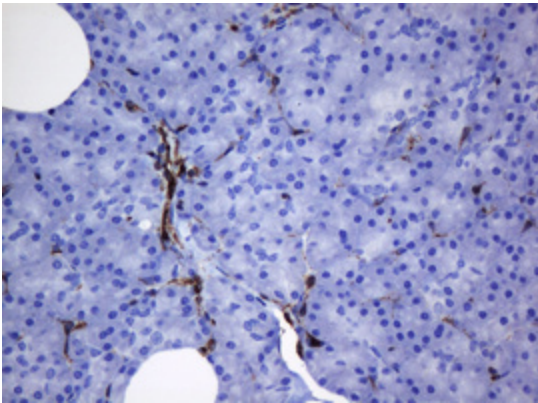
Immunohistochemical staining of paraffin-embedded Carcinoma of Human thyroid tissue using anti-TMEM173 mouse monoclonal antibody. (Heat-induced epitope retrieval by 10mM citric buffer, pH6.0, 120°C for 3min, [TA505023])



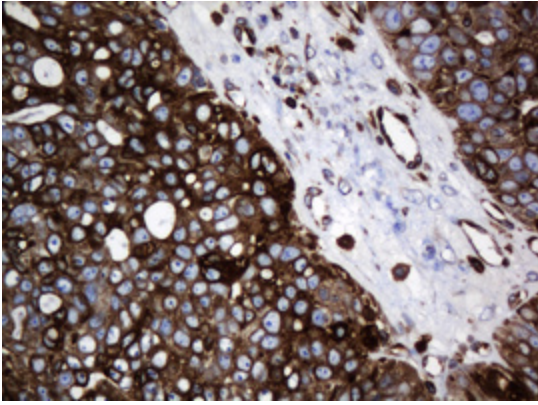
Immunohistochemical staining of paraffin-embedded Human thyroid tissue within the normal limits using anti-TMEM173 mouse monoclonal antibody. (Heat-induced epitope retrieval by 10mM citric buffer, pH6.0, 120°C for 3min, [TA505023])



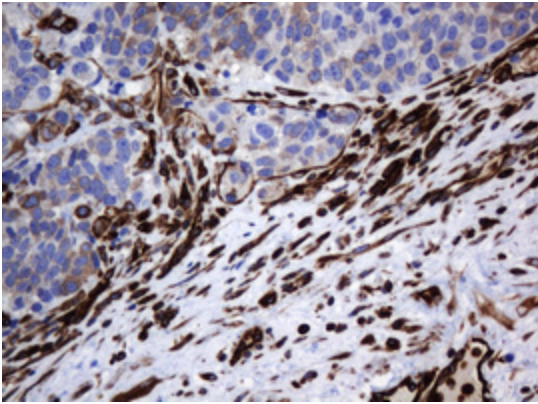
Immunohistochemical staining of paraffin-embedded Carcinoma of Human pancreas tissue using anti-TMEM173 mouse monoclonal antibody. (Heat-induced epitope retrieval by 10mM citric buffer, pH6.0, 120°C for 3min, [TA505023])



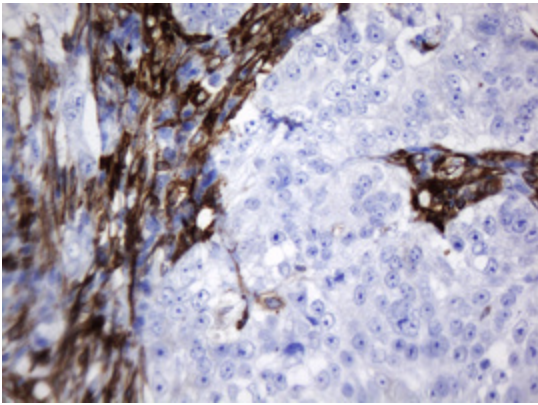
Immunohistochemical staining of paraffin-embedded Human pancreas tissue within the normal limits using anti-TMEM173 mouse monoclonal antibody. (Heat-induced epitope retrieval by 10mM citric buffer, pH6.0, 120°C for 3min, [TA505023])



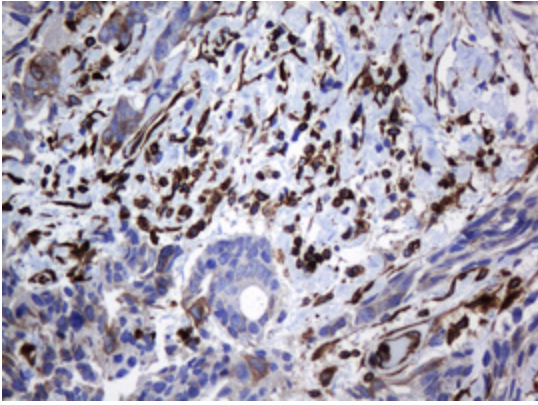
Immunohistochemical staining of paraffin-embedded Adenocarcinoma of Human ovary tissue using anti-TMEM173 mouse monoclonal antibody. (Heat-induced epitope retrieval by 10mM citric buffer, pH6.0, 120°C for 3min, [TA505023])



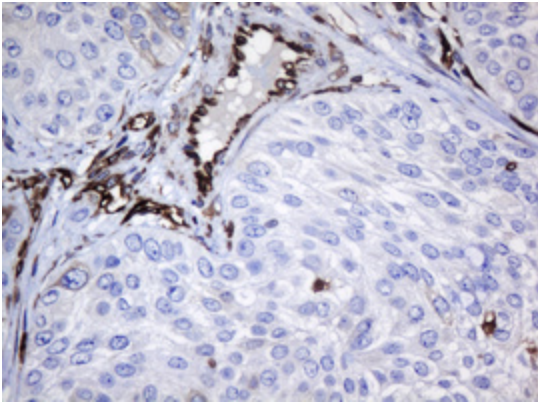
Immunohistochemical staining of paraffin-embedded Carcinoma of Human lung tissue using anti-TMEM173 mouse monoclonal antibody. (Heat-induced epitope retrieval by 10mM citric buffer, pH6.0, 120°C for 3min, [TA505023])



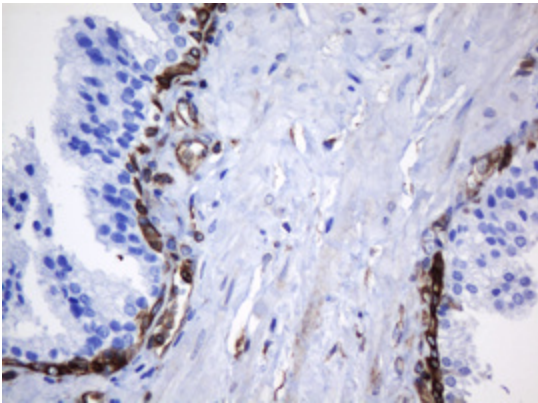
Immunohistochemical staining of paraffin-embedded Adenocarcinoma of Human colon tissue using anti-TMEM173 mouse monoclonal antibody. (Heat-induced epitope retrieval by 10mM citric buffer, pH6.0, 120°C for 3min, [TA505023])



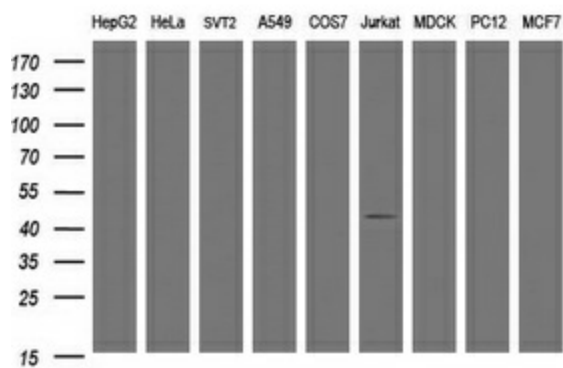
Immunohistochemical staining of paraffin-embedded Adenocarcinoma of Human breast tissue using anti-TMEM173 mouse monoclonal antibody. (Heat-induced epitope retrieval by 10mM citric buffer, pH6.0, 120°C for 3min, [TA505023])



Immunohistochemical staining of paraffin-embedded Carcinoma of Human bladder tissue using anti-TMEM173 mouse monoclonal antibody. (Heat-induced epitope retrieval by 10mM citric buffer, pH6.0, 120°C for 3min, [TA505023])



Immunohistochemical staining of paraffin-embedded Carcinoma of Human prostate tissue using anti-TMEM173 mouse monoclonal antibody. (Heat-induced epitope retrieval by 10mM citric buffer, pH6.0, 120°C for 3min, [TA505023])



Western blot analysis of extracts (35ug) from 9 different cell lines by using anti-TMEM173 monoclonal antibody (HepG2: human; HeLa: human; SVT2: mouse; A549: human; COS7: monkey; Jurkat: human; MDCK: canine; PC12: rat; MCF7: human). Dilution: 1:2000