

Product datasheet for **TA504970S**

UBC6e (UBE2J1) Mouse Monoclonal Antibody [Clone ID: OTI3E6]

Product data:

| | |
|-------------------------|---|
| Product Type: | Primary Antibodies |
| Clone Name: | OTI3E6 |
| Applications: | FC, IHC, WB |
| Recommended Dilution: | WB 1:2000, IHC 1:150, FLOW 1:100 |
| Reactivity: | Human, Mouse, Rat |
| Host: | Mouse |
| Isotype: | IgG2a |
| Clonality: | Monoclonal |
| Immunogen: | Full length human recombinant protein of human UBE2J1(NP_057105) produced in HEK293T cell. |
| Formulation: | PBS (pH 7.3) containing 1% BSA, 50% glycerol and 0.02% sodium azide. |
| Concentration: | 1 mg/ml |
| Purification: | Purified from mouse ascites fluids or tissue culture supernatant by affinity chromatography (protein A/G) |
| Conjugation: | Unconjugated |
| Storage: | Store at -20°C as received. |
| Stability: | Stable for 12 months from date of receipt. |
| Predicted Protein Size: | 35 kDa |
| Gene Name: | ubiquitin conjugating enzyme E2 J1 |
| Database Link: | NP_057105 Entrez Gene 56228 Mouse Entrez Gene 297961 Rat Entrez Gene 51465 Human Q9Y385 |



[View online »](#)

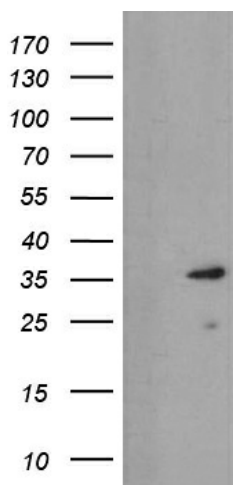
Background: The modification of proteins with ubiquitin is an important cellular mechanism for targeting abnormal or short-lived proteins for degradation. Ubiquitination involves at least three classes of enzymes: ubiquitin-activating enzymes, or E1s, ubiquitin-conjugating enzymes, or E2s, and ubiquitin-protein ligases, or E3s. This gene encodes a member of the E2 ubiquitin-conjugating enzyme family. This enzyme is located in the membrane of the endoplasmic reticulum (ER) and may contribute to quality control ER-associated degradation by the ubiquitin-proteasome system. [provided by RefSeq]. COMPLETENESS: complete on the 3' end.

Synonyms: CGI-76; HSPC153; HSPC205; HSU93243; NCUBE-1; NCUBE1; UBC6; UBC6E; Ubc6p

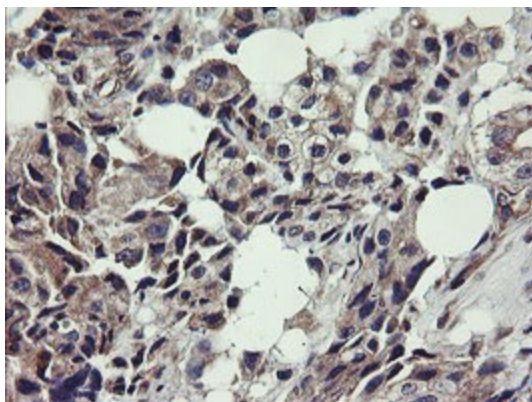
Protein Families: Transmembrane

Protein Pathways: Parkinson's disease, Ubiquitin mediated proteolysis

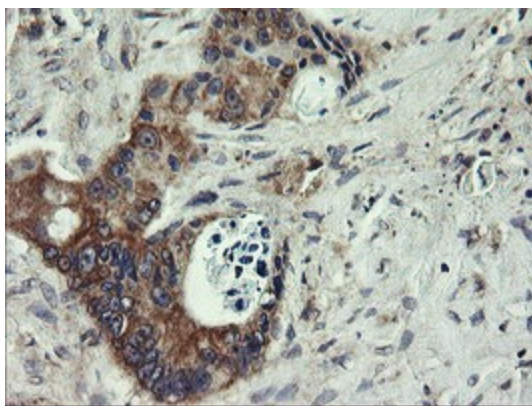
Product images:



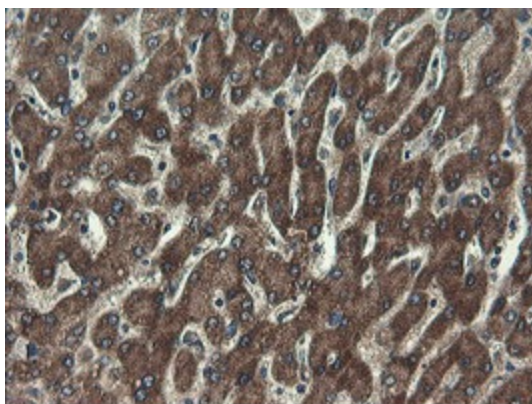
HEK293T cells were transfected with the pCMV6-ENTRY control (Left lane) or pCMV6-ENTRY UBE2J1 ([RC202826], Right lane) cDNA for 48 hrs and lysed. Equivalent amounts of cell lysates (5 ug per lane) were separated by SDS-PAGE and immunoblotted with anti-UBE2J1. Positive lysates [LY414230] (100ug) and [LC414230] (20ug) can be purchased separately from OriGene.



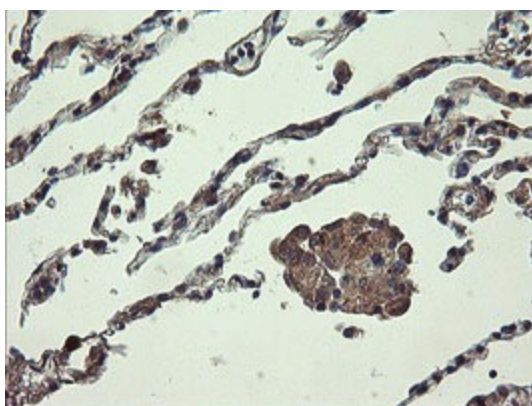
Immunohistochemical staining of paraffin-embedded Adenocarcinoma of Human breast tissue using anti-UBE2J1 mouse monoclonal antibody. (Heat-induced epitope retrieval by 10mM citric buffer, pH6.0, 100°C for 10min, [TA504970])



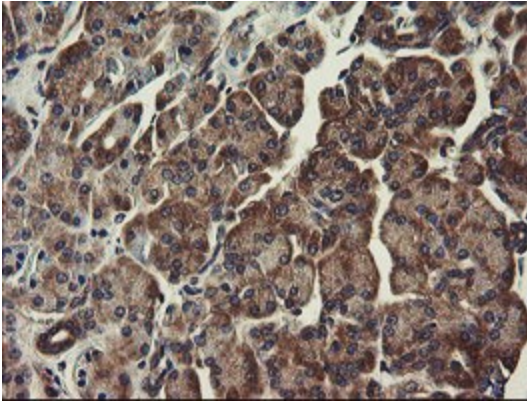
Immunohistochemical staining of paraffin-embedded Adenocarcinoma of Human colon tissue using anti-UBE2J1 mouse monoclonal antibody. (Heat-induced epitope retrieval by 10mM citric buffer, pH6.0, 100°C for 10min, [TA504970])



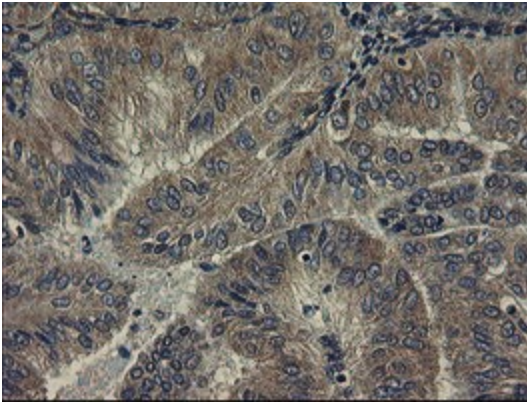
Immunohistochemical staining of paraffin-embedded Human liver tissue within the normal limits using anti-UBE2J1 mouse monoclonal antibody. (Heat-induced epitope retrieval by 10mM citric buffer, pH6.0, 100°C for 10min, [TA504970])



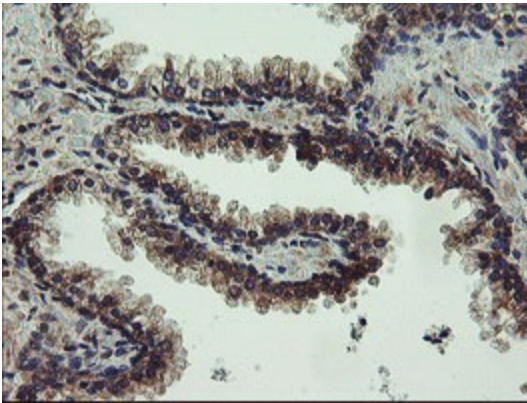
Immunohistochemical staining of paraffin-embedded Human lung tissue within the normal limits using anti-UBE2J1 mouse monoclonal antibody. (Heat-induced epitope retrieval by 10mM citric buffer, pH6.0, 100°C for 10min, [TA504970])



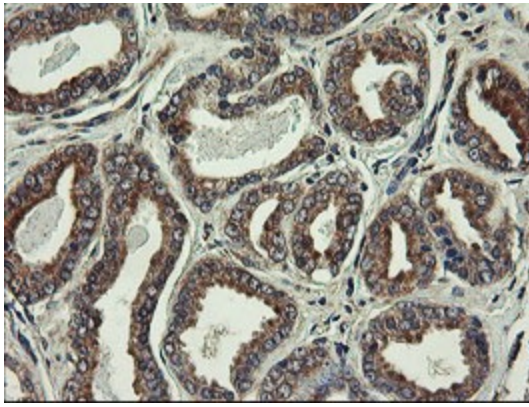
Immunohistochemical staining of paraffin-embedded Human pancreas tissue within the normal limits using anti-UBE2J1 mouse monoclonal antibody. (Heat-induced epitope retrieval by 10mM citric buffer, pH6.0, 100°C for 10min, [TA504970])



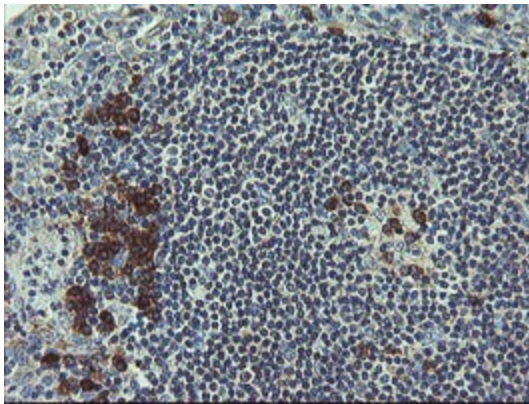
Immunohistochemical staining of paraffin-embedded Adenocarcinoma of Human endometrium tissue using anti-UBE2J1 mouse monoclonal antibody. (Heat-induced epitope retrieval by 10mM citric buffer, pH6.0, 100°C for 10min, [TA504970])



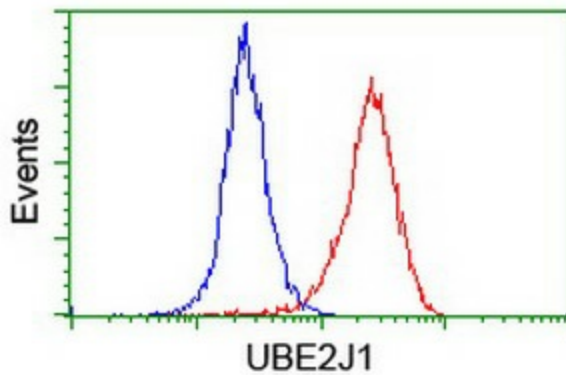
Immunohistochemical staining of paraffin-embedded Human prostate tissue within the normal limits using anti-UBE2J1 mouse monoclonal antibody. (Heat-induced epitope retrieval by 10mM citric buffer, pH6.0, 100°C for 10min, [TA504970])



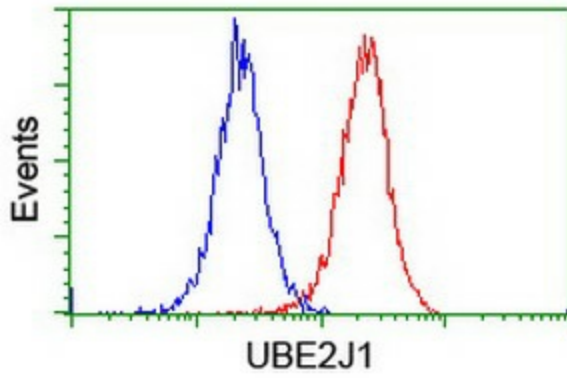
Immunohistochemical staining of paraffin-embedded Carcinoma of Human prostate tissue using anti-UBE2J1 mouse monoclonal antibody. (Heat-induced epitope retrieval by 10mM citric buffer, pH6.0, 100°C for 10min, [TA504970])



Immunohistochemical staining of paraffin-embedded Human tonsil within the normal limits using anti-UBE2J1 mouse monoclonal antibody. (Heat-induced epitope retrieval by 10mM citric buffer, pH6.0, 100°C for 10min, [TA504970])



Flow cytometric Analysis of HeLa cells, using anti-UBE2J1 antibody ([TA504970]), (Red), compared to a nonspecific negative control antibody, (Blue).



Flow cytometric Analysis of Jurkat cells, using anti-UBE2J1 antibody ([TA504970]), (Red), compared to a nonspecific negative control antibody, (Blue).