

## Product datasheet for **TA504867BM**

### SENP2 Mouse Monoclonal Antibody (HRP conjugated) [Clone ID: OTI4B3]

#### Product data:

Product Type:	Primary Antibodies
Clone Name:	OTI4B3
Applications:	IF, WB
Recommended Dilution:	WB 1:2000, IF 1:100
Reactivity:	Human, Dog, Rat, Monkey, Mouse
Host:	Mouse
Isotype:	IgG1
Clonality:	Monoclonal
Immunogen:	Human recombinant protein fragment corresponding to amino acids SENP2(NP_067640) produced in E.coli.
Formulation:	PBS (pH 7.3) containing 1% BSA, 50% glycerol.
Concentration:	0.5 mg/ml
Purification:	Purified from mouse ascites fluids or tissue culture supernatant by affinity chromatography (protein A/G)
Conjugation:	HRP
Storage:	Store at -20°C as received.
Stability:	Stable for 12 months from date of receipt.
Gene Name:	SUMO specific peptidase 2
Database Link:	<a href="#">NP_067640</a> <a href="#">Entrez Gene 75826 Mouse</a> <a href="#">Entrez Gene 78973 Rat</a> <a href="#">Entrez Gene 478661 Dog</a> <a href="#">Entrez Gene 700717 Monkey</a> <a href="#">Entrez Gene 59343 Human</a> <a href="#">Q9HC62</a>
Background:	SUMO1 (UBL1; MIM 601912) is a small ubiquitin-like protein that can be covalently conjugated to other proteins. SENP2 is one of a group of enzymes that process newly synthesized SUMO1 into the conjugatable form and catalyze the deconjugation of SUMO1-containing species. [supplied by OMIM, Apr 2004]
Synonyms:	AXAM2; SMT3IP2

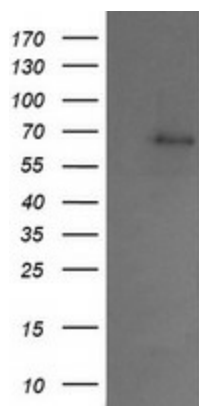


[View online »](#)

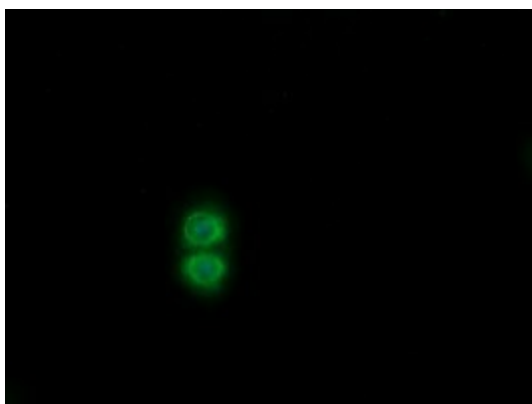
Protein Families: Druggable Genome, Protease

Protein Pathways: Wnt signaling pathway

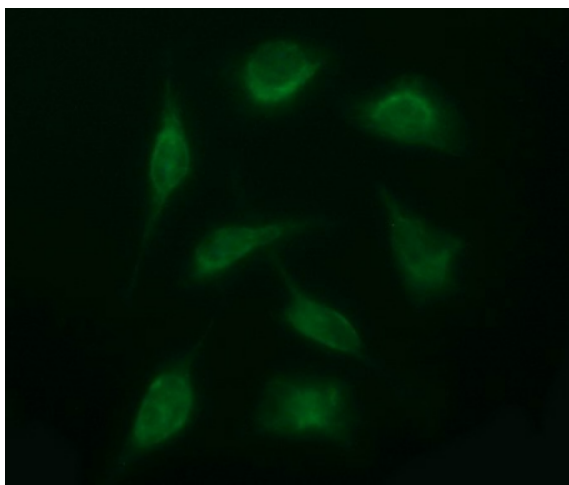
### Product images:



HEK293T cells were transfected with the pCMV6-ENTRY control (Left lane) or pCMV6-ENTRY SENP2 ([RC208109], Right lane) cDNA for 48 hrs and lysed. Equivalent amounts of cell lysates (5 ug per lane) were separated by SDS-PAGE and immunoblotted with anti-SENP2.



Anti-SENP2 mouse monoclonal antibody ([TA504867]) immunofluorescent staining of COS7 cells transiently transfected by pCMV6-ENTRY SENP2 ([RC208109]).



Immunofluorescent staining of HeLa cells using anti-SENP2 mouse monoclonal antibody ([TA504867]).