

Product datasheet for **TA504813AM**

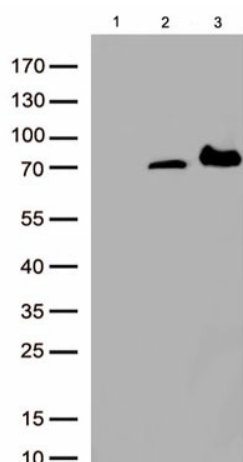
PADI4 Mouse Monoclonal Antibody (Biotin conjugated) [Clone ID: OTI4H5]

Product data:

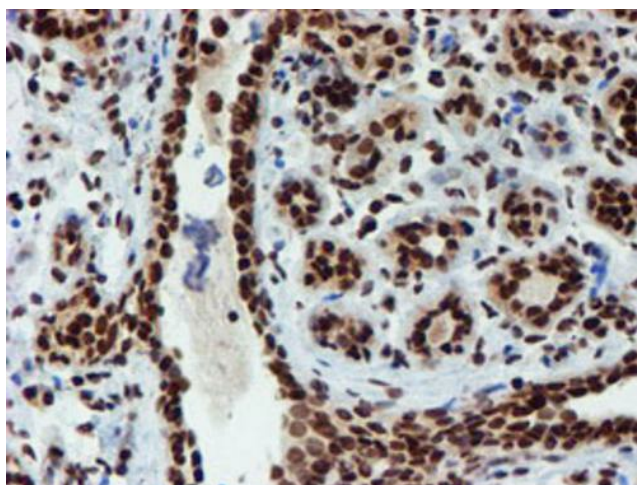
| | |
|--------------------------------|--|
| Product Type: | Primary Antibodies |
| Clone Name: | OTI4H5 |
| Applications: | FC, IF, IHC, WB |
| Recommended Dilution: | WB 1:2000, IHC 1:150, IF 1:100, FLOW 1:100 |
| Reactivity: | Human, Mouse, Rat |
| Host: | Mouse |
| Isotype: | IgG2a |
| Clonality: | Monoclonal |
| Immunogen: | Full length human recombinant protein of human PADI4(NP_036519) produced in HEK293T cell. |
| Formulation: | PBS (pH 7.3) containing 1% BSA, 50% glycerol and 0.02% sodium azide. |
| Concentration: | 0.5 mg/ml |
| Purification: | Purified from mouse ascites fluids or tissue culture supernatant by affinity chromatography (protein A/G) |
| Conjugation: | Biotin |
| Storage: | Store at -20°C as received. |
| Stability: | Stable for 12 months from date of receipt. |
| Predicted Protein Size: | 73.9 kDa |
| Gene Name: | peptidyl arginine deiminase 4 |
| Database Link: | NP_036519 Entrez Gene 18602 Mouse Entrez Gene 29512 Rat Entrez Gene 23569 Human Q9UM07 |
| Background: | This gene is a member of a gene family which encodes enzymes responsible for the conversion of arginine residues to citrulline residues. This gene may play a role in granulocyte and macrophage development leading to inflammation and immune response. [provided by RefSeq] |
| Synonyms: | PAD; PAD4; PADI5; PDI4; PDI5 |



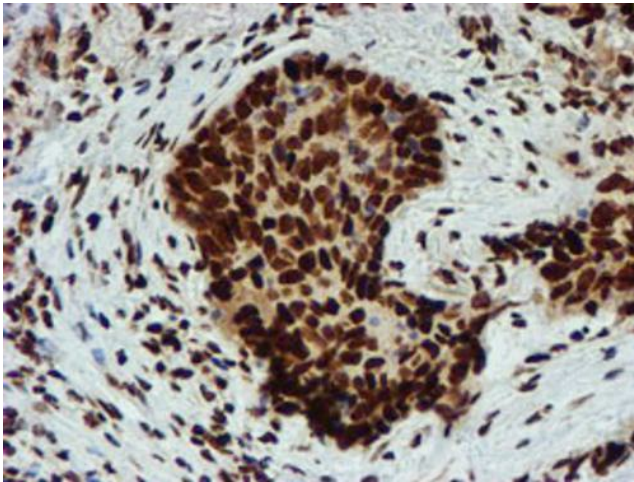
[View online »](#)

Product images:

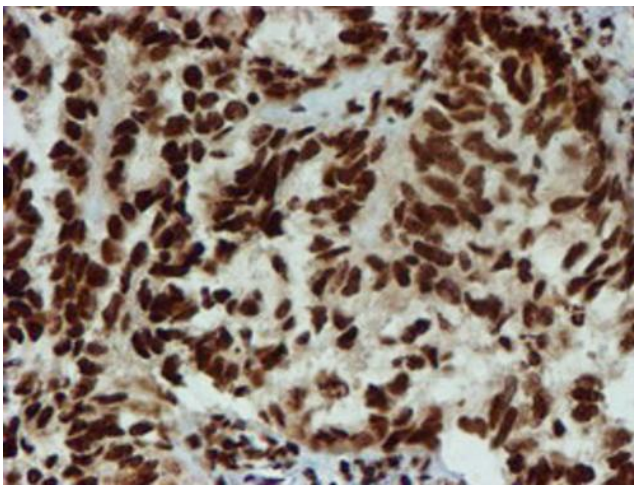
Western blot analysis of overexpressed lysates (15 µg per lane) from HEK293T cells transfected with empty plasmid ([PS100001], lane 1), human PADI4 plasmid ([RC206501], lane 2), mouse ALOX15 plasmid ([MR216758], lane 3) using anti-ALOX15 antibody [TA504813] (1:500).



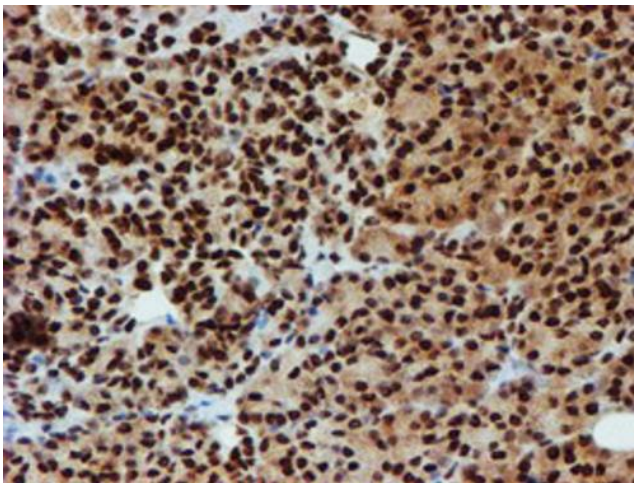
Immunohistochemical staining of paraffin-embedded human breast tissue within the normal limits using anti-PADI4 mouse monoclonal antibody. (Heat-induced epitope retrieval by 10 mM citric buffer, pH 6.0, 100°C for 10 min, [TA504813]).



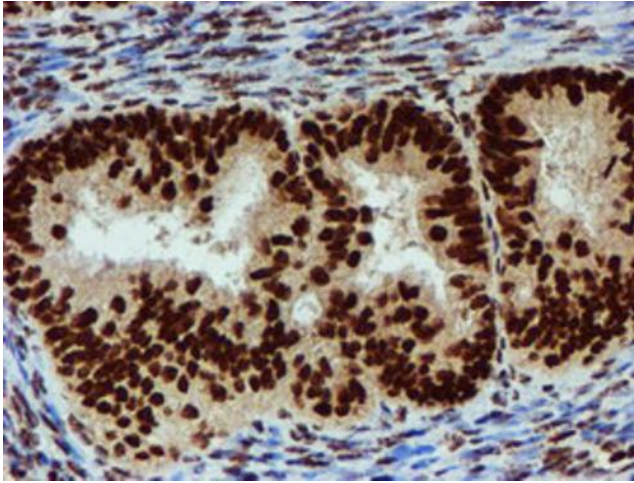
Immunohistochemical staining of paraffin-embedded Carcinoma of Human lung tissue using anti-PADI4 mouse monoclonal antibody. (Heat-induced epitope retrieval by 10mM citric buffer, pH6.0, 100°C for 10min, [TA504813]).



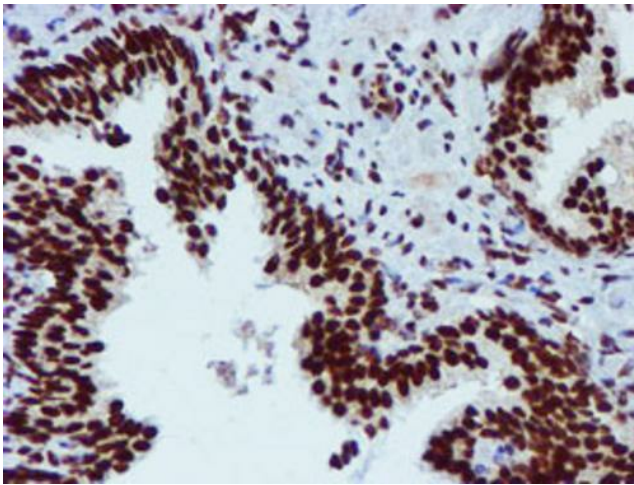
Immunohistochemical staining of paraffin-embedded Adenocarcinoma of Human ovary tissue using anti-PADI4 mouse monoclonal antibody. (Heat-induced epitope retrieval by 10mM citric buffer, pH6.0, 100°C for 10min, [TA504813]).



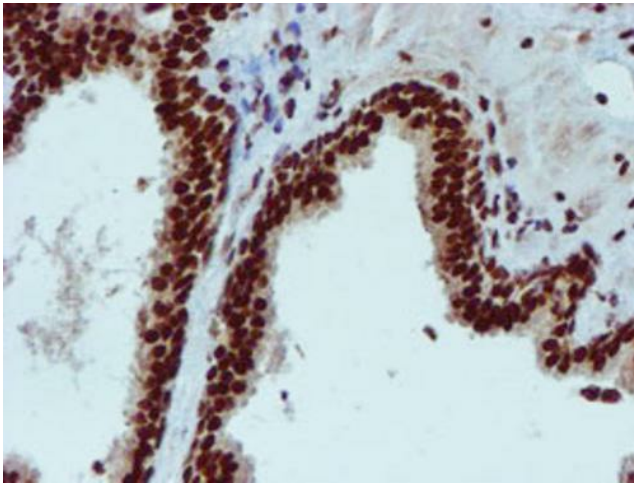
Immunohistochemical staining of paraffin-embedded Human pancreas tissue within the normal limits using anti-PADI4 mouse monoclonal antibody. (Heat-induced epitope retrieval by 10mM citric buffer, pH6.0, 100°C for 10min, [TA504813]).



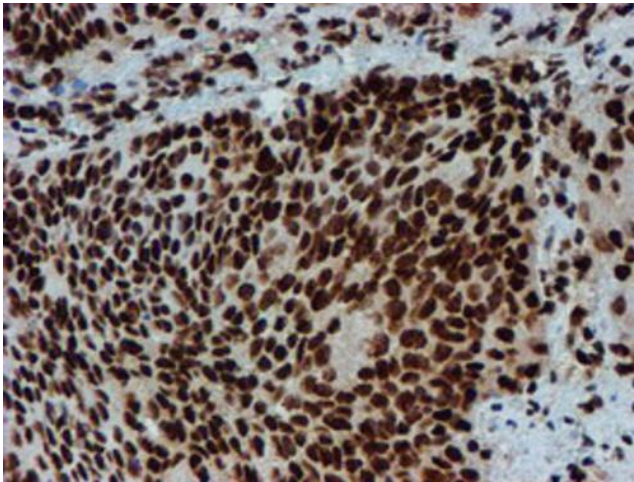
Immunohistochemical staining of paraffin-embedded Adenocarcinoma of Human endometrium tissue using anti-PADI4 mouse monoclonal antibody. (Heat-induced epitope retrieval by 10mM citric buffer, pH6.0, 100°C for 10min, [TA504813]).



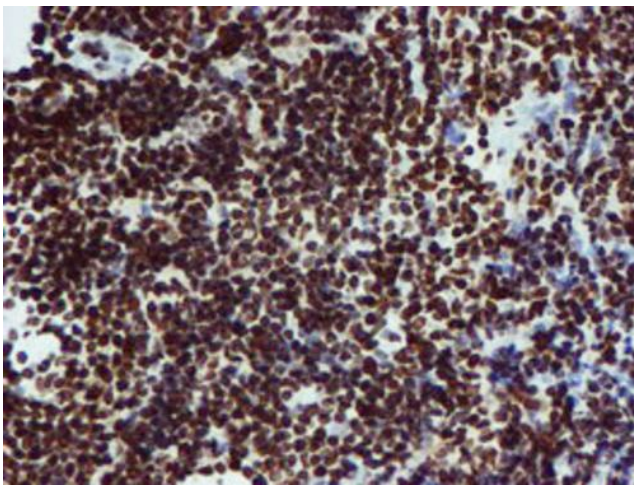
Immunohistochemical staining of paraffin-embedded Human prostate tissue within the normal limits using anti-PADI4 mouse monoclonal antibody. (Heat-induced epitope retrieval by 10mM citric buffer, pH6.0, 100°C for 10min, [TA504813]).



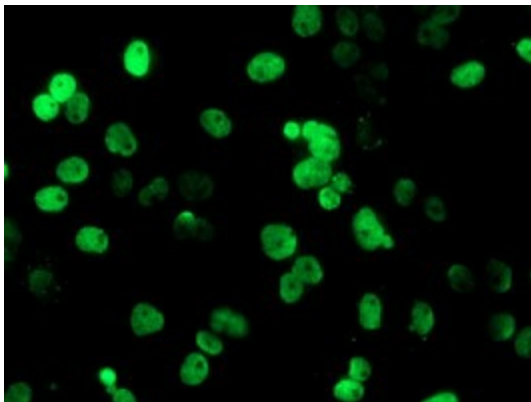
Immunohistochemical staining of paraffin-embedded Carcinoma of Human prostate tissue using anti-PADI4 mouse monoclonal antibody. (Heat-induced epitope retrieval by 10mM citric buffer, pH6.0, 100°C for 10min, [TA504813]).



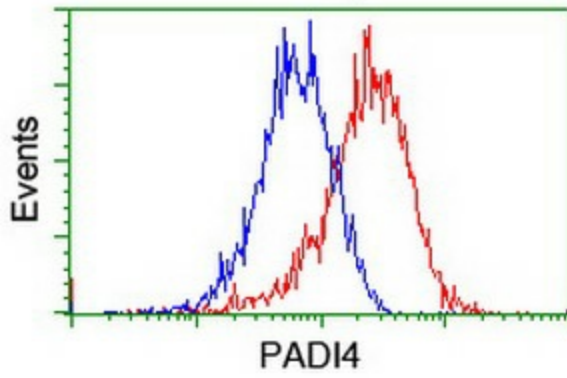
Immunohistochemical staining of paraffin-embedded Carcinoma of Human bladder tissue using anti-PADI4 mouse monoclonal antibody. (Heat-induced epitope retrieval by 10mM citric buffer, pH6.0, 100°C for 10min, [TA504813]).



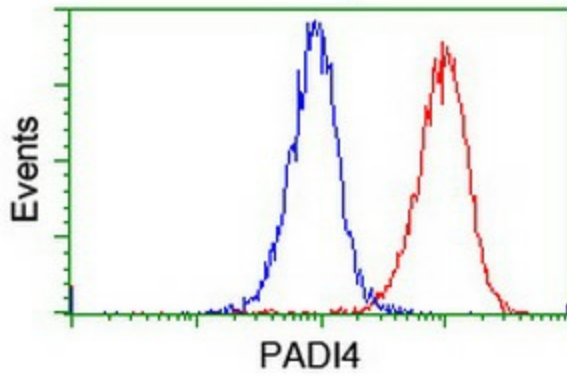
Immunohistochemical staining of paraffin-embedded Human lymphoma tissue using anti-PADI4 mouse monoclonal antibody. (Heat-induced epitope retrieval by 10mM citric buffer, pH6.0, 100°C for 10min, [TA504813]).



Anti-PADI4 mouse monoclonal antibody ([TA504813]) immunofluorescent staining of COS7 cells transiently transfected by pCMV6-ENTRY PADI4 ([RC206501]).



Flow cytometric Analysis of HeLa cells, using anti-PADI4 antibody ([TA504813]), (Red), compared to a nonspecific negative control antibody, (Blue).



Flow cytometric Analysis of Jurkat cells, using anti-PADI4 antibody ([TA504813]), (Red), compared to a nonspecific negative control antibody, (Blue).