

Product datasheet for **TA504777**

NONO Mouse Monoclonal Antibody [Clone ID: OTI4D9]

Product data:

Product Type:	Primary Antibodies
Clone Name:	OTI4D9
Applications:	FC, IF, IHC, WB
Recommended Dilution:	WB 1:500~2000, IHC 1:150, IF 1:100, FLOW 1:100
Reactivity:	Human, Dog, Rat, Monkey, Mouse
Host:	Mouse
Isotype:	IgG1
Clonality:	Monoclonal
Immunogen:	Human recombinant protein fragment corresponding to amino acids 184-385 of human NONO(NP_031389) produced in E.coli.
Formulation:	PBS (pH 7.3) containing 1% BSA, 50% glycerol and 0.02% sodium azide.
Concentration:	0.82 mg/ml
Purification:	Purified from mouse ascites fluids or tissue culture supernatant by affinity chromatography (protein A/G)
Conjugation:	Unconjugated
Storage:	Store at -20°C as received.
Stability:	Stable for 12 months from date of receipt.
Predicted Protein Size:	54.1 kDa
Gene Name:	non-POU domain containing octamer binding
Database Link:	NP_031389 Entrez Gene 53610 Mouse Entrez Gene 317259 Rat Entrez Gene 612773 Dog Entrez Gene 697263 Monkey Entrez Gene 4841 Human Q15233
Background:	This gene encodes an RNA-binding protein which plays various roles in the nucleus, including transcriptional regulation and RNA splicing. A rearrangement between this gene and the transcription factor E3 gene has been observed in papillary renal cell carcinoma. Alternatively spliced transcript variants have been described. Pseudogenes exist on Chromosomes 2 and 16. [provided by RefSeq]

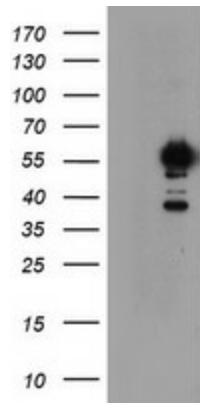


[View online »](#)

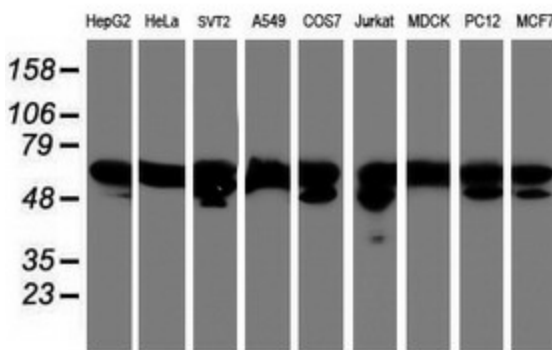
Synonyms: MRXS34; NMT55; NRB54; P54; P54NRB; PPP1R114

Protein Families: Druggable Genome, Transcription Factors

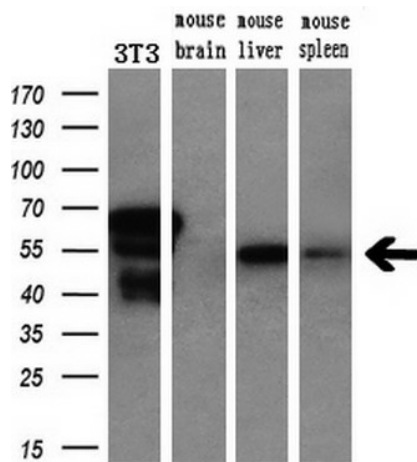
Product images:



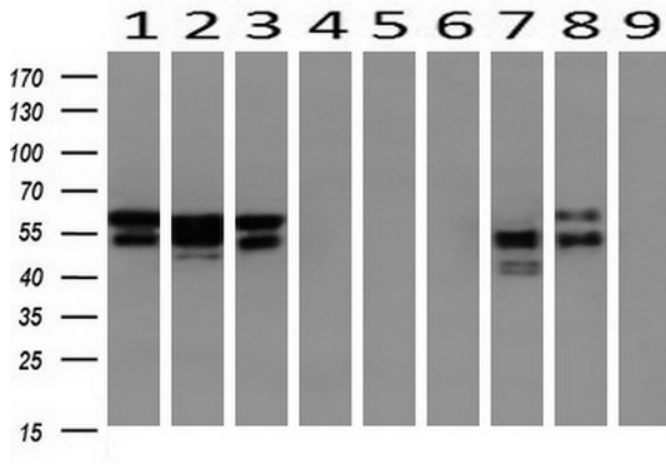
HEK293T cells were transfected with the pCMV6-ENTRY control (Cat# [PS100001], Left lane) or pCMV6-ENTRY NONO (Cat# [RC206688], Right lane) cDNA for 48 hrs and lysed. Equivalent amounts of cell lysates (5 ug per lane) were separated by SDS-PAGE and immunoblotted with anti-NONO(Cat# TA504777). Positive lysates [LY402135] (100ug) and [LC402135] (20ug) can be purchased separately from OriGene.



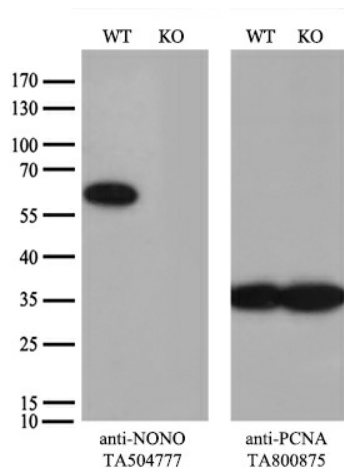
Western blot analysis of extracts (35ug) from 9 different cell lines by using anti-NONO monoclonal antibody (HepG2: human; HeLa: human; SVT2: mouse; A549: human; COS7: monkey; Jurkat: human; MDCK: canine; PC12: rat; MCF7: human).



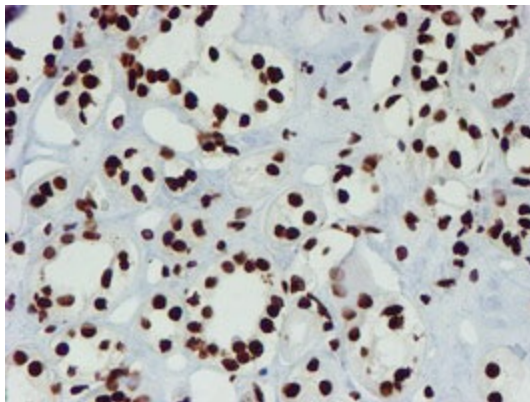
Western blot analysis of extracts (10ug) from a mouse cell line and 3 different mouse tissues by using anti-NONO monoclonal antibody (1:200).



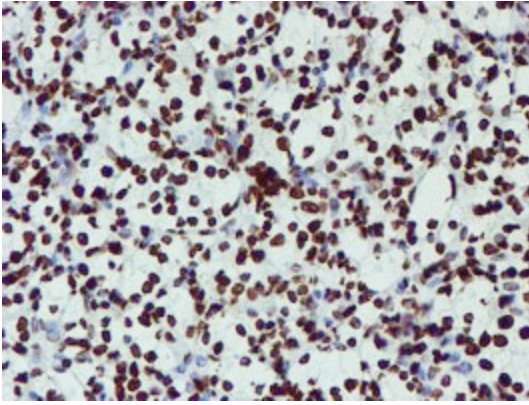
Western blot analysis of extracts (10ug) from 9 Human tissue by using anti-NONO monoclonal antibody at 1:200 (1: Testis; 2: Omentum; 3: Uterus; 4: Breast; 5: Brain; 6: Liver; 7: Ovary; 8: Thyroid gland; 9: Colon).



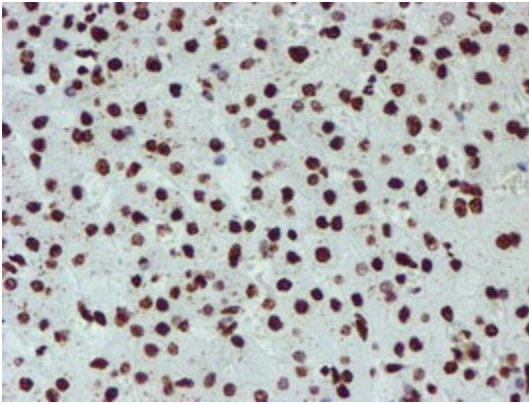
Equivalent amounts of cell lysates (10 ug per lane) of wild-type HEK293T cells (WT, Cat# LC810293T) and NONO-Knockout HEK293T cells (KO, Cat# [LC841199]) were separated by SDS-PAGE and immunoblotted with anti-NONO monoclonal antibody TA504777 (1:500). Then the blotted membrane was stripped and reprobed with anti-PCNA antibody as a loading control.



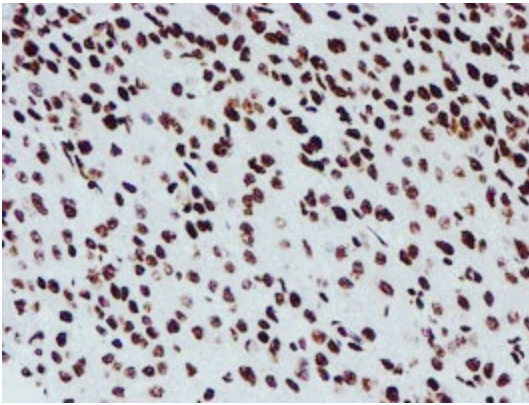
Immunohistochemical staining of paraffin-embedded Human Kidney tissue within the normal limits using anti-NONO mouse monoclonal antibody. (Heat-induced epitope retrieval by 10mM citric buffer, pH6.0, 100°C for 10min, TA504777)



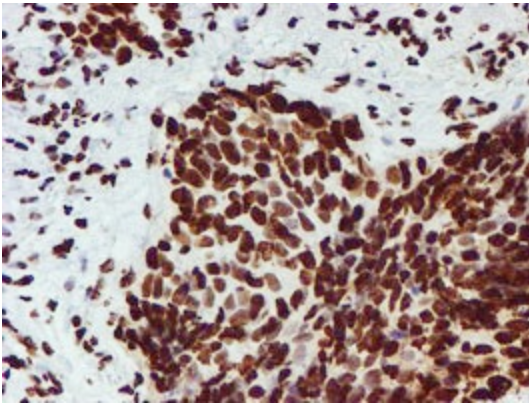
Immunohistochemical staining of paraffin-embedded Carcinoma of Human kidney tissue using anti-NONO mouse monoclonal antibody. (Heat-induced epitope retrieval by 10mM citric buffer, pH6.0, 100°C for 10min, TA504777)



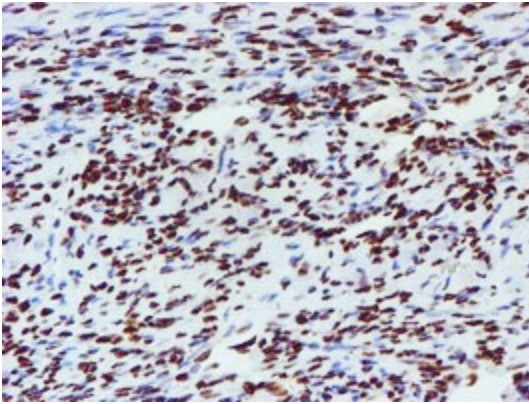
Immunohistochemical staining of paraffin-embedded Human liver tissue within the normal limits using anti-NONO mouse monoclonal antibody. (Heat-induced epitope retrieval by 10mM citric buffer, pH6.0, 100°C for 10min, TA504777)



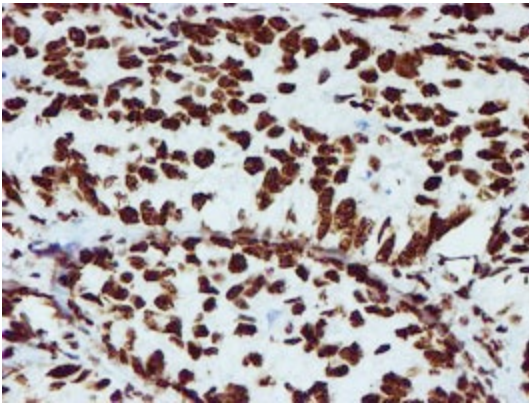
Immunohistochemical staining of paraffin-embedded Carcinoma of Human liver tissue using anti-NONO mouse monoclonal antibody. (Heat-induced epitope retrieval by 10mM citric buffer, pH6.0, 100°C for 10min, TA504777)



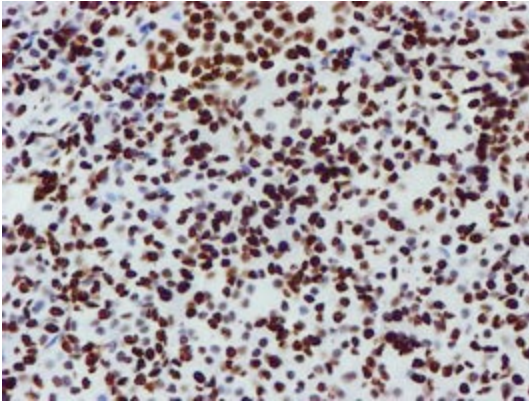
Immunohistochemical staining of paraffin-embedded Carcinoma of Human lung tissue using anti-NONO mouse monoclonal antibody. (Heat-induced epitope retrieval by 10mM citric buffer, pH6.0, 100°C for 10min, TA504777)



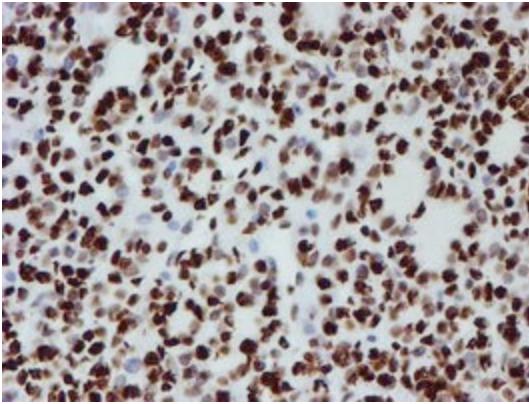
Immunohistochemical staining of paraffin-embedded Human Ovary tissue within the normal limits using anti-NONO mouse monoclonal antibody. (Heat-induced epitope retrieval by 10mM citric buffer, pH6.0, 100°C for 10min, TA504777)



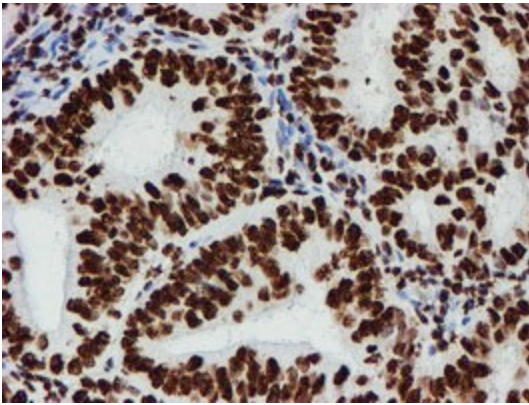
Immunohistochemical staining of paraffin-embedded Adenocarcinoma of Human ovary tissue using anti-NONO mouse monoclonal antibody. (Heat-induced epitope retrieval by 10mM citric buffer, pH6.0, 100°C for 10min, TA504777)



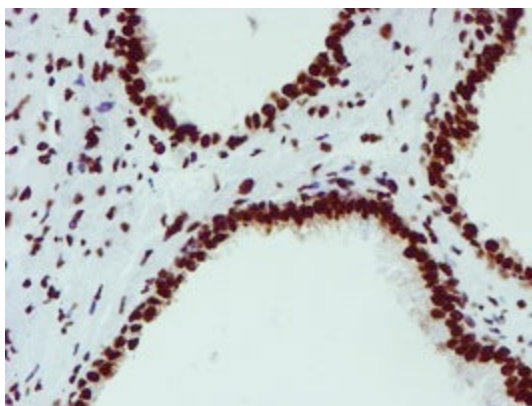
Immunohistochemical staining of paraffin-embedded Human pancreas tissue within the normal limits using anti-NONO mouse monoclonal antibody. (Heat-induced epitope retrieval by 10mM citric buffer, pH6.0, 100°C for 10min, TA504777)



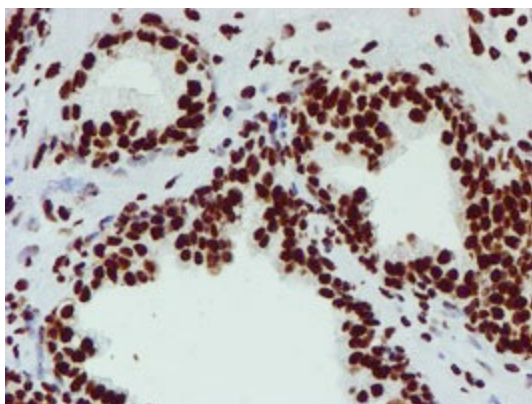
Immunohistochemical staining of paraffin-embedded Carcinoma of Human thyroid tissue using anti-NONO mouse monoclonal antibody. (Heat-induced epitope retrieval by 10mM citric buffer, pH6.0, 100°C for 10min, TA504777)



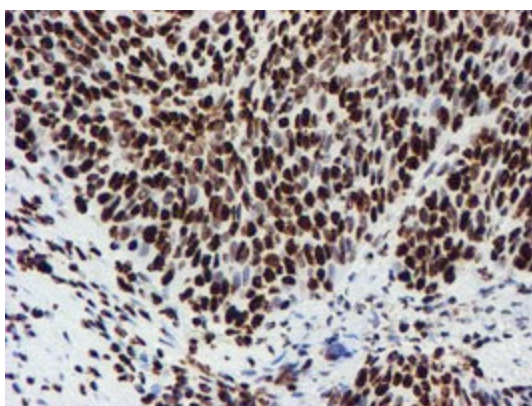
Immunohistochemical staining of paraffin-embedded Adenocarcinoma of Human endometrium tissue using anti-NONO mouse monoclonal antibody. (Heat-induced epitope retrieval by 10mM citric buffer, pH6.0, 100°C for 10min, TA504777)



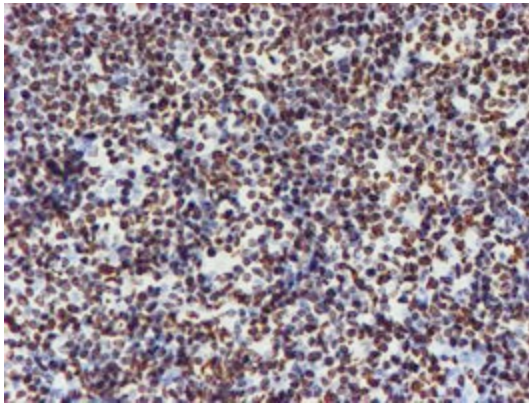
Immunohistochemical staining of paraffin-embedded Human prostate tissue within the normal limits using anti-NONO mouse monoclonal antibody. (Heat-induced epitope retrieval by 10mM citric buffer, pH6.0, 100°C for 10min, TA504777)



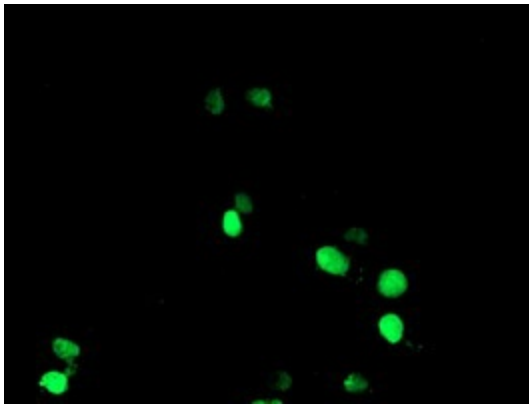
Immunohistochemical staining of paraffin-embedded Carcinoma of Human prostate tissue using anti-NONO mouse monoclonal antibody. (Heat-induced epitope retrieval by 10mM citric buffer, pH6.0, 100°C for 10min, TA504777)



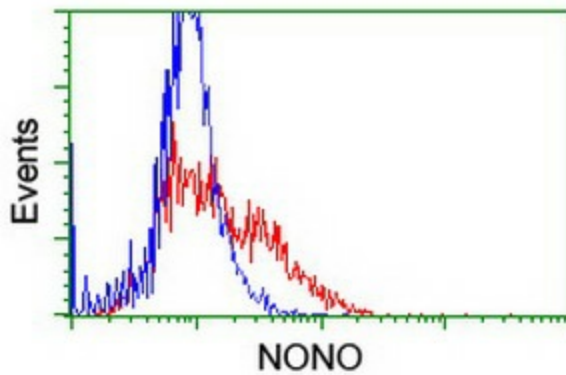
Immunohistochemical staining of paraffin-embedded Carcinoma of Human bladder tissue using anti-NONO mouse monoclonal antibody. (Heat-induced epitope retrieval by 10mM citric buffer, pH6.0, 100°C for 10min, TA504777)



Immunohistochemical staining of paraffin-embedded Human lymphoma tissue using anti-NONO mouse monoclonal antibody. (Heat-induced epitope retrieval by 10mM citric buffer, pH6.0, 100°C for 10min, TA504777)



Anti-NONO mouse monoclonal antibody (TA504777) immunofluorescent staining of COS7 cells transiently transfected by pCMV6-ENTRY NONO ([RC206688]).



HEK293T cells transfected with either [RC206688] overexpress plasmid (Red) or empty vector control plasmid (Blue) were immunostained by anti-NONO antibody (TA504777), and then analyzed by flow cytometry.