

Product datasheet for **TA504318**

APMAP Mouse Monoclonal Antibody [Clone ID: OT11A9]

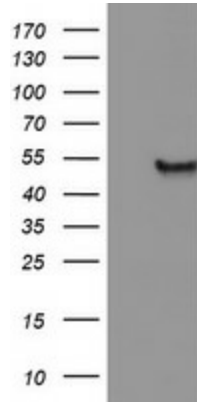
Product data:

Product Type:	Primary Antibodies
Clone Name:	OT11A9
Applications:	IHC, WB
Recommended Dilution:	WB 1:500~2000, IHC 1:150
Reactivity:	Human, Mouse, Rat
Host:	Mouse
Isotype:	IgG1
Clonality:	Monoclonal
Immunogen:	Full length human recombinant protein of human C20orf3(NP_065392) produced in HEK293T cell.
Formulation:	PBS (pH 7.3) containing 1% BSA, 50% glycerol and 0.02% sodium azide.
Concentration:	0.62 mg/ml
Purification:	Purified from mouse ascites fluids or tissue culture supernatant by affinity chromatography (protein A/G)
Conjugation:	Unconjugated
Storage:	Store at -20°C as received.
Stability:	Stable for 12 months from date of receipt.
Predicted Protein Size:	46.3 kDa
Gene Name:	adipocyte plasma membrane associated protein
Database Link:	NP_065392 Entrez Gene 71881 Mouse Entrez Gene 366227 Rat Entrez Gene 57136 Human Q9HDC9
Synonyms:	BSCv; C20orf3
Protein Families:	Transmembrane

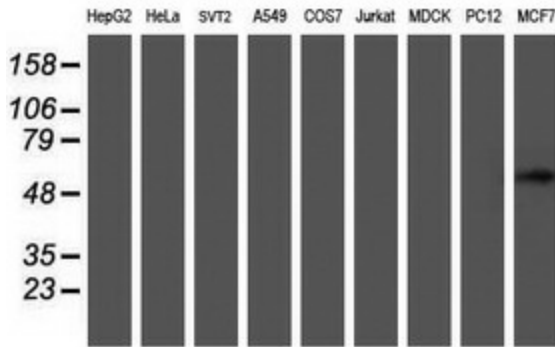


[View online »](#)

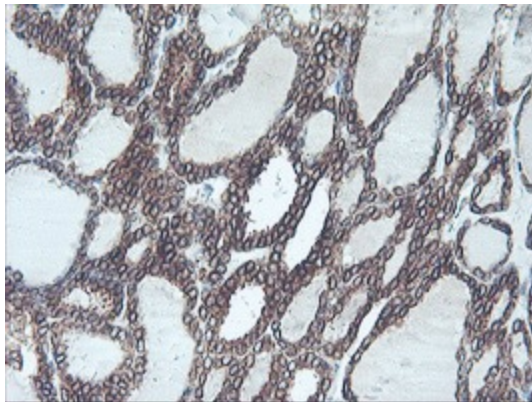
Product images:



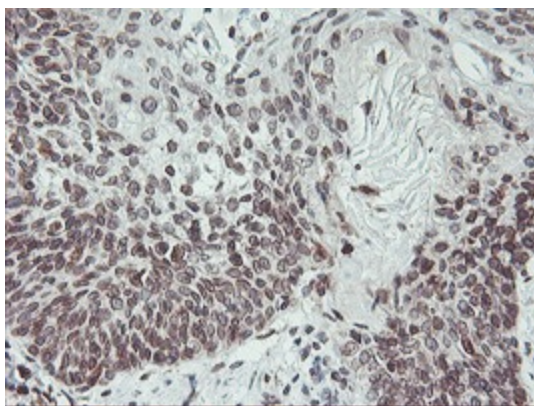
HEK293T cells were transfected with the pCMV6-ENTRY control (Left lane) or pCMV6-ENTRY C20orf3 ([RC202410], Right lane) cDNA for 48 hrs and lysed. Equivalent amounts of cell lysates (5 ug per lane) were separated by SDS-PAGE and immunoblotted with anti-C20orf3. Positive lysates [LY402795] (100ug) and [LC402795] (20ug) can be purchased separately from OriGene.



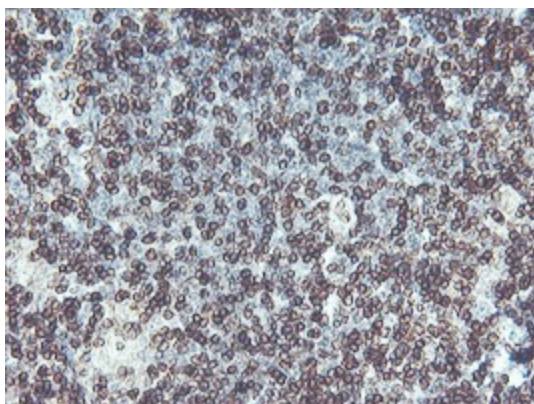
Western blot analysis of extracts (35ug) from 9 different cell lines by using anti-C20orf3 monoclonal antibody.



Immunohistochemical staining of paraffin-embedded Carcinoma of Human thyroid tissue using anti-C20orf3 mouse monoclonal antibody. (Heat-induced epitope retrieval by 10mM citric buffer, pH6.0, 100°C for 10min, TA504318)



Immunohistochemical staining of paraffin-embedded Carcinoma of Human bladder tissue using anti-C20orf3 mouse monoclonal antibody. (Heat-induced epitope retrieval by 10mM citric buffer, pH6.0, 100°C for 10min, TA504318)



Immunohistochemical staining of paraffin-embedded Human lymphoma tissue using anti-C20orf3 mouse monoclonal antibody. (Heat-induced epitope retrieval by 10mM citric buffer, pH6.0, 100°C for 10min, TA504318)