

## Product datasheet for **TA504239BM**

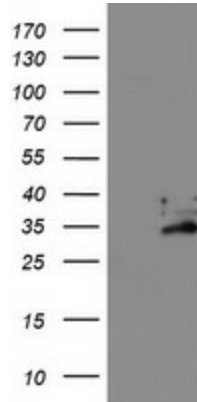
### EXOSC7 Mouse Monoclonal Antibody (HRP conjugated) [Clone ID: OTI1G8]

#### Product data:

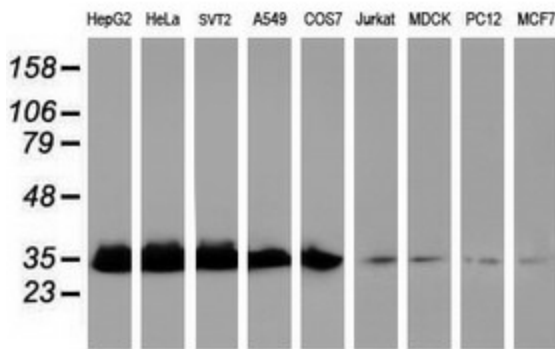
Product Type:	Primary Antibodies
Clone Name:	OTI1G8
Applications:	FC, IF, IHC, WB
Recommended Dilution:	WB 1:500~2000, IHC 1:150, IF 1:100, FLOW 1:100
Reactivity:	Human, Dog, Rat, Monkey, Mouse
Host:	Mouse
Isotype:	IgG1
Clonality:	Monoclonal
Immunogen:	Full length human recombinant protein of human EXOSC7(NP_055819) produced in HEK293T cell.
Formulation:	PBS (pH 7.3) containing 1% BSA, 50% glycerol.
Concentration:	0.5 mg/ml
Purification:	Purified from mouse ascites fluids or tissue culture supernatant by affinity chromatography (protein A/G)
Conjugation:	HRP
Storage:	Store at -20°C as received.
Stability:	Stable for 12 months from date of receipt.
Predicted Protein Size:	31.6 kDa
Gene Name:	exosome component 7
Database Link:	<a href="#">NP_055819</a> <a href="#">Entrez Gene 66446 Mouse</a> <a href="#">Entrez Gene 316098 Rat</a> <a href="#">Entrez Gene 476654 Dog</a> <a href="#">Entrez Gene 714624 Monkey</a> <a href="#">Entrez Gene 23016 Human</a> <a href="#">Q15024</a>
Synonyms:	EAP1; hRrp42p; p8; RRP42; Rrp42p
Protein Families:	Stem cell - Pluripotency
Protein Pathways:	RNA degradation



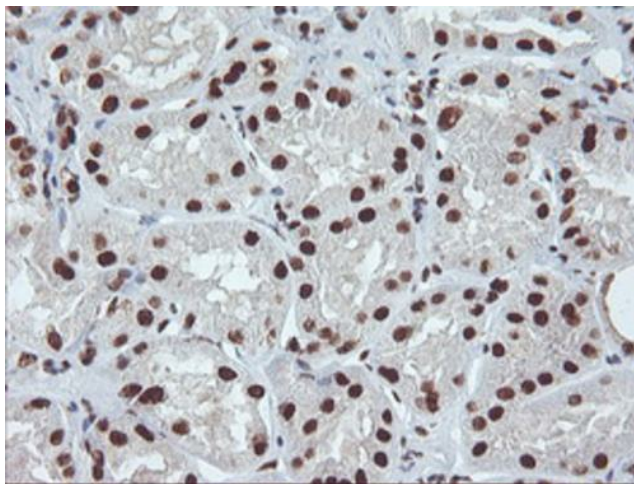
[View online »](#)

**Product images:**


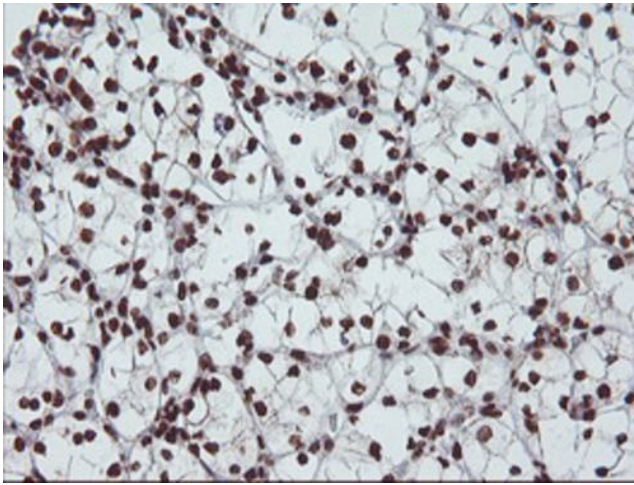
HEK293T cells were transfected with the pCMV6-ENTRY control (Cat# [PS100001], Left lane) or pCMV6-ENTRY EXOSC7 (Cat# [RC201419], Right lane) cDNA for 48 hrs and lysed. Equivalent amounts of cell lysates (5 ug per lane) were separated by SDS-PAGE and immunoblotted with anti-EXOSC7 (Cat# [TA504239]). Positive lysates [LY402399] (100ug) and [LC402399] (20ug) can be purchased separately from OriGene.



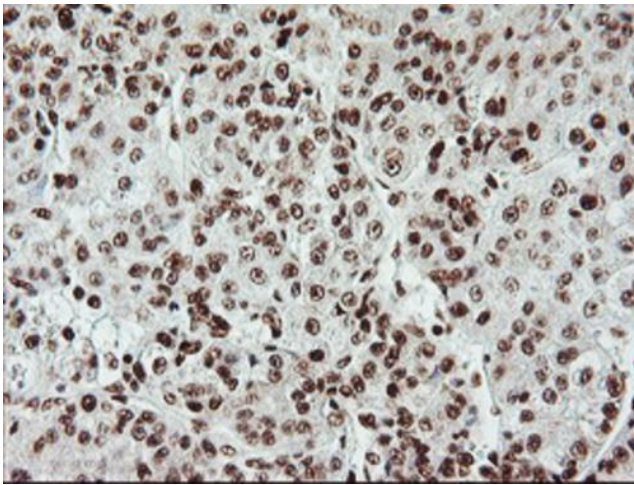
Western blot analysis of extracts (35ug) from 9 different cell lines by using anti-EXOSC7 monoclonal antibody (HepG2: human; HeLa: human; SVT2: mouse; A549: human; COS7: monkey; Jurkat: human; MDCK: canine; PC12: rat; MCF7: human).



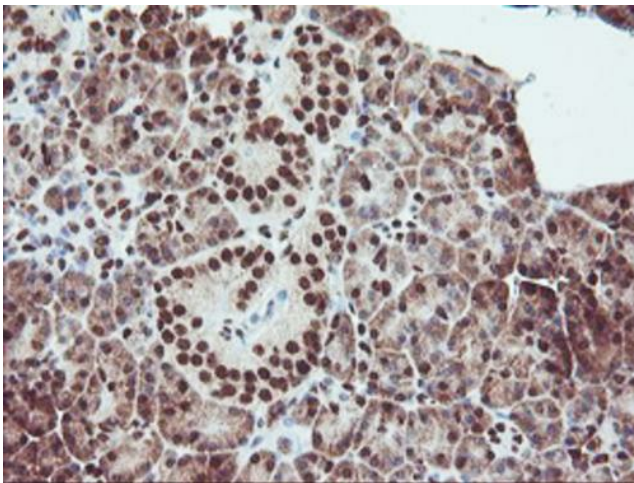
Immunohistochemical staining of paraffin-embedded Human Kidney tissue within the normal limits using anti-EXOSC7 mouse monoclonal antibody. (Heat-induced epitope retrieval by 10mM citric buffer, pH6.0, 100°C for 10min, [TA504239])



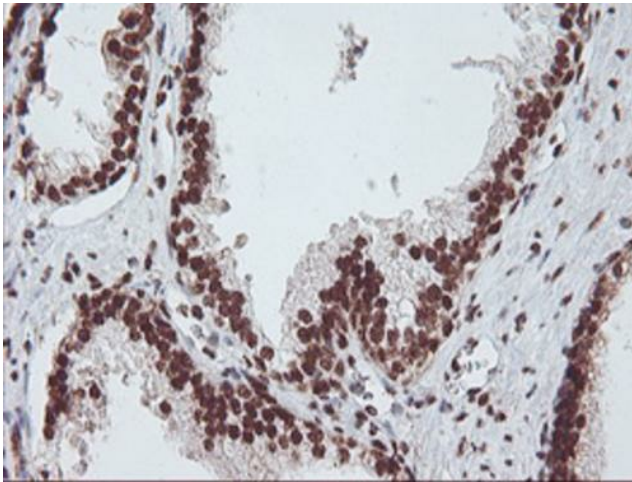
Immunohistochemical staining of paraffin-embedded Carcinoma of Human kidney tissue using anti-EXOSC7 mouse monoclonal antibody. (Heat-induced epitope retrieval by 10mM citric buffer, pH6.0, 100°C for 10min, [TA504239])



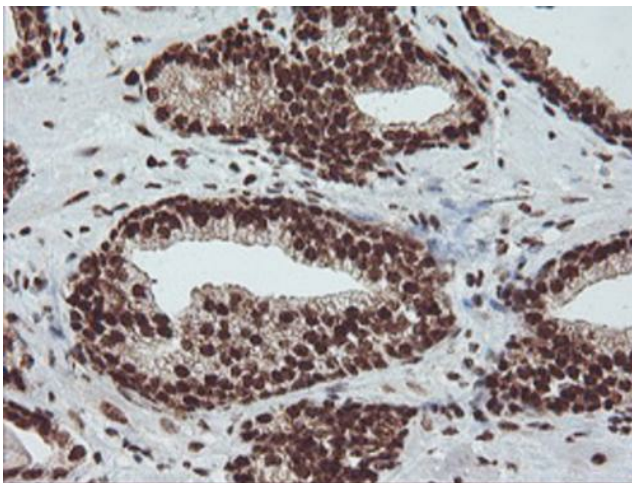
Immunohistochemical staining of paraffin-embedded Carcinoma of Human liver tissue using anti-EXOSC7 mouse monoclonal antibody. (Heat-induced epitope retrieval by 10mM citric buffer, pH6.0, 100°C for 10min, [TA504239])



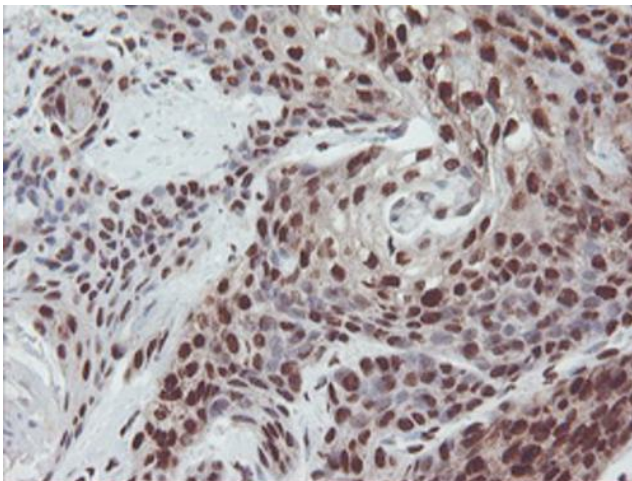
Immunohistochemical staining of paraffin-embedded Human pancreas tissue within the normal limits using anti-EXOSC7 mouse monoclonal antibody. (Heat-induced epitope retrieval by 10mM citric buffer, pH6.0, 100°C for 10min, [TA504239])



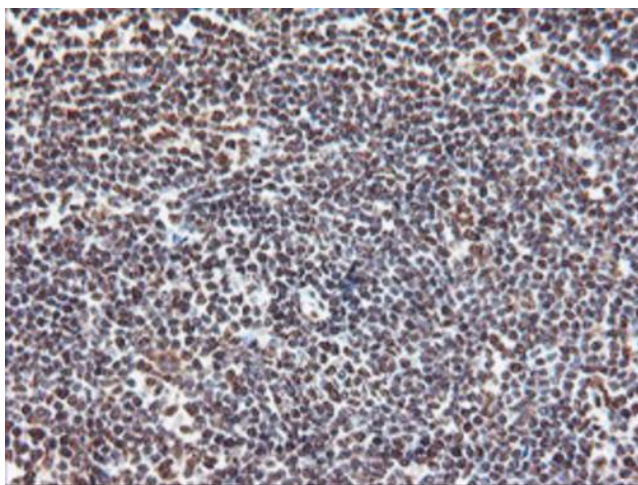
Immunohistochemical staining of paraffin-embedded Human prostate tissue within the normal limits using anti-EXOSC7 mouse monoclonal antibody. (Heat-induced epitope retrieval by 10mM citric buffer, pH6.0, 100°C for 10min, [TA504239])



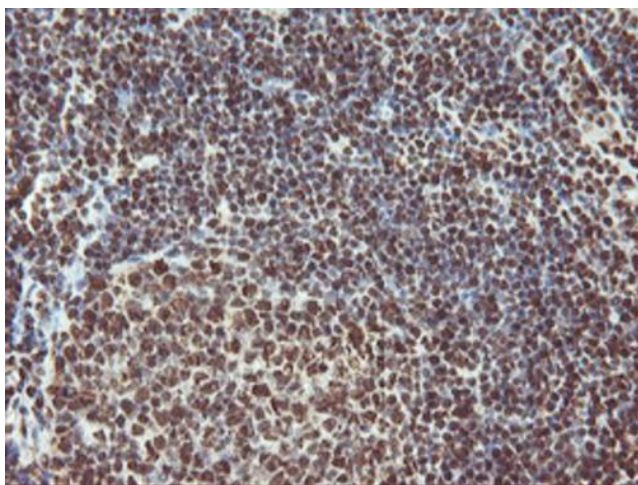
Immunohistochemical staining of paraffin-embedded Carcinoma of Human prostate tissue using anti-EXOSC7 mouse monoclonal antibody. (Heat-induced epitope retrieval by 10mM citric buffer, pH6.0, 100°C for 10min, [TA504239])



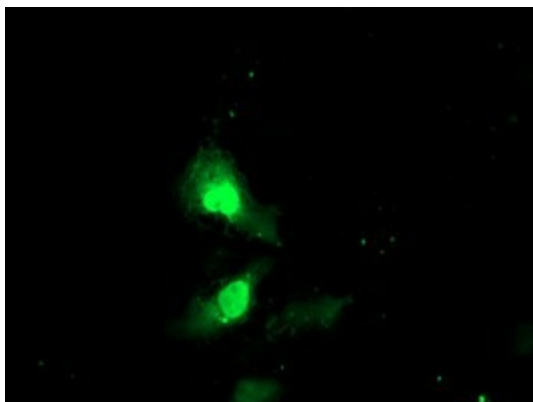
Immunohistochemical staining of paraffin-embedded Carcinoma of Human bladder tissue using anti-EXOSC7 mouse monoclonal antibody. (Heat-induced epitope retrieval by 10mM citric buffer, pH6.0, 100°C for 10min, [TA504239])



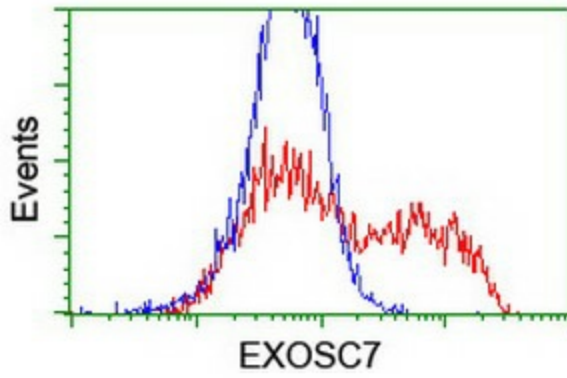
Immunohistochemical staining of paraffin-embedded Human lymphoma tissue using anti-EXOSC7 mouse monoclonal antibody. (Heat-induced epitope retrieval by 10mM citric buffer, pH6.0, 100°C for 10min, [TA504239])



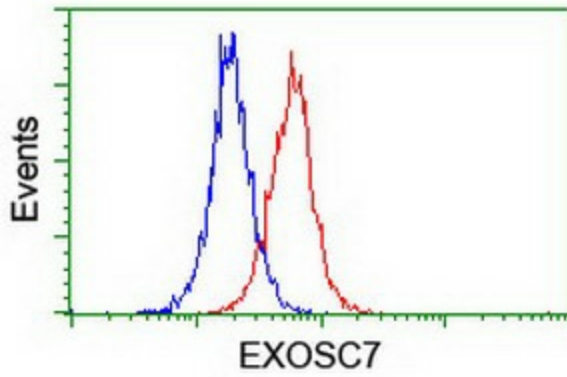
Immunohistochemical staining of paraffin-embedded Human tonsil within the normal limits using anti-EXOSC7 mouse monoclonal antibody. (Heat-induced epitope retrieval by 10mM citric buffer, pH6.0, 100°C for 10min, [TA504239])



Anti-EXOSC7 mouse monoclonal antibody ([TA504239]) immunofluorescent staining of COS7 cells transiently transfected by pCMV6-ENTRY EXOSC7 ([RC201419]).



HEK293T cells transfected with either [RC201419] overexpress plasmid (Red) or empty vector control plasmid (Blue) were immunostained by anti-EXOSC7 antibody ([TA504239]), and then analyzed by flow cytometry.



Flow cytometric Analysis of Jurkat cells, using anti-EXOSC7 antibody ([TA504239]), (Red), compared to a nonspecific negative control antibody, (Blue).