

Product datasheet for **TA504189**

Endo G (ENDOG) Mouse Monoclonal Antibody [Clone ID: OTI5F1]

Product data:

| | |
|-------------------------|--|
| Product Type: | Primary Antibodies |
| Clone Name: | OTI5F1 |
| Applications: | FC, IF, IHC, WB |
| Recommended Dilution: | WB 1:500~2000, IHC 1:150, IF 1:100, FLOW 1:100 |
| Reactivity: | Human, Mouse, Rat |
| Host: | Mouse |
| Isotype: | IgG1 |
| Clonality: | Monoclonal |
| Immunogen: | Full length human recombinant protein of human ENDOG(NP_004426) produced in HEK293T cell. |
| Formulation: | PBS (pH 7.3) containing 1% BSA, 50% glycerol and 0.02% sodium azide. |
| Concentration: | 1 mg/ml |
| Purification: | Purified from mouse ascites fluids or tissue culture supernatant by affinity chromatography (protein A/G) |
| Conjugation: | Unconjugated |
| Storage: | Store at -20°C as received. |
| Stability: | Stable for 12 months from date of receipt. |
| Predicted Protein Size: | 27.7 kDa |
| Gene Name: | endonuclease G |
| Database Link: | NP_004426 Entrez Gene 13804 Mouse Entrez Gene 362100 Rat Entrez Gene 2021 Human Q14249 |
| Background: | The protein encoded by this gene is a nuclear encoded endonuclease that is localized in the mitochondrion. The encoded protein is widely distributed among animals and cleaves DNA at GC tracts. This protein is capable of generating the RNA primers required by DNA polymerase gamma to initiate replication of mitochondrial DNA. [provided by RefSeq] |
| Synonyms: | FLJ27463 |

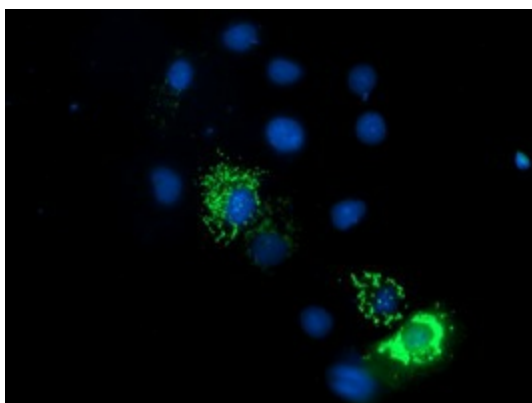


[View online »](#)

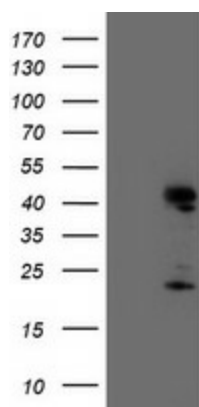
Protein Families: Druggable Genome

Protein Pathways: Apoptosis

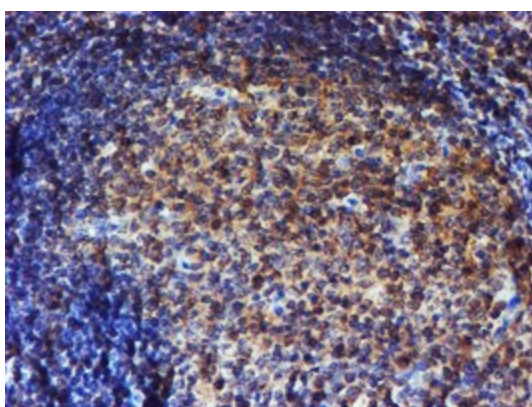
Product images:



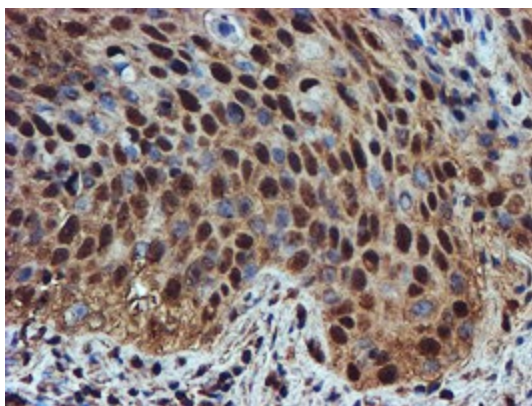
Anti-ENDOG mouse monoclonal antibody (TA504189) immunofluorescent staining of COS7 cells transiently transfected by pCMV6-ENTRY ENDOG ([RC205089]).



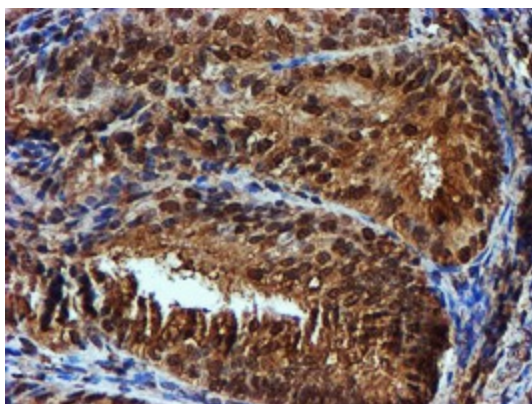
HEK293T cells were transfected with the pCMV6-ENTRY control (Cat# [PS100001], Left lane) or pCMV6-ENTRY ENDOG (Cat# [RC205089], Right lane) cDNA for 48 hrs and lysed. Equivalent amounts of cell lysates (5 ug per lane) were separated by SDS-PAGE and immunoblotted with anti-ENDOG(Cat# TA504189). Positive lysates [LY417987] (100ug) and [LC417987] (20ug) can be purchased separately from OriGene.



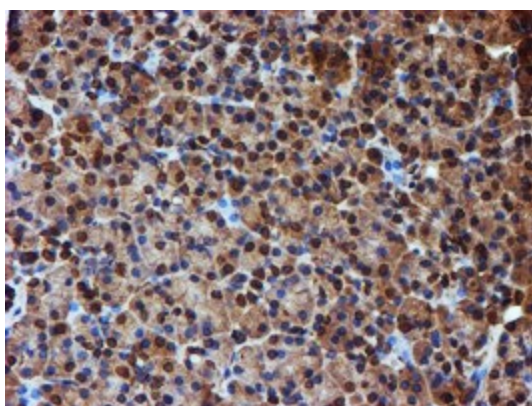
Immunohistochemical staining of paraffin-embedded Human tonsil within the normal limits using anti-ENDOG mouse monoclonal antibody. (Heat-induced epitope retrieval by 10mM citric buffer, pH6.0, 100°C for 10min, TA504189)



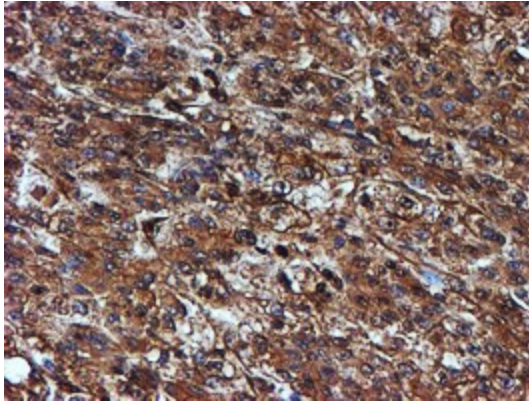
Immunohistochemical staining of paraffin-embedded Carcinoma of Human bladder tissue using anti-ENDOG mouse monoclonal antibody. (Heat-induced epitope retrieval by 10mM citric buffer, pH6.0, 100°C for 10min, TA504189)



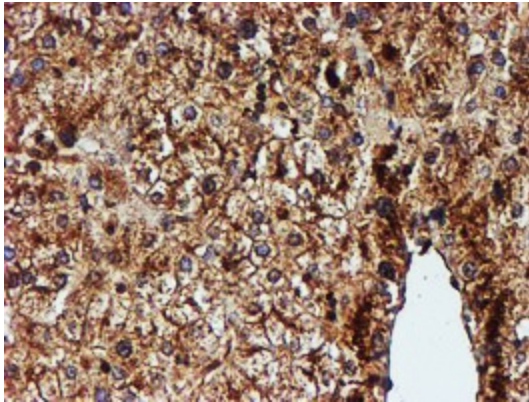
Immunohistochemical staining of paraffin-embedded Adenocarcinoma of Human endometrium tissue using anti-ENDOG mouse monoclonal antibody. (Heat-induced epitope retrieval by 10mM citric buffer, pH6.0, 100°C for 10min, TA504189)



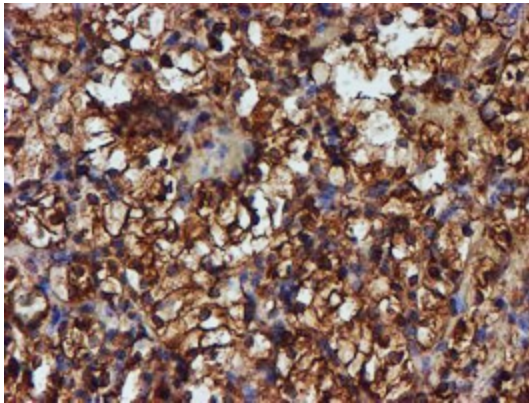
Immunohistochemical staining of paraffin-embedded Human pancreas tissue within the normal limits using anti-ENDOG mouse monoclonal antibody. (Heat-induced epitope retrieval by 10mM citric buffer, pH6.0, 100°C for 10min, TA504189)



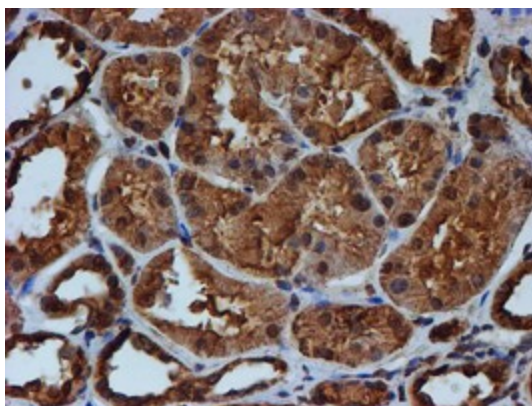
Immunohistochemical staining of paraffin-embedded Carcinoma of Human liver tissue using anti-ENDOG mouse monoclonal antibody. (Heat-induced epitope retrieval by 10mM citric buffer, pH6.0, 100°C for 10min, TA504189)



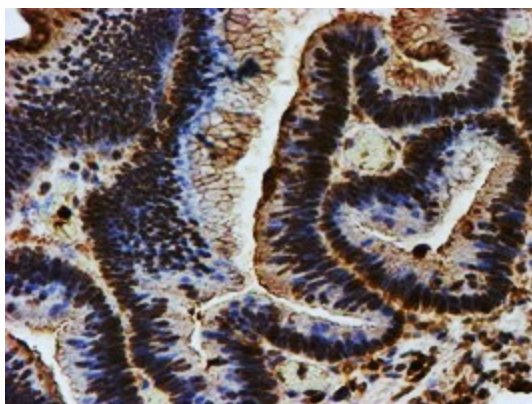
Immunohistochemical staining of paraffin-embedded Human liver tissue within the normal limits using anti-ENDOG mouse monoclonal antibody. (Heat-induced epitope retrieval by 10mM citric buffer, pH6.0, 100°C for 10min, TA504189)



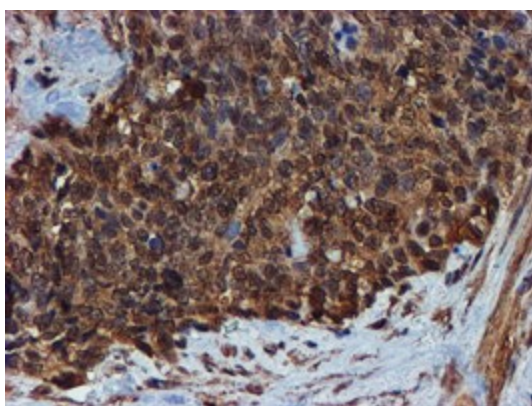
Immunohistochemical staining of paraffin-embedded Carcinoma of Human kidney tissue using anti-ENDOG mouse monoclonal antibody. (Heat-induced epitope retrieval by 10mM citric buffer, pH6.0, 100°C for 10min, TA504189)



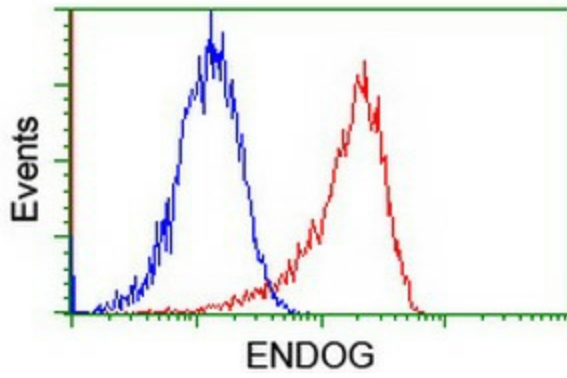
Immunohistochemical staining of paraffin-embedded Human Kidney tissue within the normal limits using anti-ENDOG mouse monoclonal antibody. (Heat-induced epitope retrieval by 10mM citric buffer, pH6.0, 100°C for 10min, TA504189)



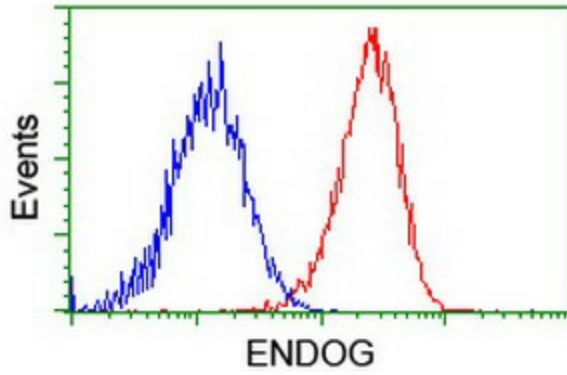
Immunohistochemical staining of paraffin-embedded Adenocarcinoma of Human colon tissue using anti-ENDOG mouse monoclonal antibody. (Heat-induced epitope retrieval by 10mM citric buffer, pH6.0, 100°C for 10min, TA504189)



Immunohistochemical staining of paraffin-embedded Adenocarcinoma of Human breast tissue using anti-ENDOG mouse monoclonal antibody. (Heat-induced epitope retrieval by 10mM citric buffer, pH6.0, 100°C for 10min, TA504189)



Flow cytometric Analysis of Jurkat cells, using anti-ENDOG antibody (TA504189), (Red), compared to a nonspecific negative control antibody, (Blue).



Flow cytometric Analysis of HeLa cells, using anti-ENDOG antibody (TA504189), (Red), compared to a nonspecific negative control antibody, (Blue).