

Product datasheet for **TA504148AM**

TULP3 Mouse Monoclonal Antibody (Biotin conjugated) [Clone ID: OTI1A10]

Product data:

Product Type:	Primary Antibodies
Clone Name:	OTI1A10
Applications:	WB
Recommended Dilution:	WB 1:500~2000
Reactivity:	Human, Dog, Mouse
Host:	Mouse
Isotype:	IgG1
Clonality:	Monoclonal
Immunogen:	Full length human recombinant protein of human TULP3(NP_003315) produced in HEK293T cell.
Formulation:	PBS (pH 7.3) containing 1% BSA, 50% glycerol and 0.02% sodium azide.
Concentration:	0.5 mg/ml
Purification:	Purified from mouse ascites fluids or tissue culture supernatant by affinity chromatography (protein A/G)
Conjugation:	Biotin
Storage:	Store at -20°C as received.
Stability:	Stable for 12 months from date of receipt.
Predicted Protein Size:	49.5 kDa
Gene Name:	TUB like protein 3
Database Link:	NP_003315 Entrez Gene 22158 Mouse Entrez Gene 611832 Dog Entrez Gene 7289 Human O75386



[View online »](#)

Background:

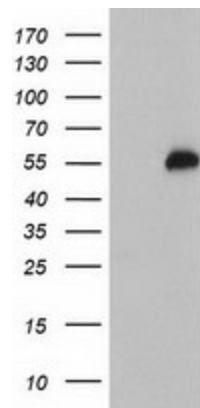
This gene encodes a member of the tubby gene family of bipartite transcription factors. Members of this family have been identified in plants, vertebrates, and invertebrates, and they share a conserved N-terminal transcription activation region and a conserved C-terminal DNA and phosphatidylinositol-phosphate binding region. The encoded protein binds to phosphoinositides in the plasma membrane via its C-terminal region and probably functions as a membrane-bound transcription regulator that translocates to the nucleus in response to phosphoinositide hydrolysis, for instance, induced by G-protein-coupled-receptor signaling. It plays an important role in neuronal development and function. Two transcript variants encoding distinct isoforms have been identified for this gene. [provided by RefSeq]

Synonyms:

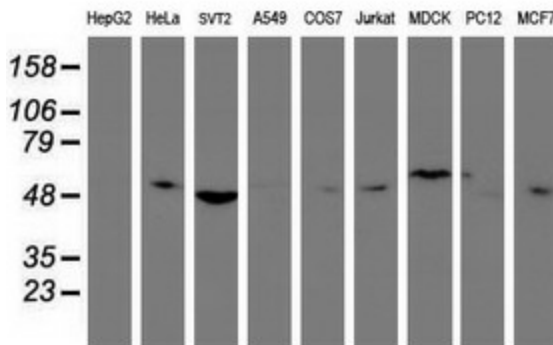
TUBL3

Protein Families:

Druggable Genome, Transcription Factors

Product images:


HEK293T cells were transfected with the pCMV6-ENTRY control (Left lane) or pCMV6-ENTRY TULP3 ([RC207595], Right lane) cDNA for 48 hrs and lysed. Equivalent amounts of cell lysates (5 ug per lane) were separated by SDS-PAGE and immunoblotted with anti-TULP3. Positive lysates [LY418767] (100ug) and [LC418767] (20ug) can be purchased separately from OriGene.



Western blot analysis of extracts (35ug) from 9 different cell lines by using anti-TULP3 monoclonal antibody.