

## Product datasheet for **TA504071AM**

### Aminopeptidase A (ENPEP) Mouse Monoclonal Antibody (Biotin conjugated) [Clone ID: OTI1E3]

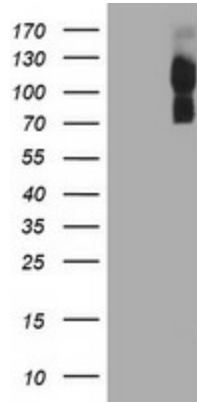
#### Product data:

Product Type:	Primary Antibodies
Clone Name:	OTI1E3
Applications:	FC, IHC, WB
Recommended Dilution:	WB 1:2000, IHC 1:150, FLOW 1:100
Reactivity:	Human
Host:	Mouse
Isotype:	IgG2b
Clonality:	Monoclonal
Immunogen:	Full length human recombinant protein of human ENPEP(NP_001968) produced in HEK293T cell.
Formulation:	PBS (pH 7.3) containing 1% BSA, 50% glycerol and 0.02% sodium azide.
Concentration:	0.5 mg/ml
Purification:	Purified from mouse ascites fluids or tissue culture supernatant by affinity chromatography (protein A/G)
Conjugation:	Biotin
Storage:	Store at -20°C as received.
Stability:	Stable for 12 months from date of receipt.
Predicted Protein Size:	109.1 kDa
Gene Name:	glutamyl aminopeptidase
Database Link:	<a href="#">NP_001968</a> <a href="#">Entrez Gene 2028 Human Q07075</a>
Synonyms:	APA; CD249; gp160
Protein Families:	Druggable Genome, ES Cell Differentiation/IPS, Protease, Transmembrane
Protein Pathways:	Renin-angiotensin system

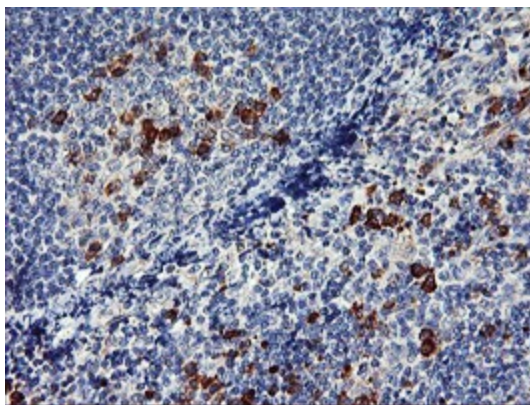


[View online »](#)

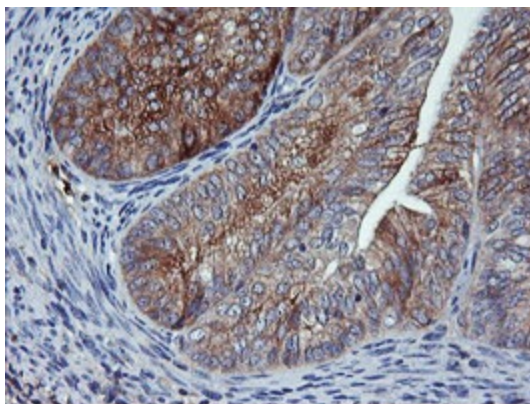
**Product images:**



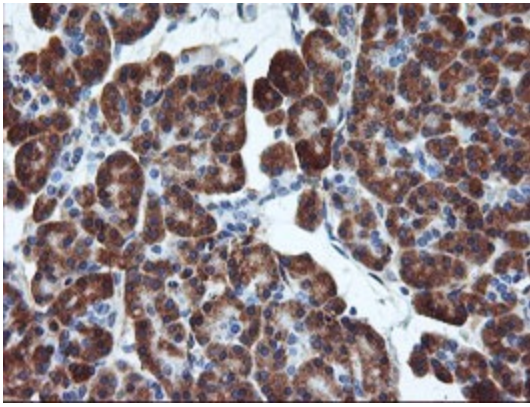
HEK293T cells were transfected with the pCMV6-ENTRY control (Left lane) or pCMV6-ENTRY ENPEP ([RC210521], Right lane) cDNA for 48 hrs and lysed. Equivalent amounts of cell lysates (5 ug per lane) were separated by SDS-PAGE and immunoblotted with anti-ENPEP. Positive lysates [LY419610] (100ug) and [LC419610] (20ug) can be purchased separately from OriGene.



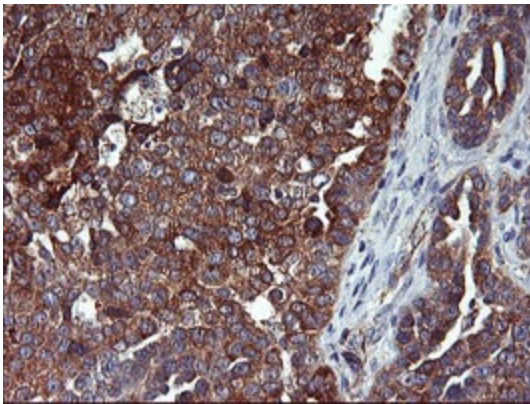
Immunohistochemical staining of paraffin-embedded Human tonsil within the normal limits using anti-ENPEP mouse monoclonal antibody. (Heat-induced epitope retrieval by 10mM citric buffer, pH6.0, 100°C for 10min, [TA504071])



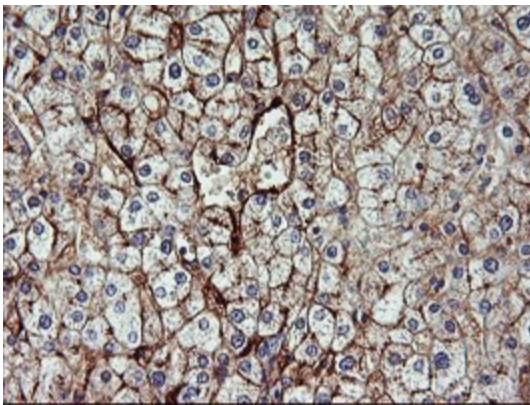
Immunohistochemical staining of paraffin-embedded Adenocarcinoma of Human endometrium tissue using anti-ENPEP mouse monoclonal antibody. (Heat-induced epitope retrieval by 10mM citric buffer, pH6.0, 100°C for 10min, [TA504071])



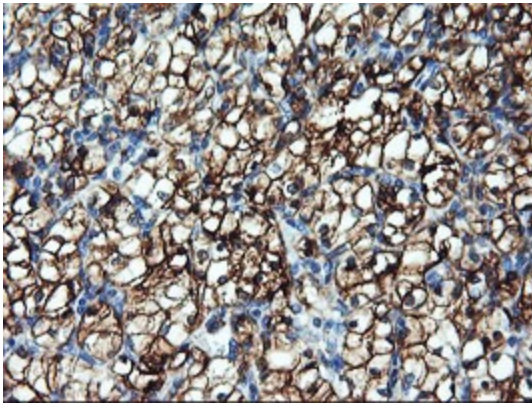
Immunohistochemical staining of paraffin-embedded Human pancreas tissue within the normal limits using anti-ENPEP mouse monoclonal antibody. (Heat-induced epitope retrieval by 10mM citric buffer, pH6.0, 100°C for 10min, [TA504071])



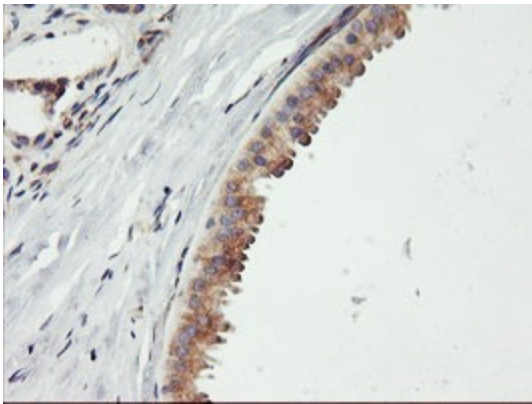
Immunohistochemical staining of paraffin-embedded Adenocarcinoma of Human ovary tissue using anti-ENPEP mouse monoclonal antibody. (Heat-induced epitope retrieval by 10mM citric buffer, pH6.0, 100°C for 10min, [TA504071])



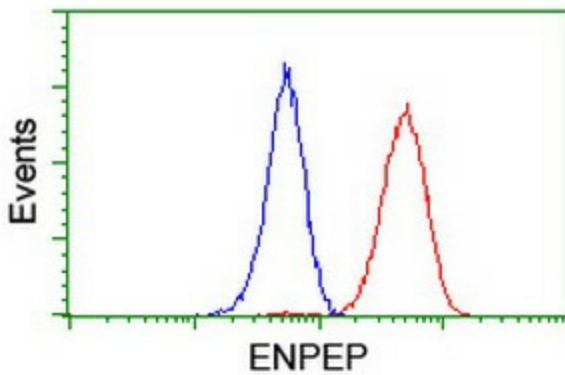
Immunohistochemical staining of paraffin-embedded Human liver tissue within the normal limits using anti-ENPEP mouse monoclonal antibody. (Heat-induced epitope retrieval by 10mM citric buffer, pH6.0, 100°C for 10min, [TA504071])



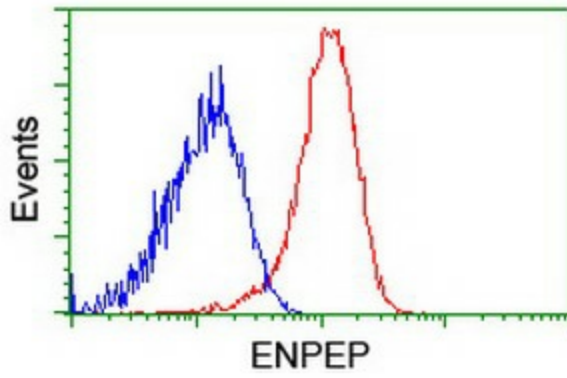
Immunohistochemical staining of paraffin-embedded Carcinoma of Human kidney tissue using anti-ENPEP mouse monoclonal antibody. (Heat-induced epitope retrieval by 10mM citric buffer, pH6.0, 100°C for 10min, [TA504071])



Immunohistochemical staining of paraffin-embedded Human breast tissue within the normal limits using anti-ENPEP mouse monoclonal antibody. (Heat-induced epitope retrieval by 10mM citric buffer, pH6.0, 100°C for 10min, [TA504071])



Flow cytometric Analysis of Jurkat cells, using anti-ENPEP antibody ([TA504071]), (Red), compared to a nonspecific negative control antibody, (Blue).



Flow cytometric Analysis of Hela cells, using anti-ENPEP antibody ([TA504071]), (Red), compared to a nonspecific negative control antibody, (Blue).