

Product datasheet for **TA503953**

C1S Mouse Monoclonal Antibody [Clone ID: OTI1G1]

Product data:

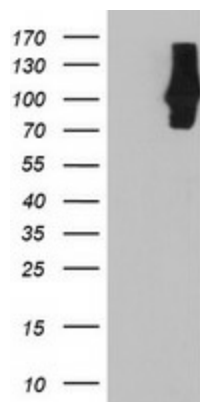
Product Type:	Primary Antibodies
Clone Name:	OTI1G1
Applications:	IHC, WB
Recommended Dilution:	WB 1:500, IHC 1:150
Reactivity:	Human
Host:	Mouse
Isotype:	IgG1
Clonality:	Monoclonal
Immunogen:	Full length human recombinant protein of human C1S(NP_001725) produced in HEK293T cell.
Formulation:	PBS (pH 7.3) containing 1% BSA, 50% glycerol and 0.02% sodium azide.
Concentration:	1 mg/ml
Purification:	Purified from mouse ascites fluids or tissue culture supernatant by affinity chromatography (protein A/G)
Conjugation:	Unconjugated
Storage:	Store at -20°C as received.
Stability:	Stable for 12 months from date of receipt.
Predicted Protein Size:	74.8 kDa
Gene Name:	complement C1s
Database Link:	NP_001725 Entrez Gene 716 Human P09871
Background:	This gene encodes a serine protease, which is a major constituent of the human complement subcomponent C1. C1s associates with two other complement components C1r and C1q in order to yield the first component of the serum complement system. Defects in this gene are the cause of selective C1s deficiency. [provided by RefSeq]
Synonyms:	FLJ44757
Protein Families:	Druggable Genome, Protease



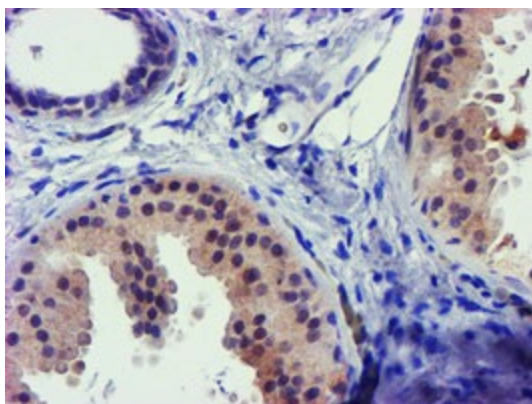
[View online »](#)

Protein Pathways: Complement and coagulation cascades, Systemic lupus erythematosus

Product images:



HEK293T cells were transfected with the pCMV6-ENTRY control (Cat# [PS100001], Left lane) or pCMV6-ENTRY C1S (Cat# [RC218963], Right lane) cDNA for 48 hrs and lysed. Equivalent amounts of cell lysates (5 ug per lane) were separated by SDS-PAGE and immunoblotted with anti-C1S (Cat# TA503953). Positive lysates [LY400655] (100ug) and [LC400655] (20ug) can be purchased separately from OriGene.



Immunohistochemical staining of paraffin-embedded Human breast tissue within the normal limits using anti-C1S mouse monoclonal antibody. (Heat-induced epitope retrieval by 10mM citric buffer, pH6.0, 100°C for 10min, TA503953)