

Product datasheet for **TA503354**

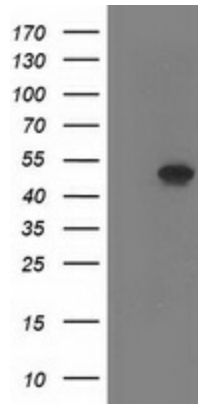
SETD7 Mouse Monoclonal Antibody [Clone ID: OTI5B11]

Product data:

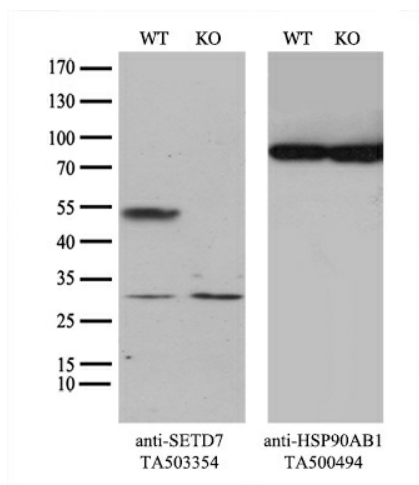
Product Type:	Primary Antibodies
Clone Name:	OTI5B11
Applications:	FC, WB
Recommended Dilution:	WB 1:500, FLOW 1:100
Reactivity:	Human, Mouse, Rat
Host:	Mouse
Isotype:	IgG2a
Clonality:	Monoclonal
Immunogen:	Full length human recombinant protein of human SETD7(NP_085151) produced in HEK293T cell.
Formulation:	PBS (pH 7.3) containing 1% BSA, 50% glycerol and 0.02% sodium azide.
Concentration:	0.25 mg/ml
Purification:	Purified from mouse ascites fluids or tissue culture supernatant by affinity chromatography (protein A/G)
Conjugation:	Unconjugated
Storage:	Store at -20°C as received.
Stability:	Stable for 12 months from date of receipt.
Predicted Protein Size:	40.5 kDa
Gene Name:	SET domain containing 7, histone lysine methyltransferase
Database Link:	NP_085151 Entrez Gene 73251 Mouse Entrez Gene 689954 Rat Entrez Gene 80854 Human Q8WTS6
Synonyms:	KMT7; SET7; SET7/9; SET9
Protein Families:	Druggable Genome
Protein Pathways:	Lysine degradation



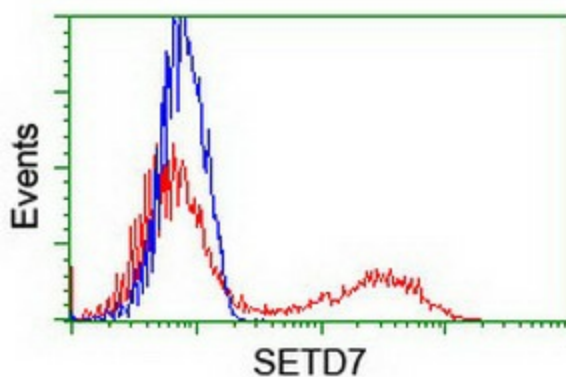
[View online »](#)

Product images:


HEK293T cells were transfected with the pCMV6-ENTRY control (Left lane) or pCMV6-ENTRY SETD7 ([RC219244], Right lane) cDNA for 48 hrs and lysed. Equivalent amounts of cell lysates (5 ug per lane) were separated by SDS-PAGE and immunoblotted with anti-SETD7. Positive lysates [LY403067] (100ug) and [LC403067] (20ug) can be purchased separately from OriGene.



Equivalent amounts of cell lysates (10 ug per lane) of wild-type HeLa cells (WT, Cat# LC810HELA) and SETD7-Knockout HeLa cells (KO, Cat# [LC833317]) were separated by SDS-PAGE and immunoblotted with anti-SETD7 monoclonal antibody TA503354 (1:200^v). Then the blotted membrane was stripped and reprobed with anti-HSP90 antibody as a loading control.



HEK293T cells transfected with either [RC219244] overexpress plasmid (Red) or empty vector control plasmid (Blue) were immunostained by anti-SETD7 antibody (TA503354), and then analyzed by flow cytometry.