

Product datasheet for **TA503336**

PDE1B Mouse Monoclonal Antibody [Clone ID: OT11D6]

Product data:

| | |
|-------------------------|-----------------------------------------------------------------------------------------------------------------------------------------------------------------------------|
| Product Type: | Primary Antibodies |
| Clone Name: | OT11D6 |
| Applications: | IF, WB |
| Recommended Dilution: | WB 1:2000, IF 1:100 |
| Reactivity: | Human, Mouse, Rat |
| Host: | Mouse |
| Isotype: | IgG2b |
| Clonality: | Monoclonal |
| Immunogen: | Full length human recombinant protein of human PDE1B(NP_000915) produced in HEK293T cell. |
| Formulation: | PBS (pH 7.3) containing 1% BSA, 50% glycerol and 0.02% sodium azide. |
| Concentration: | 0.74 mg/ml |
| Purification: | Purified from mouse ascites fluids or tissue culture supernatant by affinity chromatography (protein A/G) |
| Conjugation: | Unconjugated |
| Storage: | Store at -20°C as received. |
| Stability: | Stable for 12 months from date of receipt. |
| Predicted Protein Size: | 61.2 kDa |
| Gene Name: | phosphodiesterase 1B |
| Database Link: | NP_000915 Entrez Gene 18574 Mouse Entrez Gene 29691 Rat Entrez Gene 5153 Human Q01064 |



[View online »](#)

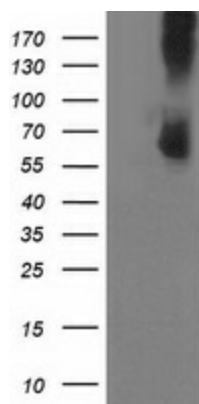
Background: The protein encoded by this gene belongs to the cyclic nucleotide phosphodiesterase (PDE) family, and PDE1 subfamily. Members of the PDE1 family are calmodulin-dependent PDEs that are stimulated by a calcium-calmodulin complex. This PDE has dual-specificity for the second messengers, cAMP and cGMP, with a preference for cGMP as a substrate. cAMP and cGMP function as key regulators of many important physiological processes. Alternatively spliced transcript variants encoding different isoforms have been described for this gene. [provided by RefSeq, Jul 2011]

Synonyms: PDE1B1; PDES1B

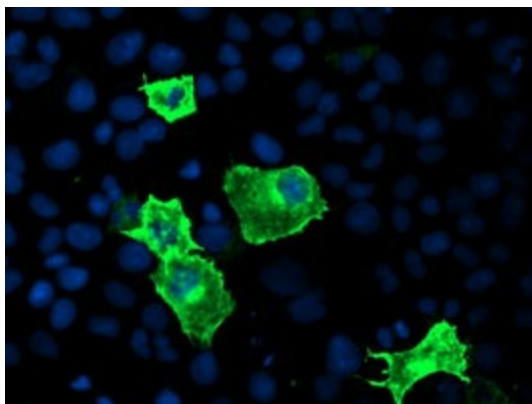
Protein Families: Druggable Genome

Protein Pathways: Calcium signaling pathway, Progesterone-mediated oocyte maturation, Purine metabolism

Product images:



HEK293T cells were transfected with the pCMV6-ENTRY control (Left lane) or pCMV6-ENTRY PDE1B ([RC206588], Right lane) cDNA for 48 hrs and lysed. Equivalent amounts of cell lysates (5 ug per lane) were separated by SDS-PAGE and immunoblotted with anti-PDE1B. Positive lysates [LY400337] (100ug) and [LC400337] (20ug) can be purchased separately from OriGene.



Anti-PDE1B mouse monoclonal antibody (TA503336) immunofluorescent staining of COS7 cells transiently transfected by pCMV6-ENTRY PDE1B ([RC206588]).