

Product datasheet for **TA503129**

beta IV Tubulin (TUBB4A) Mouse Monoclonal Antibody [Clone ID: OTI5C1]

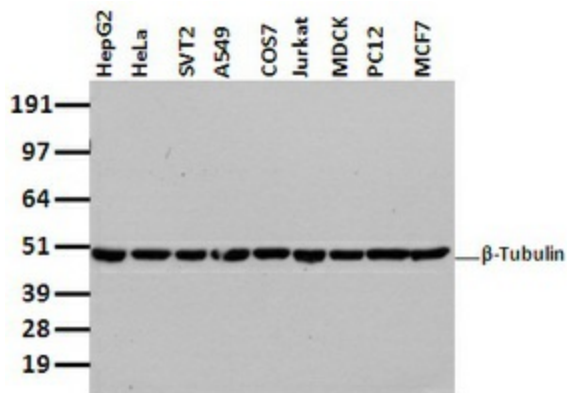
Product data:

Product Type:	Primary Antibodies
Clone Name:	OTI5C1
Applications:	FC, IF, IHC, WB
Recommended Dilution:	WB 1:500-2000, IHC 1:150, IF 1:100, FC 1:100
Reactivity:	Human, Dog, Rat, Monkey, Mouse
Host:	Mouse
Isotype:	IgG2b
Clonality:	Monoclonal
Immunogen:	Full length human recombinant protein of human TUBB4 (NP_006078) produced in HEK293T cell.
Formulation:	PBS (pH 7.3) containing 1% BSA, 50% glycerol and 0.02% sodium azide.
Concentration:	1 mg/ml
Purification:	Purified from mouse ascites fluids or tissue culture supernatant by affinity chromatography (protein A/G)
Conjugation:	Unconjugated
Storage:	Store at -20°C as received.
Stability:	Stable for 12 months from date of receipt.
Predicted Protein Size:	49.4 kDa
Gene Name:	tubulin beta 4A class IVa
Database Link:	NP_006078 Entrez Gene 22153 Mouse Entrez Gene 29213 Rat Entrez Gene 100855815 Dog Entrez Gene 703019 Monkey Entrez Gene 10382 Human P04350
Synonyms:	beta-5; DYT4; TUBB4
Protein Families:	Druggable Genome
Protein Pathways:	Gap junction, Pathogenic Escherichia coli infection

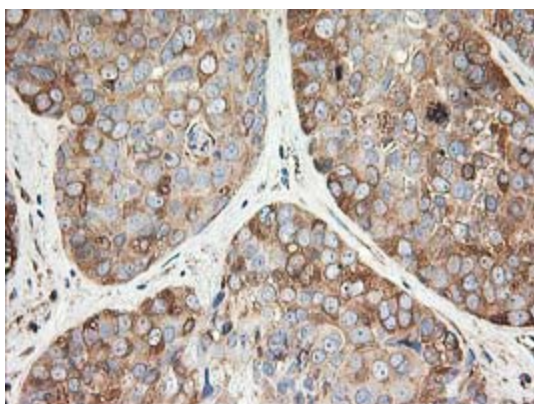


[View online »](#)

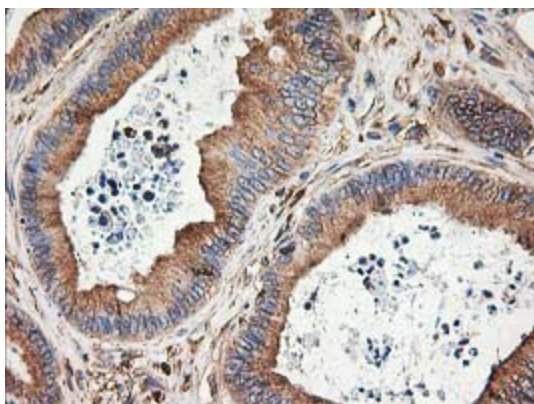
Product images:



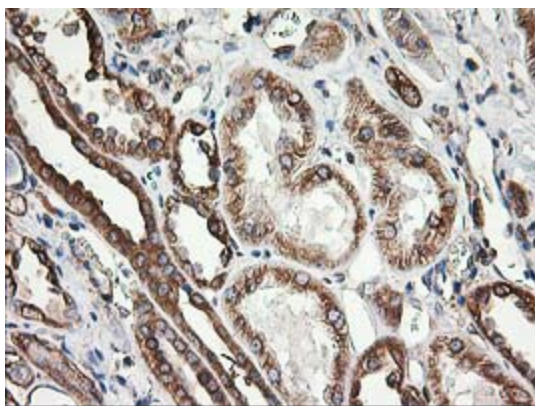
Western blot analysis of extracts (35ug) from 9 different cell lines by using anti-TUBB4 monoclonal antibody.



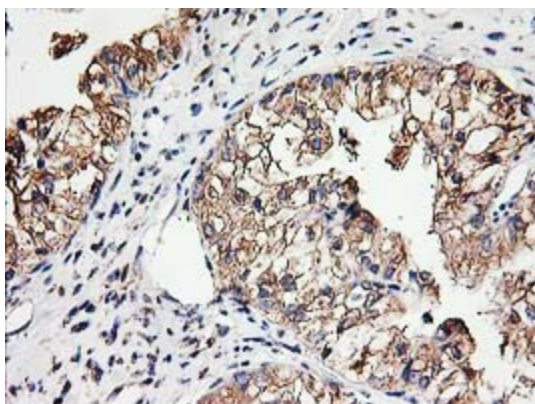
Immunohistochemical staining of paraffin-embedded Adenocarcinoma of Human breast tissue using anti-TUBB4 mouse monoclonal antibody. (Heat-induced epitope retrieval by 10mM citric buffer, pH6.0, 100°C for 10min, TA503129)



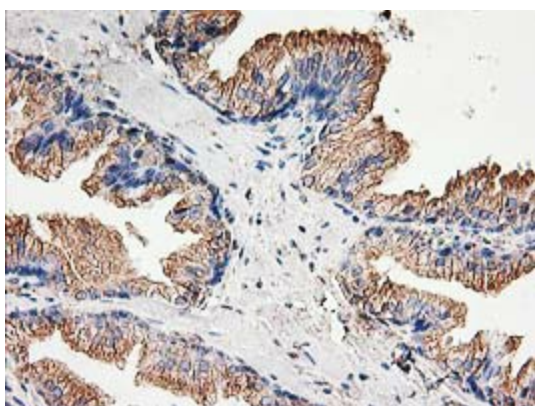
Immunohistochemical staining of paraffin-embedded Adenocarcinoma of Human colon tissue using anti-TUBB4 mouse monoclonal antibody. (Heat-induced epitope retrieval by 10mM citric buffer, pH6.0, 100°C for 10min, TA503129)



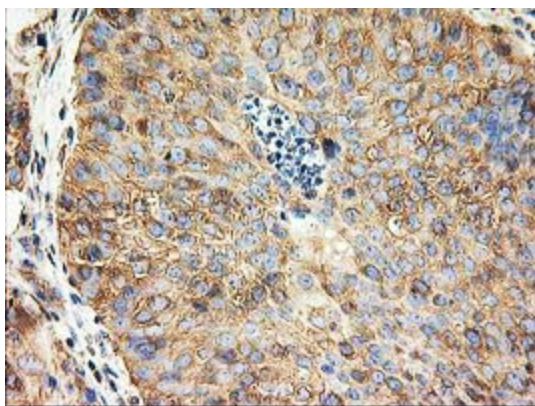
Immunohistochemical staining of paraffin-embedded Human Kidney tissue within the normal limits using anti-TUBB4 mouse monoclonal antibody. (Heat-induced epitope retrieval by 10mM citric buffer, pH6.0, 100°C for 10min, TA503129)



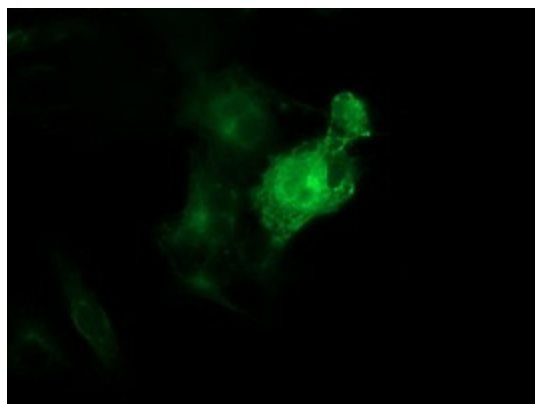
Immunohistochemical staining of paraffin-embedded Adenocarcinoma of Human ovary tissue using anti-TUBB4 mouse monoclonal antibody. (Heat-induced epitope retrieval by 10mM citric buffer, pH6.0, 100°C for 10min, TA503129)



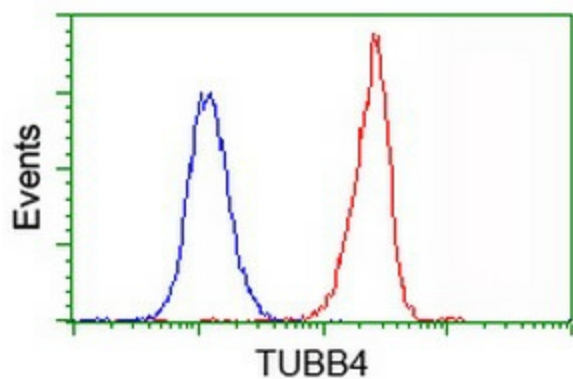
Immunohistochemical staining of paraffin-embedded Human prostate tissue within the normal limits using anti-TUBB4 mouse monoclonal antibody. (Heat-induced epitope retrieval by 10mM citric buffer, pH6.0, 100°C for 10min, TA503129)



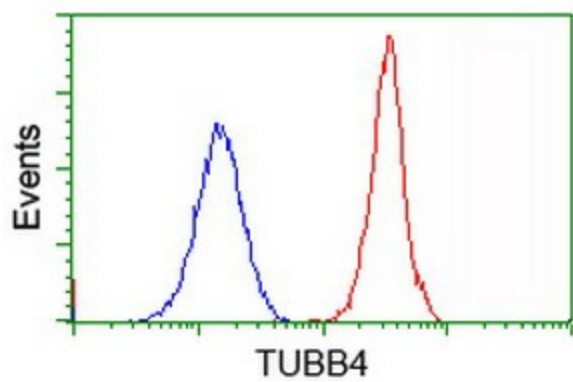
Immunohistochemical staining of paraffin-embedded Carcinoma of Human bladder tissue using anti-TUBB4 mouse monoclonal antibody. (Heat-induced epitope retrieval by 10mM citric buffer, pH6.0, 100°C for 10min, TA503129)



Anti-TUBB4 mouse monoclonal antibody (TA503129) immunofluorescent staining of COS7 cells transiently transfected by pCMV6-ENTRY TUBB4 ([RC203945]).



Flow cytometric Analysis of HeLa cells, using anti-TUBB4 antibody (TA503129), (Red), compared to a nonspecific negative control antibody, (Blue).



Flow cytometric Analysis of Jurkat cells, using anti-TUBB4 antibody (TA503129), (Red), compared to a nonspecific negative control antibody, (Blue).