

Product datasheet for **TA503079BM**

ILVBL Mouse Monoclonal Antibody (HRP conjugated) [Clone ID: OTI8B12]

Product data:

Product Type:	Primary Antibodies
Clone Name:	OTI8B12
Applications:	FC, IF, IHC, WB
Recommended Dilution:	WB 1:500~2000, IHC 1:150, IF 1:100, FLOW 1:100
Reactivity:	Human, Dog, Rat, Monkey, Mouse
Host:	Mouse
Isotype:	IgG2b
Clonality:	Monoclonal
Immunogen:	Full length human recombinant protein of human ILVBL(NP_006835) produced in HEK293T cell.
Formulation:	PBS (pH 7.3) containing 1% BSA, 50% glycerol.
Concentration:	0.5 mg/ml
Purification:	Purified from mouse ascites fluids or tissue culture supernatant by affinity chromatography (protein A/G)
Conjugation:	HRP
Storage:	Store at -20°C as received.
Stability:	Stable for 12 months from date of receipt.
Predicted Protein Size:	67.7 kDa
Gene Name:	ilvB acetolactate synthase like
Database Link:	NP_006835 Entrez Gene 362843 Rat Entrez Gene 100856083 Dog Entrez Gene 718086 Monkey Entrez Gene 10994 Human A1L0T0
Background:	The protein encoded by this gene shares similarity with several thiamine pyrophosphate-binding proteins identified in bacteria, yeast, and plants. The highest degree of similarity is found with bacterial acetolactate synthases (AHAS), which are enzymes that catalyze the first step in branched-chain amino acid biosynthesis. [provided by RefSeq]. COMPLETENESS: complete on the 3' end.

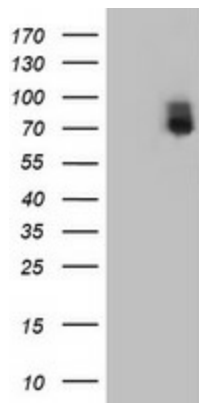


[View online »](#)

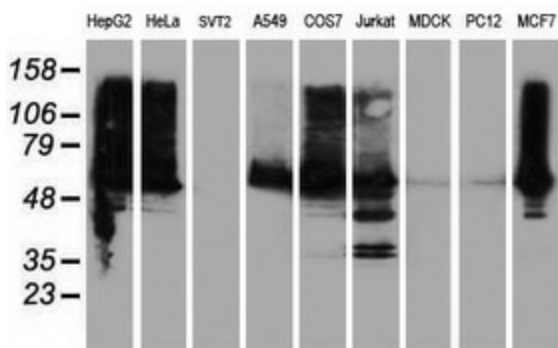
Synonyms: 209L8; AHAS; ILV2H

Protein Families: Transmembrane

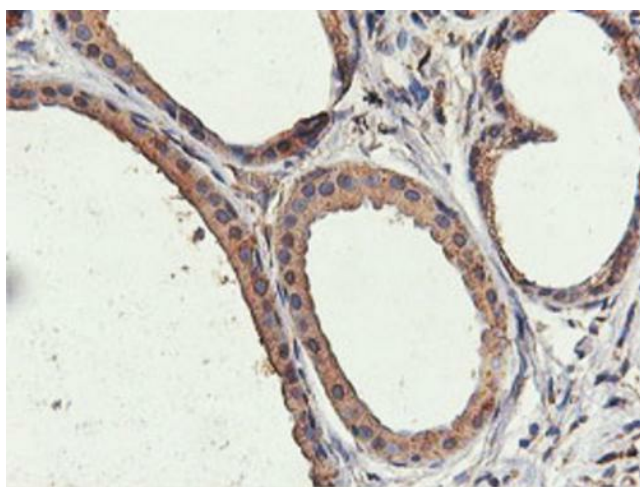
Product images:



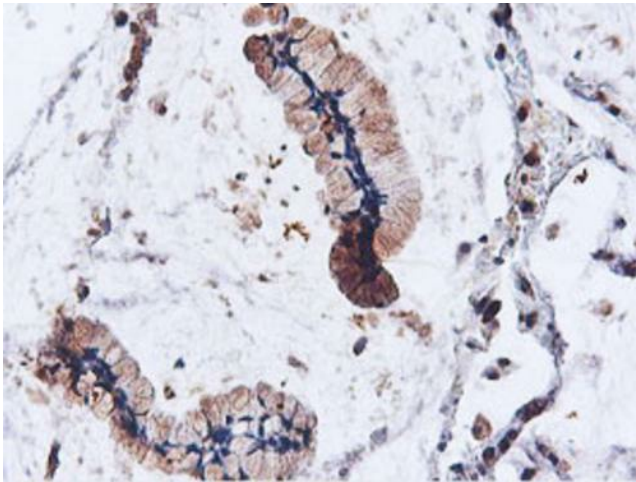
HEK293T cells were transfected with the pCMV6-ENTRY control (Left lane) or pCMV6-ENTRY ILVBL ([RC203987], Right lane) cDNA for 48 hrs and lysed. Equivalent amounts of cell lysates (5 ug per lane) were separated by SDS-PAGE and immunoblotted with anti-ILVBL. Positive lysates [LY416389] (100ug) and [LC416389] (20ug) can be purchased separately from OriGene.



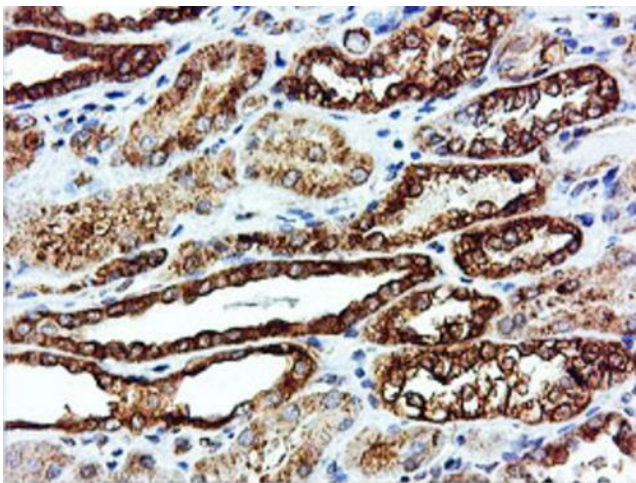
Western blot analysis of extracts (35ug) from 9 different cell lines by using anti-ILVBL monoclonal antibody.



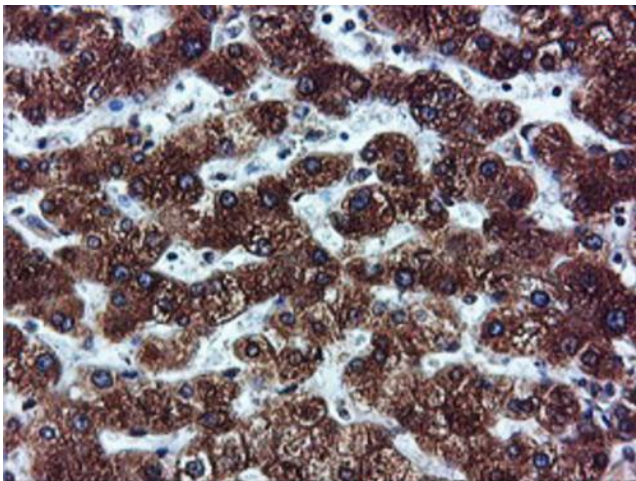
Immunohistochemical staining of paraffin-embedded Human breast tissue within the normal limits using anti-ILVBL mouse monoclonal antibody. (Heat-induced epitope retrieval by 10mM citric buffer, pH6.0, 100°C for 10min, [TA503079])



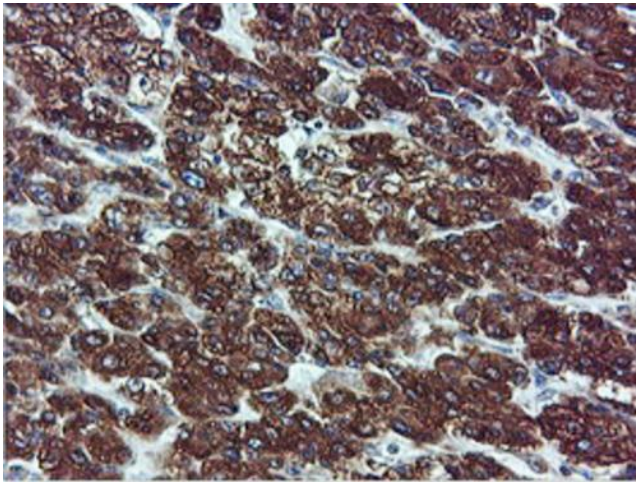
Immunohistochemical staining of paraffin-embedded Adenocarcinoma of Human colon tissue using anti-ILVBL mouse monoclonal antibody. (Heat-induced epitope retrieval by 10mM citric buffer, pH6.0, 100°C for 10min, [TA503079])



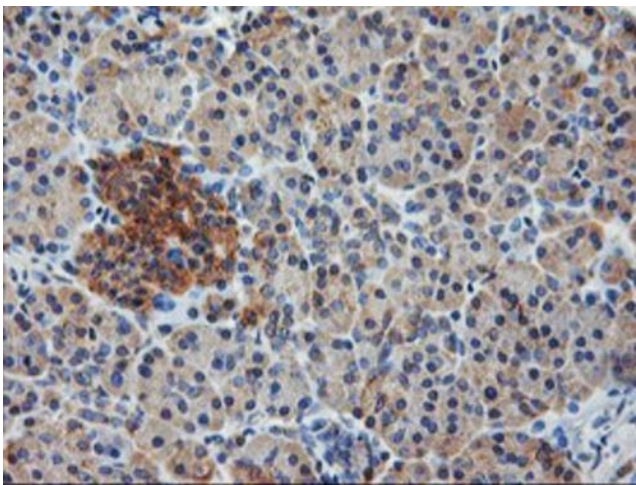
Immunohistochemical staining of paraffin-embedded Human Kidney tissue within the normal limits using anti-ILVBL mouse monoclonal antibody. (Heat-induced epitope retrieval by 10mM citric buffer, pH6.0, 100°C for 10min, [TA503079])



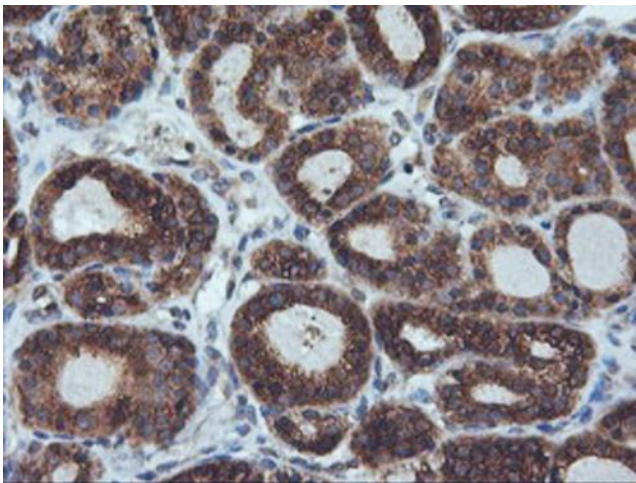
Immunohistochemical staining of paraffin-embedded Human liver tissue within the normal limits using anti-ILVBL mouse monoclonal antibody. (Heat-induced epitope retrieval by 10mM citric buffer, pH6.0, 100°C for 10min, [TA503079])



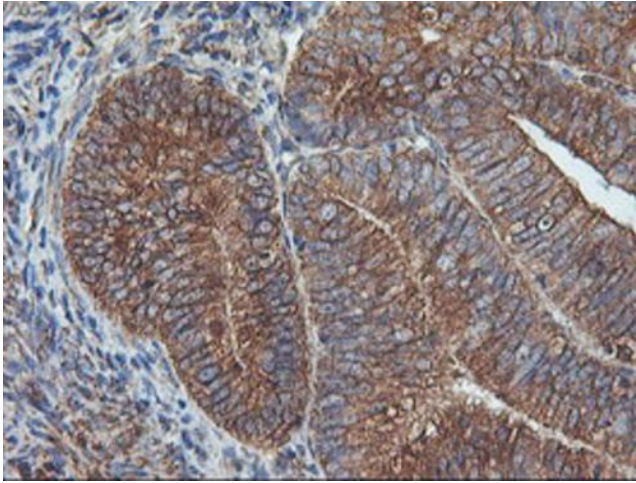
Immunohistochemical staining of paraffin-embedded Carcinoma of Human liver tissue using anti-ILVBL mouse monoclonal antibody. (Heat-induced epitope retrieval by 10mM citric buffer, pH6.0, 100°C for 10min, [TA503079])



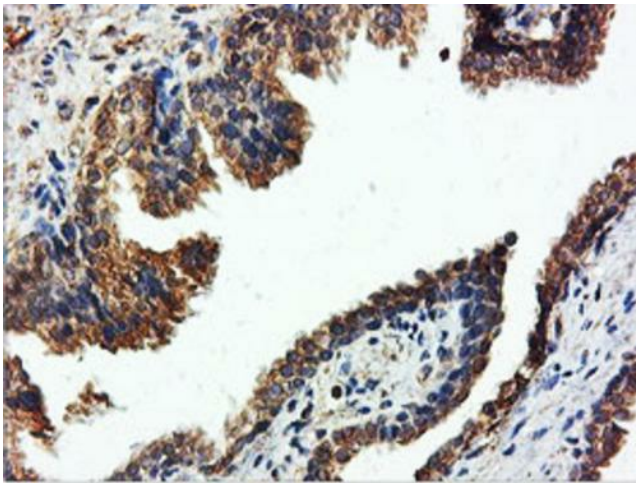
Immunohistochemical staining of paraffin-embedded Human pancreas tissue within the normal limits using anti-ILVBL mouse monoclonal antibody. (Heat-induced epitope retrieval by 10mM citric buffer, pH6.0, 100°C for 10min, [TA503079])



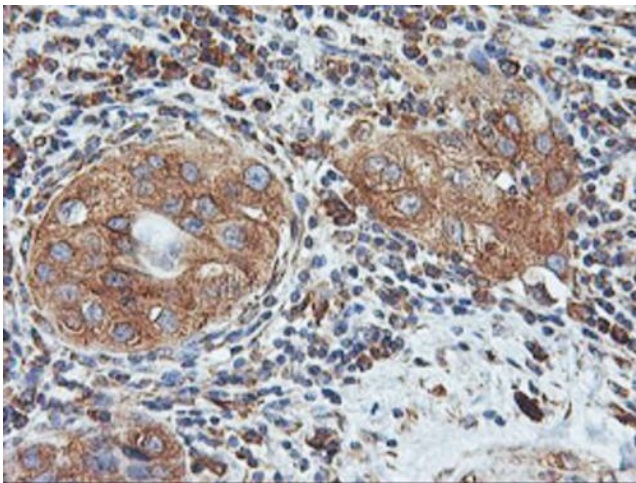
Immunohistochemical staining of paraffin-embedded Carcinoma of Human thyroid tissue using anti-ILVBL mouse monoclonal antibody. (Heat-induced epitope retrieval by 10mM citric buffer, pH6.0, 100°C for 10min, [TA503079])



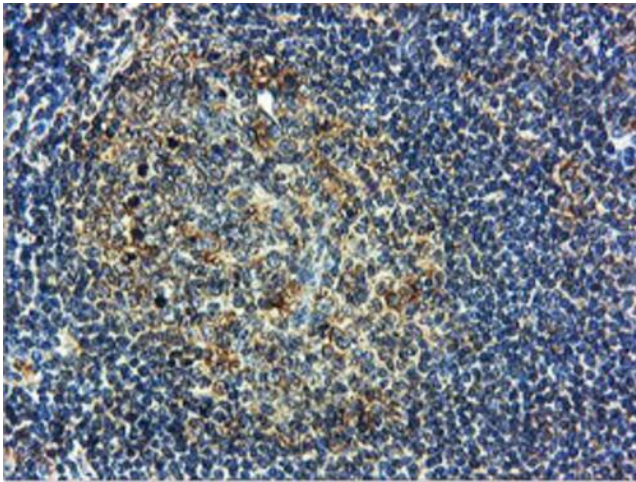
Immunohistochemical staining of paraffin-embedded Adenocarcinoma of Human endometrium tissue using anti-ILVBL mouse monoclonal antibody. (Heat-induced epitope retrieval by 10mM citric buffer, pH6.0, 100°C for 10min, [TA503079])



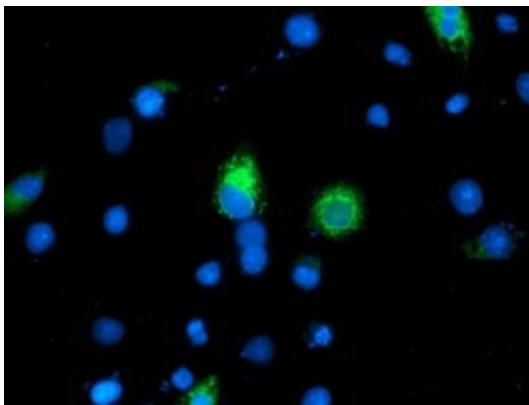
Immunohistochemical staining of paraffin-embedded Human prostate tissue within the normal limits using anti-ILVBL mouse monoclonal antibody. (Heat-induced epitope retrieval by 10mM citric buffer, pH6.0, 100°C for 10min, [TA503079])



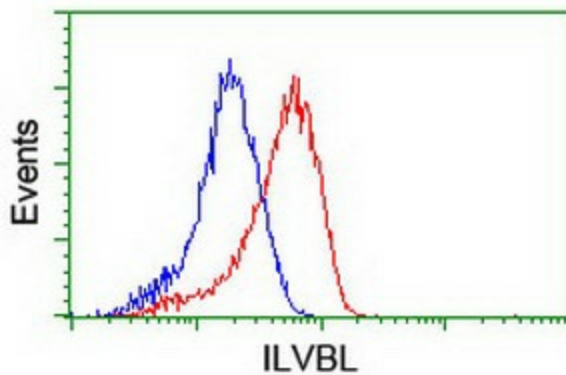
Immunohistochemical staining of paraffin-embedded Carcinoma of Human bladder tissue using anti-ILVBL mouse monoclonal antibody. (Heat-induced epitope retrieval by 10mM citric buffer, pH6.0, 100°C for 10min, [TA503079])



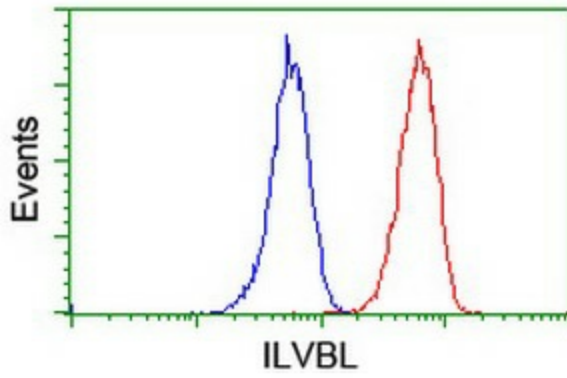
Immunohistochemical staining of paraffin-embedded Human tonsil within the normal limits using anti-ILVBL mouse monoclonal antibody. (Heat-induced epitope retrieval by 10mM citric buffer, pH6.0, 100°C for 10min, [TA503079])



Anti-ILVBL mouse monoclonal antibody ([TA503079]) immunofluorescent staining of COS7 cells transiently transfected by pCMV6-ENTRY ILVBL ([RC203987]).



Flow cytometric Analysis of Hela cells, using anti-ILVBL antibody ([TA503079]), (Red), compared to a nonspecific negative control antibody, (Blue).



Flow cytometric Analysis of Jurkat cells, using anti-ILVBL antibody ([TA503079]), (Red), compared to a nonspecific negative control antibody, (Blue).