

Product datasheet for **TA503050S**

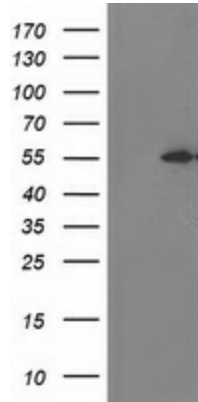
MDS028 (ITFG2) Mouse Monoclonal Antibody [Clone ID: OTI3C4]

Product data:

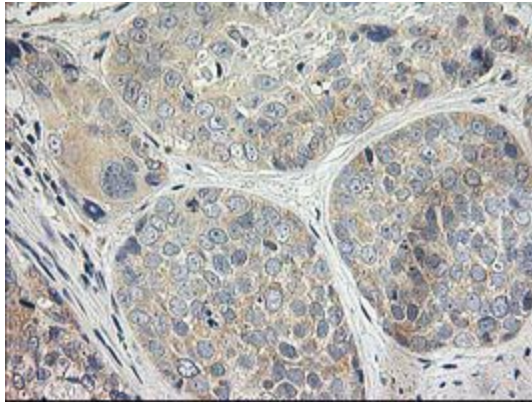
Product Type:	Primary Antibodies
Clone Name:	OTI3C4
Applications:	IF, IHC, WB
Recommended Dilution:	WB 1:500, IHC 1:150, IF 1:100
Reactivity:	Human, Mouse, Rat
Host:	Mouse
Isotype:	IgG1
Clonality:	Monoclonal
Immunogen:	Full length human recombinant protein of human ITFG2 (NP_060933) produced in HEK293T cell.
Formulation:	PBS (pH 7.3) containing 1% BSA, 50% glycerol and 0.02% sodium azide.
Concentration:	0.49 mg/ml
Purification:	Purified from mouse ascites fluids or tissue culture supernatant by affinity chromatography (protein A/G)
Conjugation:	Unconjugated
Storage:	Store at -20°C as received.
Stability:	Stable for 12 months from date of receipt.
Predicted Protein Size:	49.1 kDa
Gene Name:	integrin alpha FG-GAP repeat containing 2
Database Link:	NP_060933 Entrez Gene 362441 RatEntrez Gene 55846 Human Q969R8
Synonyms:	MDS028
Protein Families:	Druggable Genome



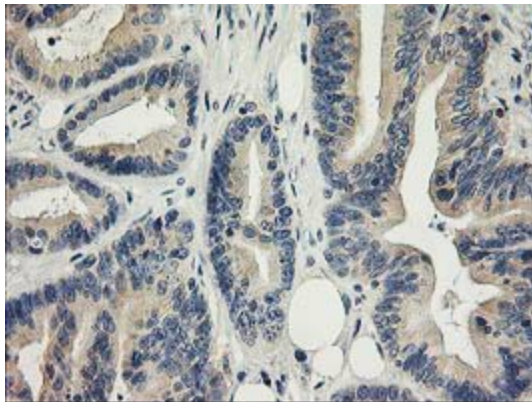
[View online »](#)

Product images:

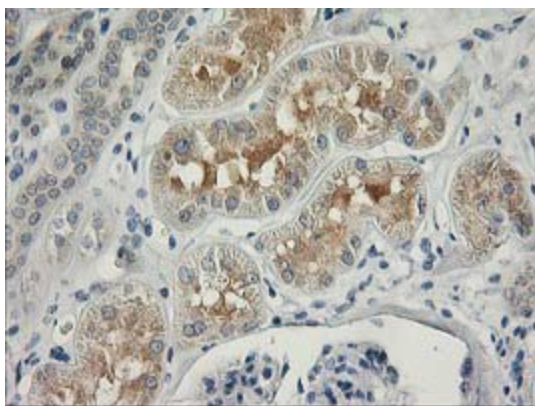
HEK293T cells were transfected with the pCMV6-ENTRY control (Cat# [PS100001], Left lane) or pCMV6-ENTRY ITFG2 (Cat# [RC200818], Right lane) cDNA for 48 hrs and lysed. Equivalent amounts of cell lysates (5 ug per lane) were separated by SDS-PAGE and immunoblotted with anti-ITFG2 (Cat# [TA503050]). Positive lysates [LY413041] (100ug) and [LC413041] (20ug) can be purchased separately from OriGene.



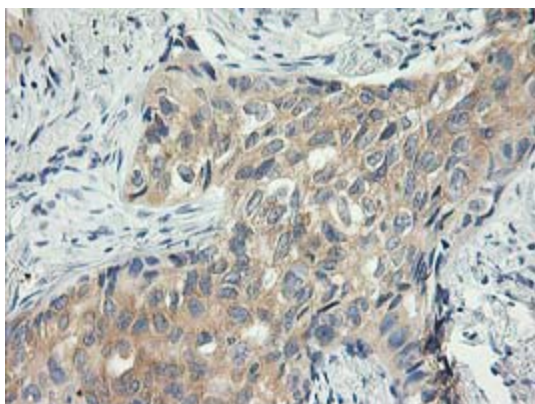
Immunohistochemical staining of paraffin-embedded Adenocarcinoma of Human breast tissue using anti-ITFG2 mouse monoclonal antibody. (Heat-induced epitope retrieval by 10mM citric buffer, pH6.0, 100°C for 10min, [TA503050])



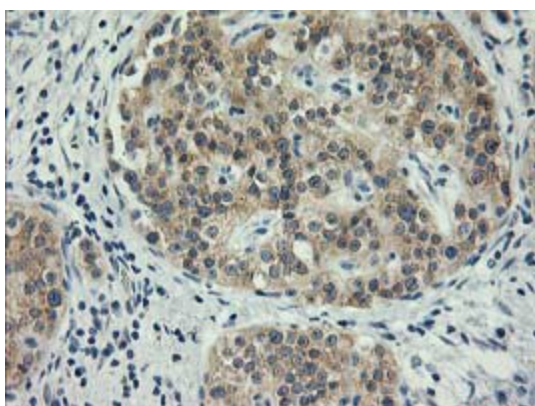
Immunohistochemical staining of paraffin-embedded Adenocarcinoma of Human colon tissue using anti-ITFG2 mouse monoclonal antibody. (Heat-induced epitope retrieval by 10mM citric buffer, pH6.0, 100°C for 10min, [TA503050])



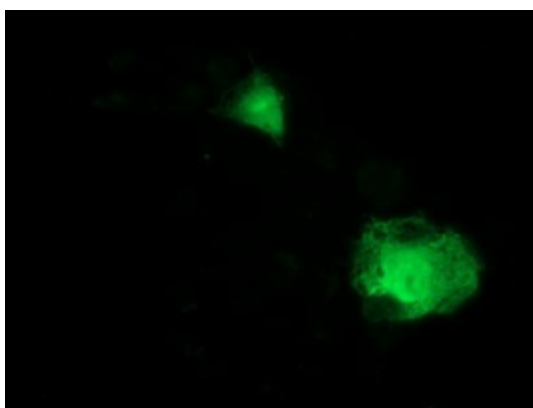
Immunohistochemical staining of paraffin-embedded Human Kidney tissue within the normal limits using anti-ITFG2 mouse monoclonal antibody. (Heat-induced epitope retrieval by 10mM citric buffer, pH6.0, 100°C for 10min, [TA503050])



Immunohistochemical staining of paraffin-embedded Carcinoma of Human lung tissue using anti-ITFG2 mouse monoclonal antibody. (Heat-induced epitope retrieval by 10mM citric buffer, pH6.0, 100°C for 10min, [TA503050])



Immunohistochemical staining of paraffin-embedded Carcinoma of Human pancreas tissue using anti-ITFG2 mouse monoclonal antibody. (Heat-induced epitope retrieval by 10mM citric buffer, pH6.0, 100°C for 10min, [TA503050])



Anti-ITFG2 mouse monoclonal antibody ([TA503050]) immunofluorescent staining of COS7 cells transiently transfected by pCMV6-ENTRY ITFG2 ([RC200818]).