

## Product datasheet for **TA502965AM**

### **SNAP25 Mouse Monoclonal Antibody (Biotin conjugated) [Clone ID: OTI 1E6]**

#### **Product data:**

<b>Product Type:</b>	Primary Antibodies
<b>Clone Name:</b>	OTI 1E6
<b>Applications:</b>	FC, IF, IHC, WB
<b>Recommended Dilution:</b>	WB 1:2000, IHC 1:150, IF 1:100, FLOW 1:100
<b>Reactivity:</b>	Human, Mouse, Rat
<b>Host:</b>	Mouse
<b>Isotype:</b>	IgG2b
<b>Clonality:</b>	Monoclonal
<b>Immunogen:</b>	Full length human recombinant protein of human SNAP25 (NP_003072) produced in HEK293T cell.
<b>Formulation:</b>	PBS (pH 7.3) containing 1% BSA, 50% glycerol and 0.02% sodium azide.
<b>Concentration:</b>	0.5 mg/ml
<b>Purification:</b>	Purified from mouse ascites fluids or tissue culture supernatant by affinity chromatography (protein A/G)
<b>Conjugation:</b>	Biotin
<b>Storage:</b>	Store at -20°C as received.
<b>Stability:</b>	Stable for 12 months from date of receipt.
<b>Predicted Protein Size:</b>	23.2 kDa
<b>Gene Name:</b>	synaptosome associated protein 25
<b>Database Link:</b>	<a href="#">NP_003072</a> <a href="#">Entrez Gene 20614 Mouse</a> <a href="#">Entrez Gene 25012 Rat</a> <a href="#">Entrez Gene 6616 Human</a> <a href="#">P60880</a>



[View online »](#)

**Background:**

Synaptic vesicle membrane docking and fusion is mediated by SNAREs (soluble N-ethylmaleimide-sensitive factor attachment protein receptors) located on the vesicle membrane (v-SNAREs) and the target membrane (t-SNAREs). The assembled v-SNARE/t-SNARE complex consists of a bundle of four helices, one of which is supplied by v-SNARE and the other three by t-SNARE. For t-SNAREs on the plasma membrane, the protein syntaxin supplies one helix and the protein encoded by this gene contributes the other two. Therefore, this gene product is a presynaptic plasma membrane protein involved in the regulation of neurotransmitter release. Two alternative transcript variants encoding different protein isoforms have been described for this gene. [provided by RefSeq, Jul 2008]

**Synonyms:**

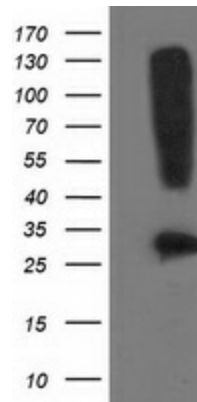
bA416N4.2; dj1068F16.2; RIC-4; RIC4; SEC9; SNAP; SNAP-25

**Protein Families:**

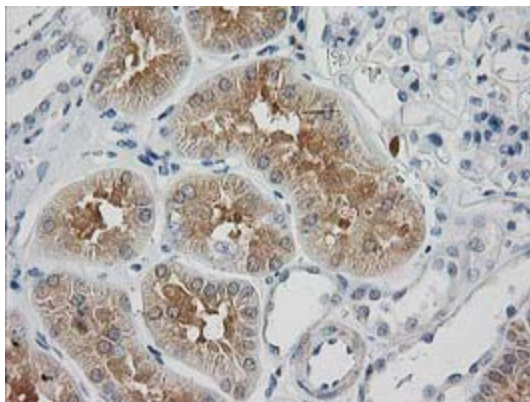
Druggable Genome

**Protein Pathways:**

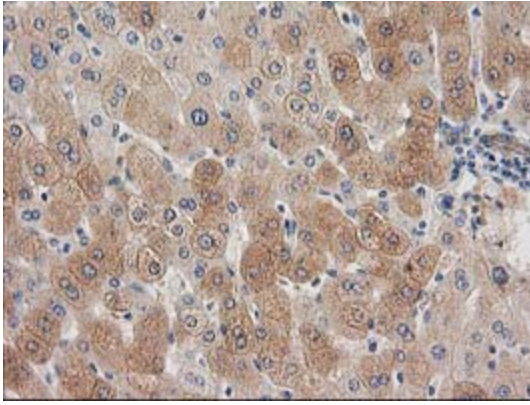
SNARE interactions in vesicular transport

**Product images:**

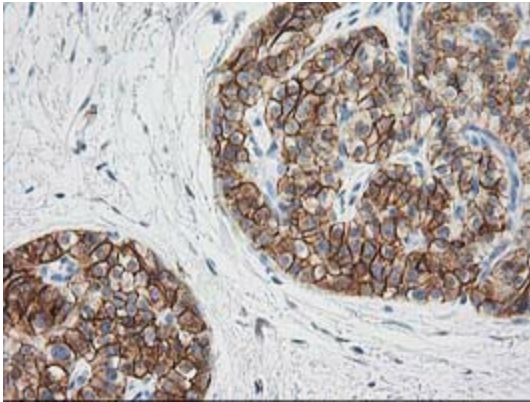
HEK293T cells were transfected with the pCMV6-ENTRY control (Left lane) or pCMV6-ENTRY SNAP25 ([RC202068], Right lane) cDNA for 48 hrs and lysed. Equivalent amounts of cell lysates (5 ug per lane) were separated by SDS-PAGE and immunoblotted with anti-SNAP25. Positive lysates [LY418912] (100ug) and [LC418912] (20ug) can be purchased separately from OriGene.



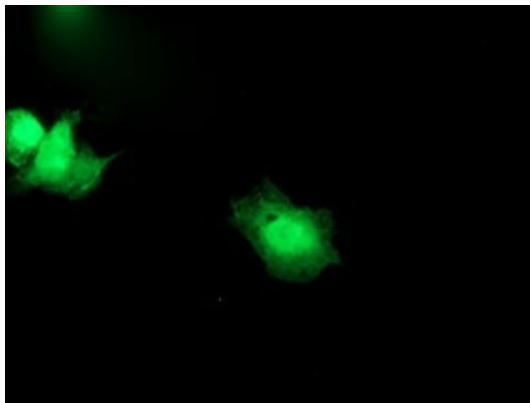
Immunohistochemical staining of paraffin-embedded Human Kidney tissue within the normal limits using anti-SNAP25 mouse monoclonal antibody. (Heat-induced epitope retrieval by 10mM citric buffer, pH6.0, 100°C for 10min, [TA502965])



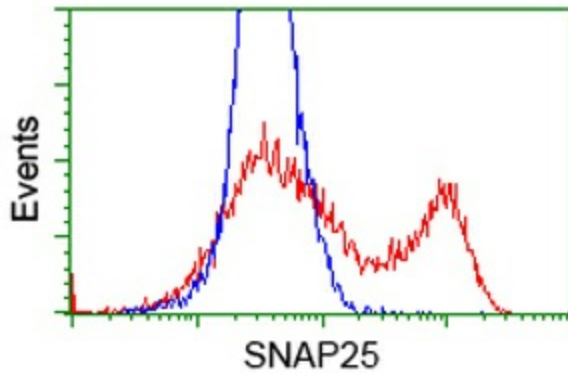
Immunohistochemical staining of paraffin-embedded Human liver tissue within the normal limits using anti-SNAP25 mouse monoclonal antibody. (Heat-induced epitope retrieval by 10mM citric buffer, pH6.0, 100°C for 10min, [TA502965])



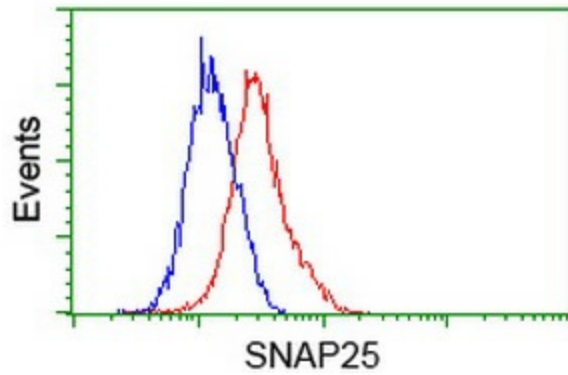
Immunohistochemical staining of paraffin-embedded Carcinoma of Human pancreas tissue using anti-SNAP25 mouse monoclonal antibody. (Heat-induced epitope retrieval by 10mM citric buffer, pH6.0, 100°C for 10min, [TA502965])



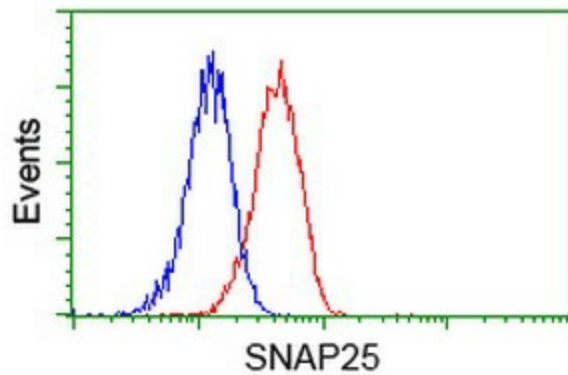
Anti-SNAP25 mouse monoclonal antibody ([TA502965]) immunofluorescent staining of COS7 cells transiently transfected by pCMV6-ENTRY SNAP25 ([RC202068]).



HEK293T cells transfected with either [RC202068] overexpress plasmid (Red) or empty vector control plasmid (Blue) were immunostained by anti-SNAP25 antibody ([TA502965]), and then analyzed by flow cytometry.



Flow cytometric Analysis of HeLa cells, using anti-SNAP25 antibody ([TA502965]), (Red), compared to a nonspecific negative control antibody, (Blue).



Flow cytometric Analysis of Jurkat cells, using anti-SNAP25 antibody ([TA502965]), (Red), compared to a nonspecific negative control antibody, (Blue).