

## Product datasheet for **TA502923AM**

### GRAP2 Mouse Monoclonal Antibody (Biotin conjugated) [Clone ID: OTI1G2]

#### Product data:

Product Type:	Primary Antibodies
Clone Name:	OTI1G2
Applications:	FC, IHC, WB
Recommended Dilution:	WB 1:500~2000, IHC 1:150, FLOW 1:100
Reactivity:	Human, Mouse, Rat
Host:	Mouse
Isotype:	IgG1
Clonality:	Monoclonal
Immunogen:	Full length human recombinant protein of human GRAP2(NP_004801) produced in HEK293T cell.
Formulation:	PBS (pH 7.3) containing 1% BSA, 50% glycerol and 0.02% sodium azide.
Concentration:	0.5 mg/ml
Purification:	Purified from mouse ascites fluids or tissue culture supernatant by affinity chromatography (protein A/G)
Conjugation:	Biotin
Storage:	Store at -20°C as received.
Stability:	Stable for 12 months from date of receipt.
Predicted Protein Size:	37.7 kDa
Gene Name:	GRB2 related adaptor protein 2
Database Link:	<a href="#">NP_004801</a> <a href="#">Entrez Gene 17444 Mouse</a> <a href="#">Entrez Gene 366962 Rat</a> <a href="#">Entrez Gene 9402 Human</a> <a href="#">O75791</a>
Background:	This gene encodes a member of the GRB2/Sem5/Drk family. This member is an adaptor-like protein involved in leukocyte-specific protein-tyrosine kinase signaling. Like its related family member, GRB2-related adaptor protein (GRAP), this protein contains an SH2 domain flanked by two SH3 domains. This protein interacts with other proteins, such as GRB2-associated binding protein 1 (GAB1) and the SLP-76 leukocyte protein (LCP2), through its SH3 domains. Transcript variants utilizing alternative polyA sites exist. [provided by RefSeq]



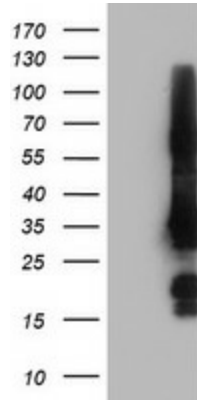
[View online »](#)

**Synonyms:** GADS; GRAP-2; GRB2L; GRBLG; GrbX; Grf40; GRID; GRPL; Mona; P38

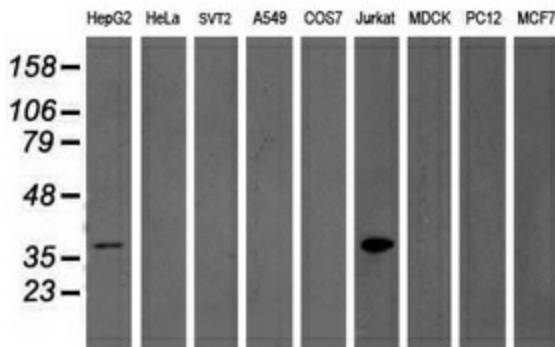
**Protein Families:** Druggable Genome

**Protein Pathways:** T cell receptor signaling pathway

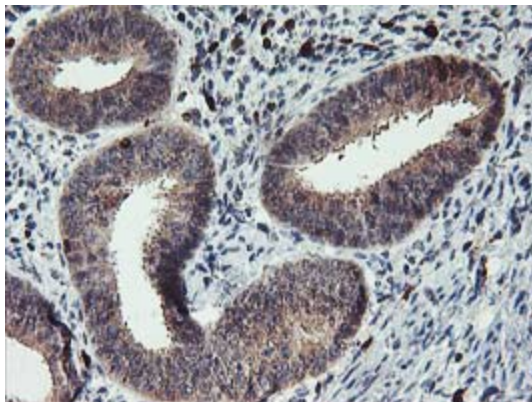
**Product images:**



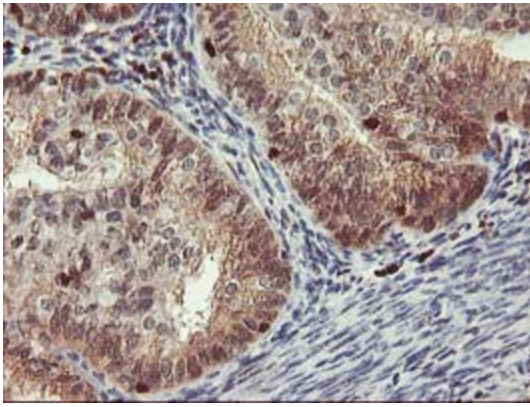
HEK293T cells were transfected with the pCMV6-ENTRY control (Cat# [PS100001], Left lane) or pCMV6-ENTRY GRAP2 (Cat# [RC206546], Right lane) cDNA for 48 hrs and lysed. Equivalent amounts of cell lysates (5 ug per lane) were separated by SDS-PAGE and immunoblotted with anti-GRAP2(Cat# [TA502923]). Positive lysates [LY401511] (100ug) and [LC401511] (20ug) can be purchased separately from OriGene.



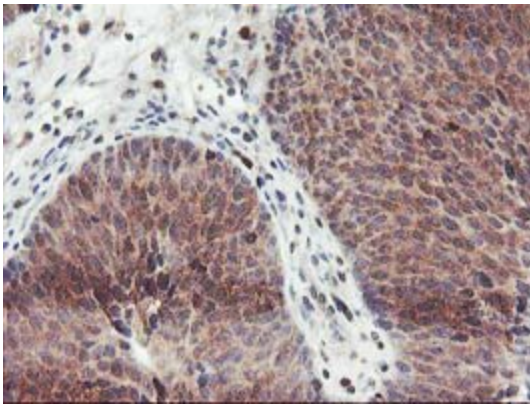
Western blot analysis of extracts (35ug) from 9 different cell lines by using anti-GRAP2 monoclonal antibody.



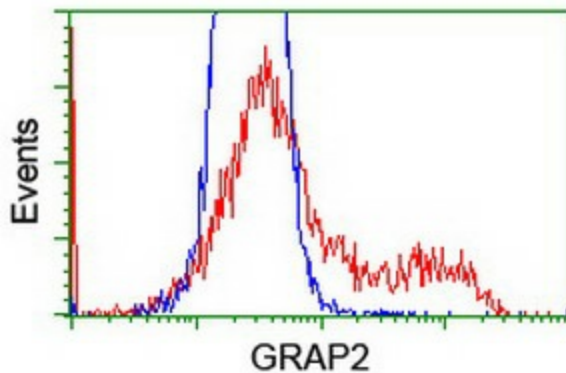
Immunohistochemical staining of paraffin-embedded Human endometrium tissue within the normal limits using anti-GRAP2 mouse monoclonal antibody. (Heat-induced epitope retrieval by 10mM citric buffer, pH6.0, 100°C for 10min, [TA502923])



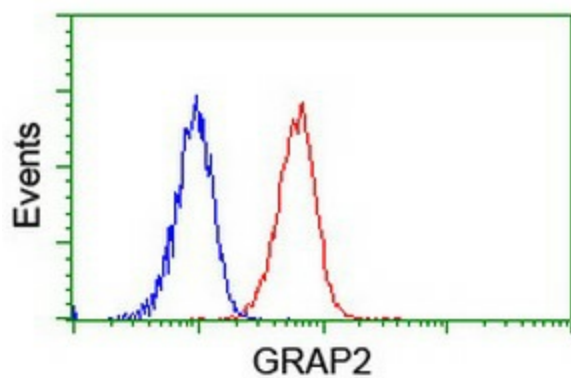
Immunohistochemical staining of paraffin-embedded Adenocarcinoma of Human endometrium tissue using anti-GRAP2 mouse monoclonal antibody. (Heat-induced epitope retrieval by 10mM citric buffer, pH6.0, 100°C for 10min, [TA502923])



Immunohistochemical staining of paraffin-embedded Carcinoma of Human bladder tissue using anti-GRAP2 mouse monoclonal antibody. (Heat-induced epitope retrieval by 10mM citric buffer, pH6.0, 100°C for 10min, [TA502923])



HEK293T cells transfected with either [RC206546] overexpress plasmid (Red) or empty vector control plasmid (Blue) were immunostained by anti-GRAP2 antibody ([TA502923]), and then analyzed by flow cytometry.



Flow cytometric Analysis of Jurkat cells, using anti-GRAP2 antibody ([TA502923]), (Red), compared to a nonspecific negative control antibody, (Blue).