

Product datasheet for **TA502408S**

beta Catenin (CTNNB1) Mouse Monoclonal Antibody [Clone ID: OTI9C1]

Product data:

Product Type:	Primary Antibodies
Clone Name:	OTI9C1
Applications:	IF, IHC, WB
Recommended Dilution:	WB 1:200~2000, IHC 1:150, IF 1:100
Reactivity:	Human, Dog, Rat, Monkey, Mouse
Host:	Mouse
Isotype:	IgG2b
Clonality:	Monoclonal
Immunogen:	Full length human recombinant protein of human CTNNB1(NP_001895) produced in HEK293T cell.
Formulation:	PBS (pH 7.3) containing 1% BSA, 50% glycerol and 0.02% sodium azide.
Concentration:	1 mg/ml
Purification:	Purified from mouse ascites fluids or tissue culture supernatant by affinity chromatography (protein A/G)
Conjugation:	Unconjugated
Storage:	Store at -20°C as received.
Stability:	Stable for 12 months from date of receipt.
Predicted Protein Size:	85.3 kDa
Gene Name:	catenin beta 1
Database Link:	NP_001895 Entrez Gene 12387 Mouse Entrez Gene 84353 Rat Entrez Gene 477032 Dog Entrez Gene 574265 Monkey Entrez Gene 1499 Human P35222



[View online »](#)

Background:

The protein encoded by this gene is part of a complex of proteins that constitute adherens junctions (AJs). AJs are necessary for the creation and maintenance of epithelial cell layers by regulating cell growth and adhesion between cells. The encoded protein also anchors the actin cytoskeleton and may be responsible for transmitting the contact inhibition signal that causes cells to stop dividing once the epithelial sheet is complete. Finally, this protein binds to the product of the APC gene, which is mutated in adenomatous polyposis of the colon. Mutations in this gene are a cause of colorectal cancer (CRC), pilomatrixoma (PTR), medulloblastoma (MDB), and ovarian cancer. Three transcript variants encoding the same protein have been found for this gene. [provided by RefSeq, Oct 2009]

Synonyms:

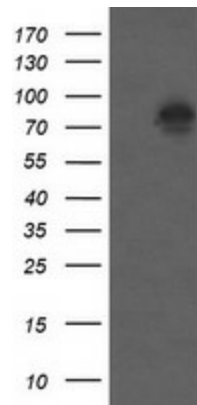
armadillo; CTNNB; MRD19

Protein Families:

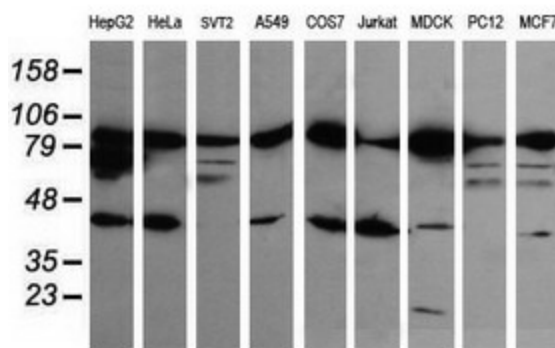
Druggable Genome, ES Cell Differentiation/IPS, Transcription Factors

Protein Pathways:

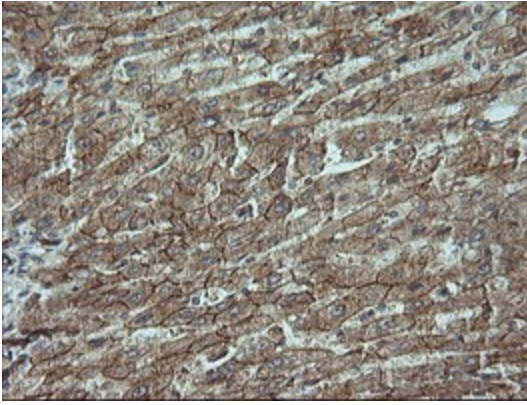
Adherens junction, Arrhythmogenic right ventricular cardiomyopathy (ARVC), Basal cell carcinoma, Colorectal cancer, Endometrial cancer, Focal adhesion, Leukocyte transendothelial migration, Melanogenesis, Pathogenic Escherichia coli infection, Pathways in cancer, Prostate cancer, Thyroid cancer, Tight junction, Wnt signaling pathway

Product images:


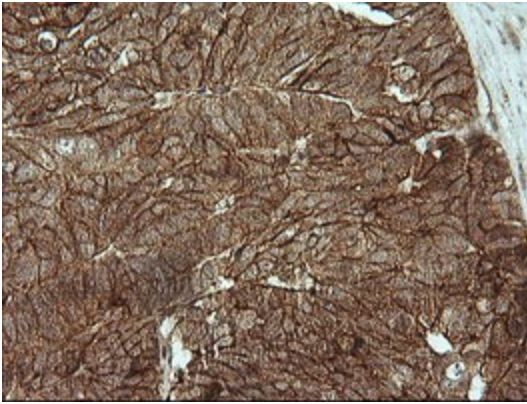
HEK293T cells were transfected with the pCMV6-ENTRY control (Left lane) or pCMV6-ENTRY CTNNB1 ([RC208947], Right lane) cDNA for 48 hrs and lysed. Equivalent amounts of cell lysates (5 ug per lane) were separated by SDS-PAGE and immunoblotted with anti-CTNNB1. Positive lysates [LY419662] (100ug) and [LC419662] (20ug) can be purchased separately from OriGene.



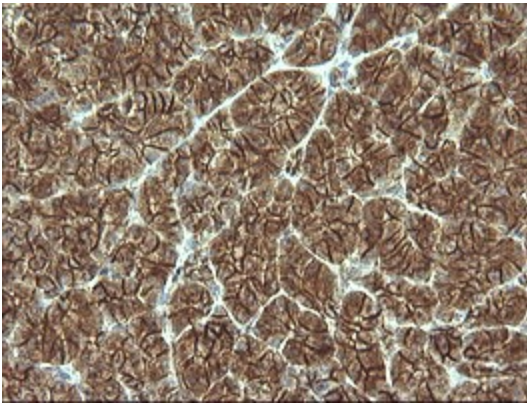
Western blot analysis of extracts (35ug) from 9 different cell lines by using anti-CTNNB1 monoclonal antibody (HepG2: human; HeLa: human; SVT2: mouse; A549: human; COS7: monkey; Jurkat: human; MDCK: canine; PC12: rat; MCF7: human).



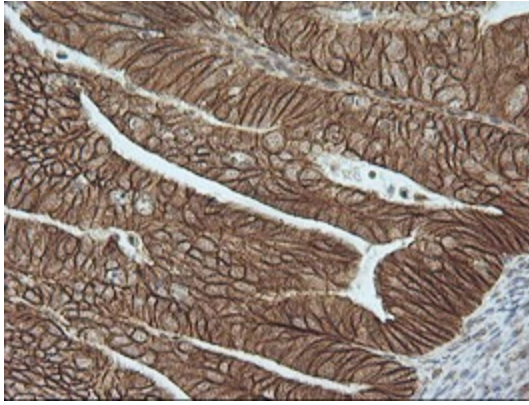
Immunohistochemical staining of paraffin-embedded Human liver tissue within the normal limits using anti-CTNNB1 mouse monoclonal antibody. (Heat-induced epitope retrieval by 10mM citric buffer, pH6.0, 120°C for 3min, [TA502408])



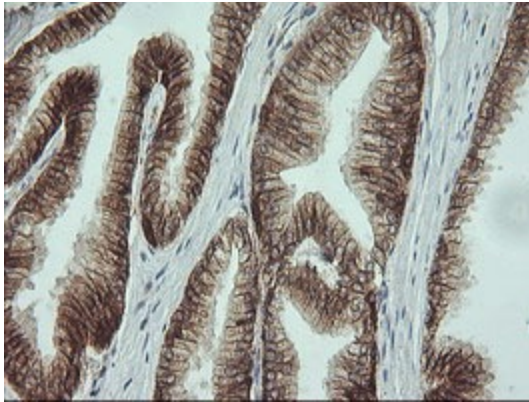
Immunohistochemical staining of paraffin-embedded Adenocarcinoma of Human ovary tissue using anti-CTNNB1 mouse monoclonal antibody. (Heat-induced epitope retrieval by 10mM citric buffer, pH6.0, 120°C for 3min, [TA502408])



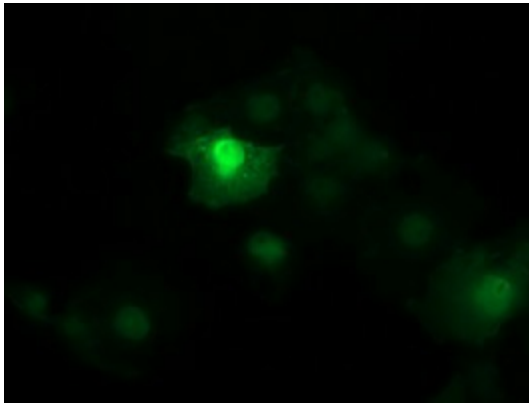
Immunohistochemical staining of paraffin-embedded Human pancreas tissue within the normal limits using anti-CTNNB1 mouse monoclonal antibody. (Heat-induced epitope retrieval by 10mM citric buffer, pH6.0, 120°C for 3min, [TA502408])



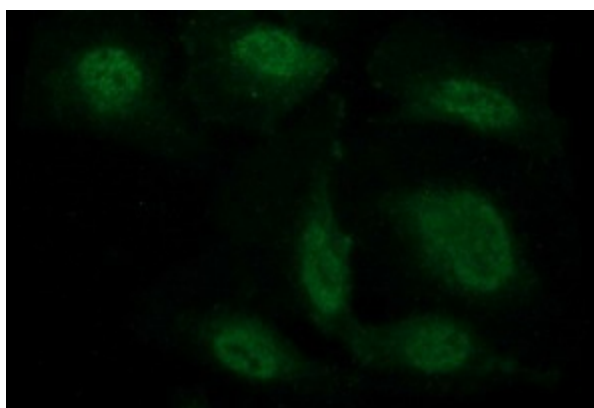
Immunohistochemical staining of paraffin-embedded Adenocarcinoma of Human endometrium tissue using anti-CTNNB1 mouse monoclonal antibody. (Heat-induced epitope retrieval by 10mM citric buffer, pH6.0, 120°C for 3min, [TA502408])



Immunohistochemical staining of paraffin-embedded Human prostate tissue within the normal limits using anti-CTNNB1 mouse monoclonal antibody. (Heat-induced epitope retrieval by 10mM citric buffer, pH6.0, 120°C for 3min, [TA502408])



Anti-CTNNB1 mouse monoclonal antibody ([TA502408]) immunofluorescent staining of COS7 cells transiently transfected by pCMV6-ENTRY CTNNB1 ([RC208947]).



Immunofluorescent staining of HeLa cells using anti-CTNNB1 mouse monoclonal antibody ([TA502408]).