

## Product datasheet for **TA502080S**

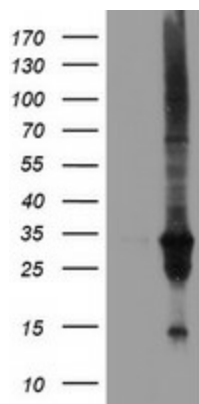
### **DUSP27 (DUPD1) Mouse Monoclonal Antibody [Clone ID: OTI7E4]**

#### **Product data:**

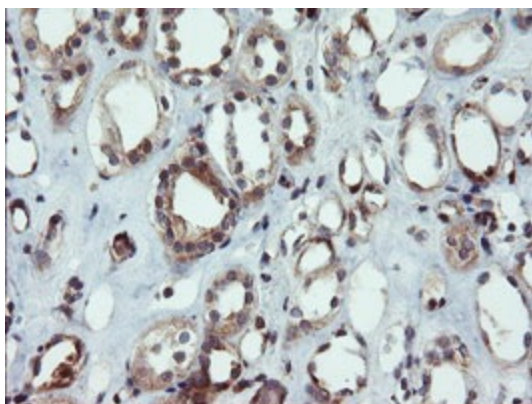
<b>Product Type:</b>	Primary Antibodies
<b>Clone Name:</b>	OTI7E4
<b>Applications:</b>	FC, IHC, WB
<b>Recommended Dilution:</b>	WB 1:2000, IHC 1:150, FLOW 1:100
<b>Reactivity:</b>	Human, Mouse
<b>Host:</b>	Mouse
<b>Isotype:</b>	IgG1
<b>Clonality:</b>	Monoclonal
<b>Immunogen:</b>	Full length human recombinant protein of human DUPD1(NP_001003892) produced in HEK293T cell.
<b>Formulation:</b>	PBS (pH 7.3) containing 1% BSA, 50% glycerol and 0.02% sodium azide.
<b>Concentration:</b>	1.1 mg/ml
<b>Purification:</b>	Purified from mouse ascites fluids or tissue culture supernatant by affinity chromatography (protein A/G)
<b>Conjugation:</b>	Unconjugated
<b>Storage:</b>	Store at -20°C as received.
<b>Stability:</b>	Stable for 12 months from date of receipt.
<b>Predicted Protein Size:</b>	25.2 kDa
<b>Gene Name:</b>	dual specificity phosphatase 29
<b>Database Link:</b>	<a href="#">NP_001003892</a> <a href="#">Entrez Gene 338599 Human</a> <a href="#">Q68J44</a>
<b>Synonyms:</b>	DUSP27; FMDSP
<b>Protein Families:</b>	Phosphatase



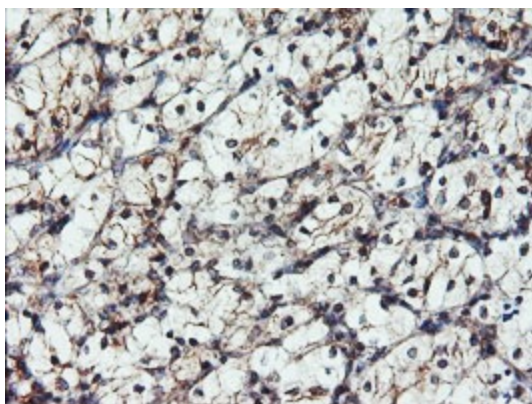
[View online »](#)

**Product images:**

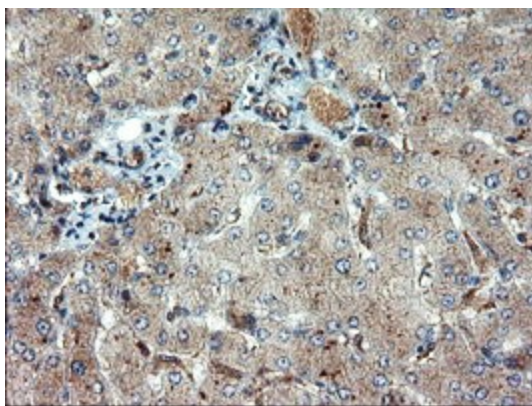
HEK293T cells were transfected with the pCMV6-ENTRY control (Cat# [PS100001], Left lane) or pCMV6-ENTRY DUPD1 (Cat# [RC214361], Right lane) cDNA for 48 hrs and lysed. Equivalent amounts of cell lysates (5 ug per lane) were separated by SDS-PAGE and immunoblotted with anti-DUPD1 (Cat# [TA502080]). Positive lysates [LY424030] (100ug) and [LC424030] (20ug) can be purchased separately from OriGene.



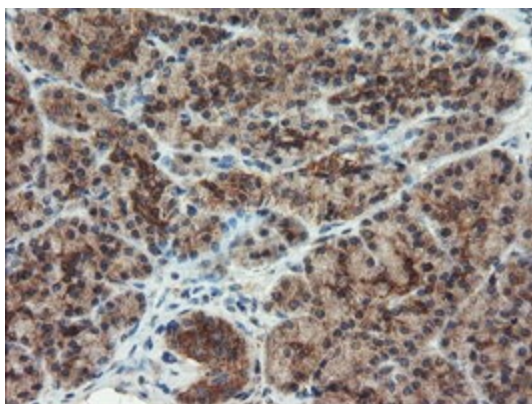
Immunohistochemical staining of paraffin-embedded Human Kidney tissue within the normal limits using anti-DUPD1 mouse monoclonal antibody. (Heat-induced epitope retrieval by 10mM citric buffer, pH6.0, 100°C for 10min, [TA502080])



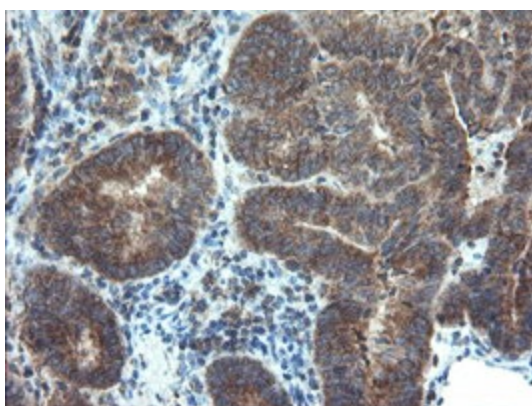
Immunohistochemical staining of paraffin-embedded Carcinoma of Human kidney tissue using anti-DUPD1 mouse monoclonal antibody. (Heat-induced epitope retrieval by 10mM citric buffer, pH6.0, 100°C for 10min, [TA502080])



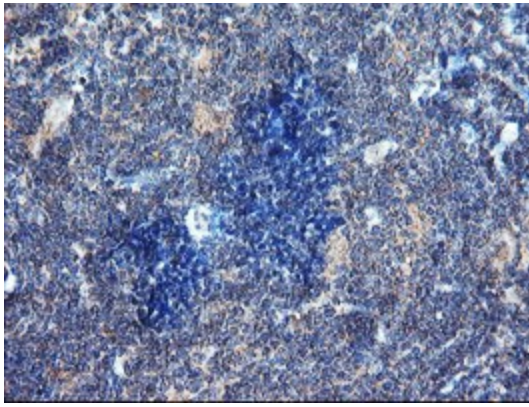
Immunohistochemical staining of paraffin-embedded Human liver tissue within the normal limits using anti-DUPD1 mouse monoclonal antibody. (Heat-induced epitope retrieval by 10mM citric buffer, pH6.0, 100°C for 10min, [TA502080])



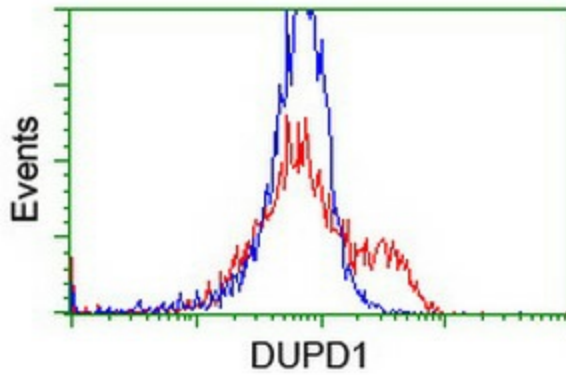
Immunohistochemical staining of paraffin-embedded Human pancreas tissue within the normal limits using anti-DUPD1 mouse monoclonal antibody. (Heat-induced epitope retrieval by 10mM citric buffer, pH6.0, 100°C for 10min, [TA502080])



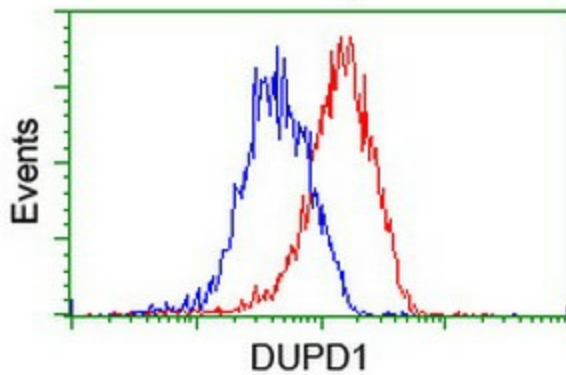
Immunohistochemical staining of paraffin-embedded Adenocarcinoma of Human endometrium tissue using anti-DUPD1 mouse monoclonal antibody. (Heat-induced epitope retrieval by 10mM citric buffer, pH6.0, 100°C for 10min, [TA502080])



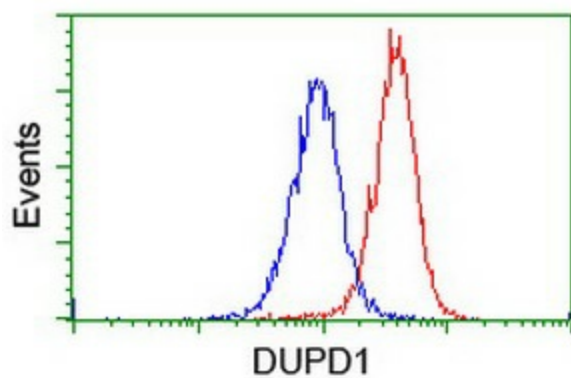
Immunohistochemical staining of paraffin-embedded Human lymphoma tissue using anti-DUPD1 mouse monoclonal antibody. (Heat-induced epitope retrieval by 10mM citric buffer, pH6.0, 100°C for 10min, [TA502080])



HEK293T cells transfected with either [RC214361] overexpress plasmid (Red) or empty vector control plasmid (Blue) were immunostained by anti-DUPD1 antibody ([TA502080]), and then analyzed by flow cytometry.



Flow cytometric Analysis of HeLa cells, using anti-DUPD1 antibody ([TA502080]), (Red), compared to a nonspecific negative control antibody, (Blue).



Flow cytometric Analysis of Jurkat cells, using anti-DUPD1 antibody ([TA502080]), (Red), compared to a nonspecific negative control antibody, (Blue).