

## Product datasheet for **TA501989BM**

### **KEAP1 Mouse Monoclonal Antibody (HRP conjugated) [Clone ID: OTI1G2]**

#### **Product data:**

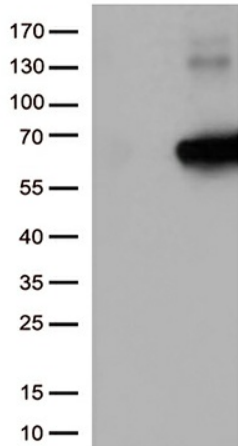
<b>Product Type:</b>	Primary Antibodies
<b>Clone Name:</b>	OTI1G2
<b>Applications:</b>	FC, IF, WB
<b>Recommended Dilution:</b>	WB 1:2000, IF 1:100, FLOW 1:100
<b>Reactivity:</b>	Human, Mouse, Rat
<b>Host:</b>	Mouse
<b>Isotype:</b>	IgG1
<b>Clonality:</b>	Monoclonal
<b>Immunogen:</b>	Full length human recombinant protein of human KEAP1 (NP_987096) produced in HEK293T cell.
<b>Formulation:</b>	PBS (pH 7.3) containing 1% BSA, 50% glycerol.
<b>Concentration:</b>	0.5 mg/ml
<b>Purification:</b>	Purified from mouse ascites fluids or tissue culture supernatant by affinity chromatography (protein A/G)
<b>Conjugation:</b>	HRP
<b>Storage:</b>	Store at -20°C as received.
<b>Stability:</b>	Stable for 12 months from date of receipt.
<b>Predicted Protein Size:</b>	69.5 kDa
<b>Gene Name:</b>	kelch like ECH associated protein 1
<b>Database Link:</b>	<a href="#">NP_987096</a> <a href="#">Entrez Gene 50868 Mouse</a> <a href="#">Entrez Gene 117519 Rat</a> <a href="#">Entrez Gene 9817 Human</a> <a href="#">Q14145</a>
<b>Background:</b>	This gene encodes a protein containing KELCH-1 like domains, as well as a BTB/POZ domain. Kelch-like ECH-associated protein 1 interacts with NF-E2-related factor 2 in a redox-sensitive manner and the dissociation of the proteins in the cytoplasm is followed by transportation of NF-E2-related factor 2 to the nucleus. This interaction results in the expression of the catalytic subunit of gamma-glutamylcysteine synthetase. Two alternatively spliced transcript variants encoding the same isoform have been found for this gene. [provided by RefSeq]



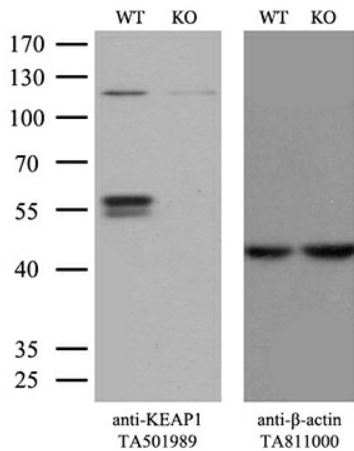
[View online »](#)

**Synonyms:** INrf2; KLHL19  
**Protein Families:** Transcription Factors  
**Protein Pathways:** Ubiquitin mediated proteolysis

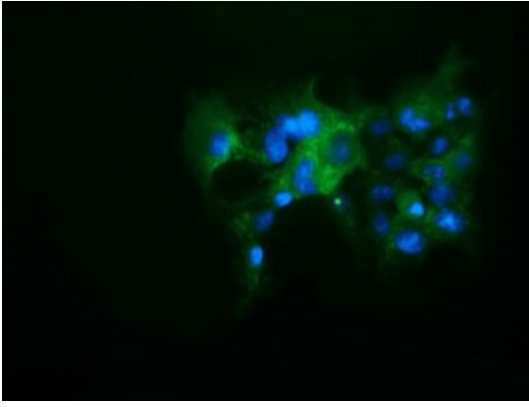
**Product images:**



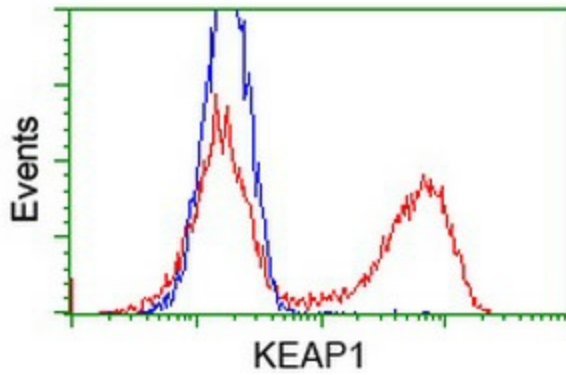
HEK293T cells were transfected with the pCMV6-ENTRY control (Left lane) or pCMV6-ENTRY KEAP1 [RC202189], Right lane) cDNA for 48 hrs and lysed. Equivalent amounts of cell lysates (5 ug per lane) were separated by SDS-PAGE and immunoblotted with anti-KEAP1 (1:1000).



Equivalent amounts of cell lysates (10 ug per lane) of wild-type HeLa cells (WT, Cat# LC810HELA) and KEAP1-Knockout HeLa cells (KO, Cat# [LC810295]) were separated by SDS-PAGE and immunoblotted with anti-KEAP1 monoclonal antibody [TA501989]. Then the blotted membrane was stripped and reprobed with anti- $\beta$ -actin antibody ([TA811000]) as a loading control (1:200).



Anti-KEAP1 mouse monoclonal antibody ([TA501989]) immunofluorescent staining of COS7 cells transiently transfected by pCMV6-ENTRY KEAP1 ([RC202189]).



HEK293T cells transfected with either [RC202189] overexpress plasmid (Red) or empty vector control plasmid (Blue) were immunostained by anti-KEAP1 antibody ([TA501989]), and then analyzed by flow cytometry.