

Product datasheet for **TA501830BM**

Glutathione S Transferase theta 2 (GSTT2) Mouse Monoclonal Antibody (HRP conjugated) [Clone ID: OTI6B7]

Product data:

Product Type:	Primary Antibodies
Clone Name:	OTI6B7
Applications:	FC, IHC, WB
Recommended Dilution:	WB: 1:2000, FLOW: 1:100, IHC: 1:50-1:150
Reactivity:	Human
Host:	Mouse
Isotype:	IgG2b
Clonality:	Monoclonal
Immunogen:	Full length human recombinant protein of human GSTT2 (NP_000845) produced in HEK293T cell.
Formulation:	PBS (pH 7.3) containing 1% BSA, 50% glycerol.
Concentration:	0.5 mg/ml
Purification:	Purified from mouse ascites fluids or tissue culture supernatant by affinity chromatography (protein A/G)
Conjugation:	HRP
Storage:	Store at -20°C as received.
Stability:	Stable for 12 months from date of receipt.
Predicted Protein Size:	27.3 kDa
Gene Name:	glutathione S-transferase theta 2 (gene/pseudogene)
Database Link:	NP_000845 Entrez Gene 2953 Human POCG29



[View online »](#)

Background:

Glutathione S-transferase (GSTs) theta 2 (GSTT2) is a member of a superfamily of proteins that catalyze the conjugation of reduced glutathione to a variety of electrophilic and hydrophobic compounds. Human GSTs can be divided into five main classes: Alpha, Mu, Pi, Theta, and Zeta. The theta class members GSTT1 and GSTT2 share 55% amino acid sequence identity and both are thought to have an important role in human carcinogenesis. The theta genes have a similar structure, being composed of five exons with identical exon/intron boundaries. (provided by RefSeq)

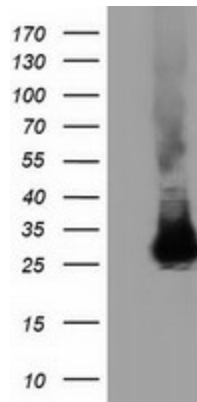
Synonyms:

GSTT2B

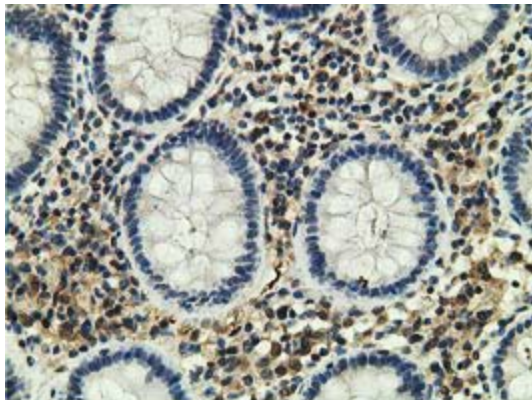
Protein Pathways:

Drug metabolism - cytochrome P450, Glutathione metabolism, Metabolism of xenobiotics by cytochrome P450

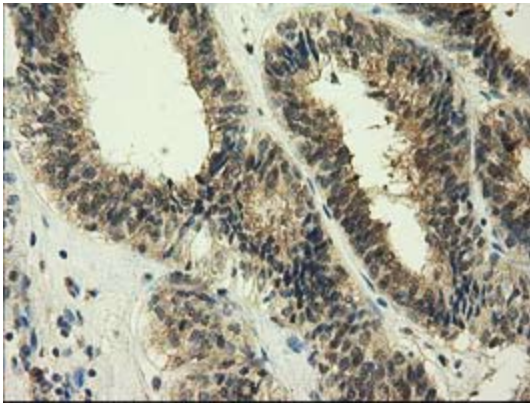
Product images:



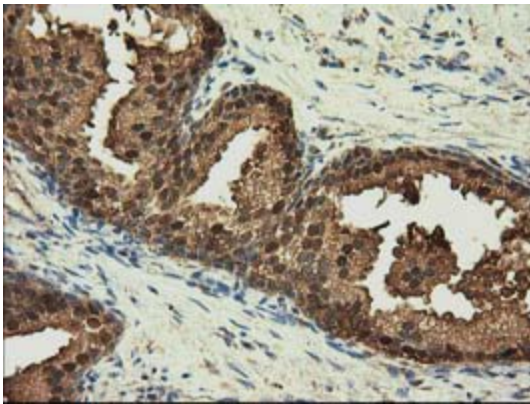
HEK293T cells were transfected with the pCMV6-ENTRY control (Left lane) or pCMV6-ENTRY GSTT2 ([RC200040], Right lane) cDNA for 48 hrs and lysed. Equivalent amounts of cell lysates (5 ug per lane) were separated by SDS-PAGE and immunoblotted with anti-GSTT2. Positive lysates [LY424485] (100ug) and [LC424485] (20ug) can be purchased separately from OriGene.



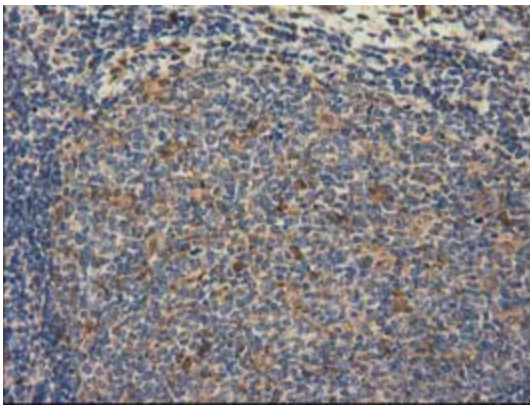
Immunohistochemical staining of paraffin-embedded Human colon tissue within the normal limits using anti-GSTT2 mouse monoclonal antibody at 1:150 ([TA501830])



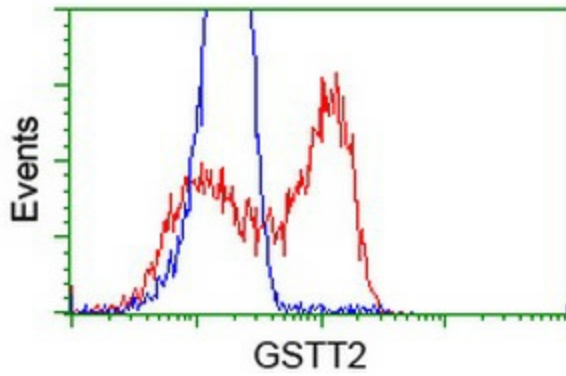
Immunohistochemical staining of paraffin-embedded Adenocarcinoma of Human endometrium tissue using anti-GSTT2 mouse monoclonal antibody at 1:150 ([TA501830])



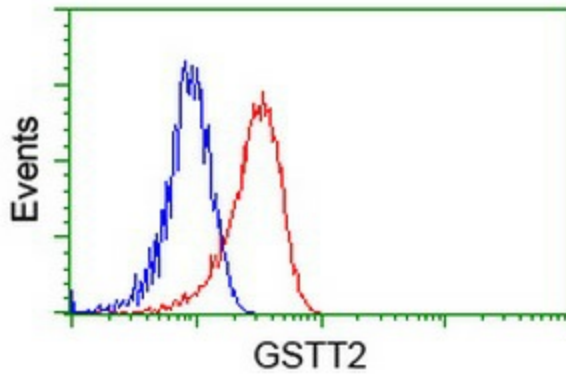
Immunohistochemical staining of paraffin-embedded Human prostate tissue within the normal limits using anti-GSTT2 mouse monoclonal antibody at 1:150 ([TA501830])



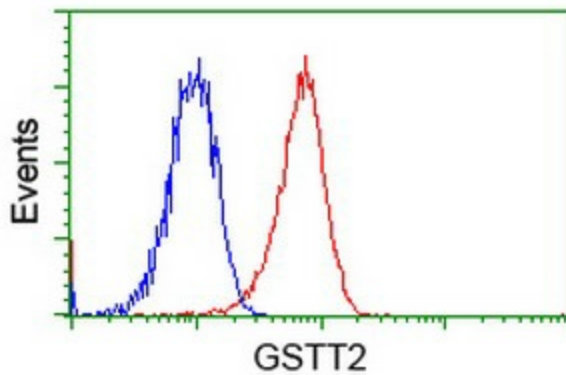
Immunohistochemical staining of paraffin-embedded Human lymph node tissue within the normal limits using anti-GSTT2 mouse monoclonal antibody at 1:150 ([TA501830])



HEK293T cells transfected with either [RC200040] overexpress plasmid (Red) or empty vector control plasmid (Blue) were immunostained by anti-GSTT2 antibody ([TA501830]), and then analyzed by flow cytometry.



Flow cytometric Analysis of HeLa cells, using anti-GSTT2 antibody ([TA501830]), (Red), compared to a nonspecific negative control antibody (TA50011), (Blue).



Flow cytometric Analysis of Jurkat cells, using anti-GSTT2 antibody ([TA501830]), (Red), compared to a nonspecific negative control antibody (TA50011), (Blue).