

Product datasheet for **TA501340**

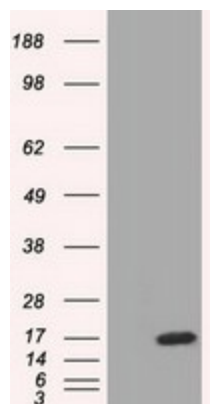
TTC32 Mouse Monoclonal Antibody [Clone ID: OTI1F4]

Product data:

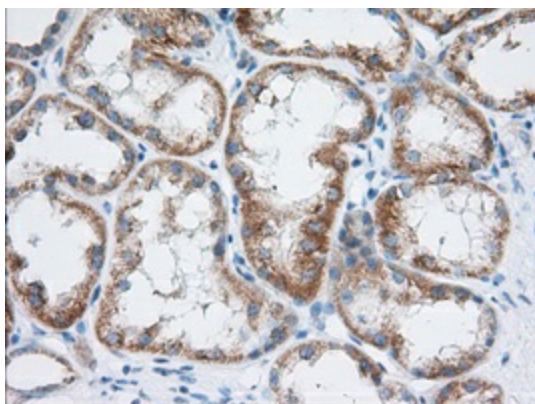
Product Type:	Primary Antibodies
Clone Name:	OTI1F4
Applications:	FC, IF, IHC, WB
Recommended Dilution:	WB 1:500, IHC 1:50, IF 1:100, FLOW 1:100
Reactivity:	Human
Host:	Mouse
Isotype:	IgG1
Clonality:	Monoclonal
Immunogen:	Full length human recombinant protein of human TTC32(NP_001008238) produced in HEK293T cell.
Formulation:	PBS (pH 7.3) containing 1% BSA, 50% glycerol and 0.02% sodium azide.
Concentration:	0.5 mg/ml
Purification:	Purified from mouse ascites fluids or tissue culture supernatant by affinity chromatography (protein A/G)
Conjugation:	Unconjugated
Storage:	Store at -20°C as received.
Stability:	Stable for 12 months from date of receipt.
Predicted Protein Size:	17.1 kDa
Gene Name:	tetratricopeptide repeat domain 32
Database Link:	NP_001008238 Entrez Gene 130502 Human Q5I0X7
Synonyms:	tetratricopeptide repeat domain 32



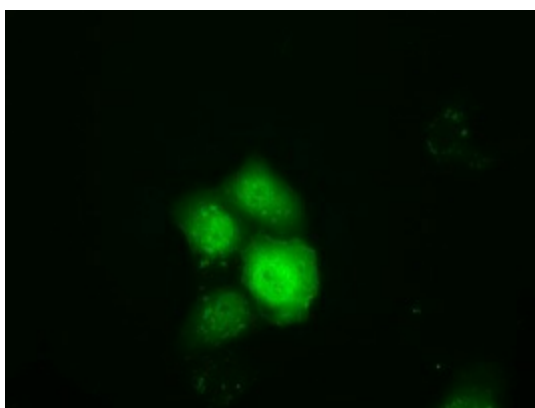
[View online »](#)

Product images:

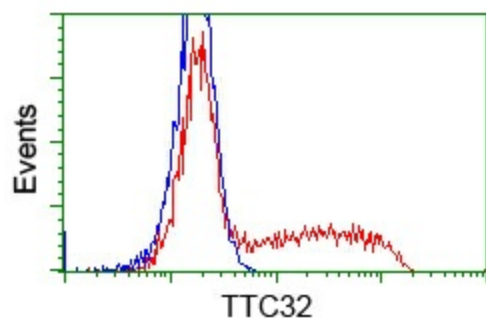
HEK293T cells were transfected with the pCMV6-ENTRY control (Left lane) or pCMV6-ENTRY TTC32 ([RC209334], Right lane) cDNA for 48 hrs and lysed. Equivalent amounts of cell lysates (5 ug per lane) were separated by SDS-PAGE and immunoblotted with anti-TTC32. Positive lysates [LY423407] (100ug) and [LC423407] (20ug) can be purchased separately from OriGene.



Immunohistochemical staining of paraffin-embedded Human Kidney tissue within the normal limits using anti-TTC32 mouse monoclonal antibody. (Heat-induced epitope retrieval by 10mM citric buffer, pH6.0, 100°C for 10min, TA501340, Dilution 1:50)



Anti-TTC32 mouse monoclonal antibody (TA501340) immunofluorescent staining of COS7 cells transiently transfected by pCMV6-ENTRY TTC32 ([RC209334]).



HEK293T cells transfected with either [RC209334] overexpress plasmid (Red) or empty vector control plasmid (Blue) were immunostained by anti-TTC32 antibody (TA501340), and then analyzed by flow cytometry.