

## Product datasheet for **TA501202S**

### **PDE4A Mouse Monoclonal Antibody [Clone ID: OTI6B6]**

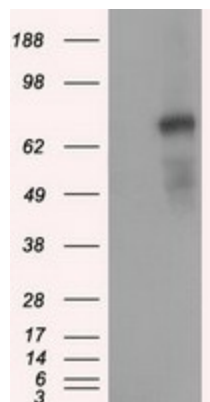
#### **Product data:**

Product Type:	Primary Antibodies
Clone Name:	OTI6B6
Applications:	FC, IF, IHC, WB
Recommended Dilution:	WB 1:4000, IHC 1:50, IF 1:100, Flow 1:100
Reactivity:	Human, Rat
Host:	Mouse
Isotype:	IgG1
Clonality:	Monoclonal
Immunogen:	Full length human recombinant protein of human PDE4A (NP_006193) produced in HEK293T cell.
Formulation:	PBS (pH 7.3) containing 1% BSA, 50% glycerol and 0.02% sodium azide.
Concentration:	1 mg/ml
Purification:	Purified from mouse ascites fluids or tissue culture supernatant by affinity chromatography (protein A/G)
Conjugation:	Unconjugated
Storage:	Store at -20°C as received.
Stability:	Stable for 12 months from date of receipt.
Predicted Protein Size:	72 kDa
Gene Name:	phosphodiesterase 4A
Database Link:	<a href="#">NP_006193</a> <a href="#">Entrez Gene 5141 Human</a> <a href="#">P27815</a>
Background:	Cyclic nucleotides are important second messengers that regulate and mediate a number of cellular responses to extracellular signals, such as hormones, light, and neurotransmitters. Cyclic nucleotide phosphodiesterases (PDEs) regulate the cellular concentrations of cyclic nucleotides and thereby play a role in signal transduction. PDE4A is a class IV cAMP-specific PDE

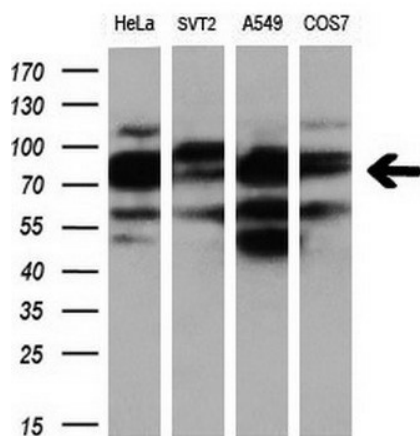
[View online »](#)

**Synonyms:** DPDE2; PDE4; PDE46  
**Protein Families:** Druggable Genome  
**Protein Pathways:** Progesterone-mediated oocyte maturation, Purine metabolism

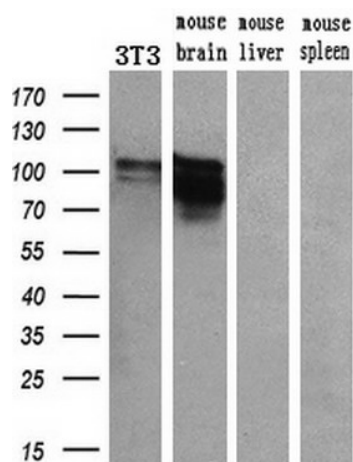
### Product images:



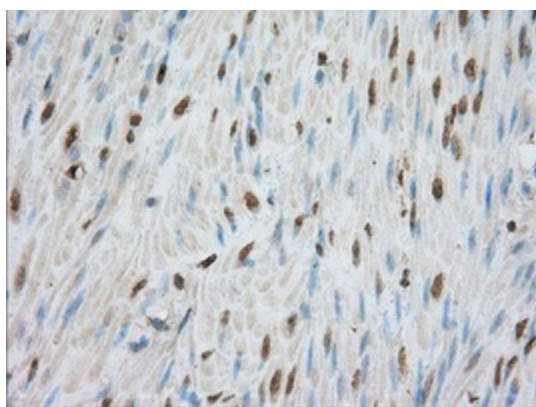
HEK293T cells were transfected with the pCMV6-ENTRY control (Left lane) or pCMV6-ENTRY PDE4A ([RC207765], Right lane) cDNA for 48 hrs and lysed. Equivalent amounts of cell lysates (5 ug per lane) were separated by SDS-PAGE and immunoblotted with anti-PDE4A.



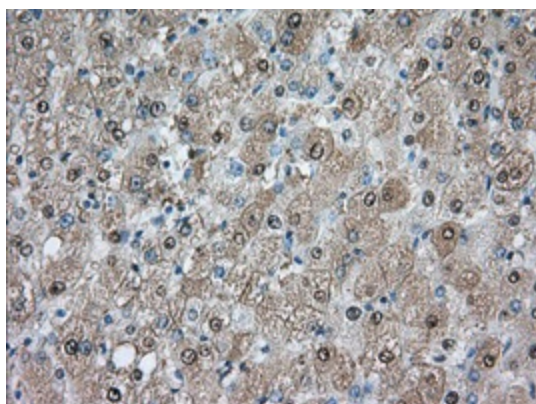
Western blot analysis of extracts (10ug) from 4 different cell lines by using anti-PDE4A monoclonal antibody at 1:200 dilution.



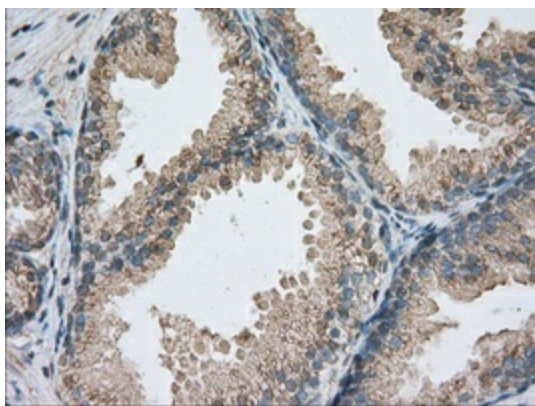
Western blot analysis of extracts (10ug) from a mouse cell line and 3 different mouse tissues by using anti-PDE4A monoclonal antibody (1:200).



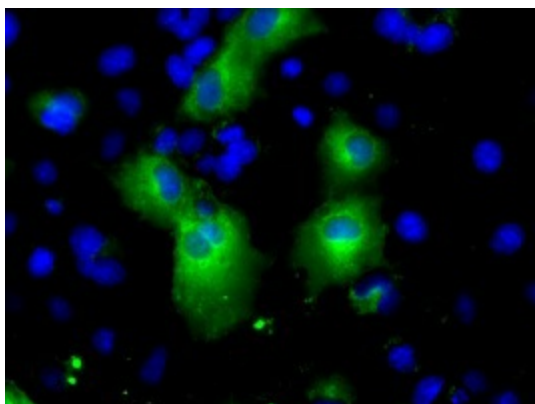
Immunohistochemical staining of paraffin-embedded colon tissue within the normal limits using anti-PDE4A mouse monoclonal antibody. (Heat-induced epitope retrieval by 10mM citric buffer, pH6.0, 100°C for 10min, [TA501202], Dilution 1:50)



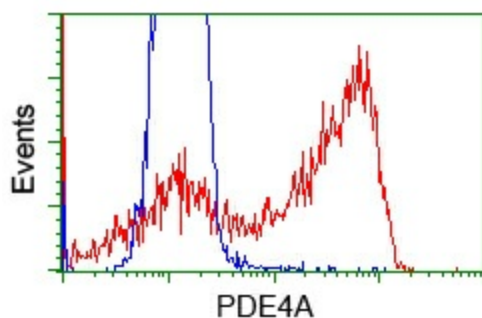
Immunohistochemical staining of paraffin-embedded liver tissue within the normal limits using anti-PDE4A mouse monoclonal antibody. (Heat-induced epitope retrieval by 10mM citric buffer, pH6.0, 100°C for 10min, [TA501202], Dilution 1:50)



Immunohistochemical staining of paraffin-embedded prostate tissue within the normal limits using anti-PDE4A mouse monoclonal antibody. (Heat-induced epitope retrieval by 10mM citric buffer, pH6.0, 100°C for 10min, [TA501202], Dilution 1:50)



Anti-PDE4A mouse monoclonal antibody ([TA501202]) immunofluorescent staining of COS7 cells transiently transfected by pCMV6-ENTRY PDE4A ([RC207765]).



HEK293T cells transfected with either pCMV6-ENTRY PDE4A ([RC207765]) (Red) or empty vector control plasmid (Blue) were immunostained with anti-PDE4A mouse monoclonal ([TA501202]), and then analyzed by flow cytometry.