

## Product datasheet for **TA501189S**

### CD147 (BSG) Mouse Monoclonal Antibody [Clone ID: OTI10E10]

#### Product data:

Product Type:	Primary Antibodies
Clone Name:	OTI10E10
Applications:	FC, IF, WB
Recommended Dilution:	WB 1:500~2000, IF 1:100, FLOW 1:100
Reactivity:	Human, Dog, Rat, Monkey
Host:	Mouse
Isotype:	IgG2b
Clonality:	Monoclonal
Immunogen:	Full length human recombinant protein of human BSG (NP_001719) produced in HEK293T cell.
Formulation:	PBS (pH 7.3) containing 1% BSA, 50% glycerol and 0.02% sodium azide.
Concentration:	1 mg/ml
Purification:	Purified from mouse ascites fluids or tissue culture supernatant by affinity chromatography (protein A/G)
Conjugation:	Unconjugated
Storage:	Store at -20°C as received.
Stability:	Stable for 12 months from date of receipt.
Predicted Protein Size:	40.2 kDa
Gene Name:	basigin (Ok blood group)
Database Link:	<a href="#">NP_001719</a> <a href="#">Entrez Gene 25246 Rat</a> <a href="#">Entrez Gene 476758 Dog</a> <a href="#">Entrez Gene 721068 Monkey</a> <a href="#">Entrez Gene 682 Human</a> <a href="#">P35613</a>
Background:	The protein encoded by this gene is a plasma membrane protein that is important in spermatogenesis, embryo implantation, neural network formation, and tumor progression. The encoded protein is also a member of the immunoglobulin superfamily. Multiple transcript variants encoding different isoforms have been found for this gene. [provided by RefSeq]

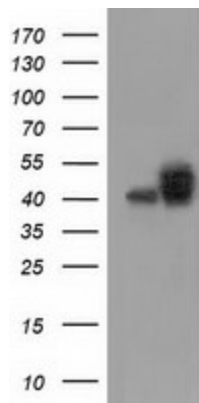


[View online »](#)

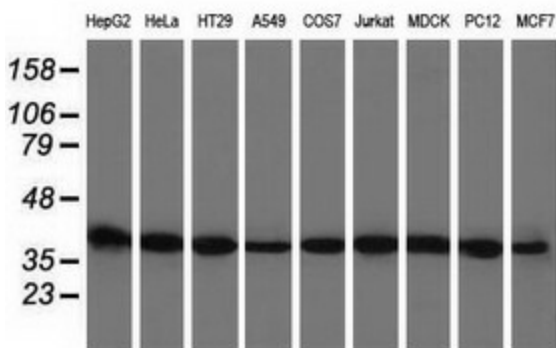
**Synonyms:** 5F7; CD147; EMMPRIN; OK; TCSF

**Protein Families:** Druggable Genome, ES Cell Differentiation/IPS, Transmembrane

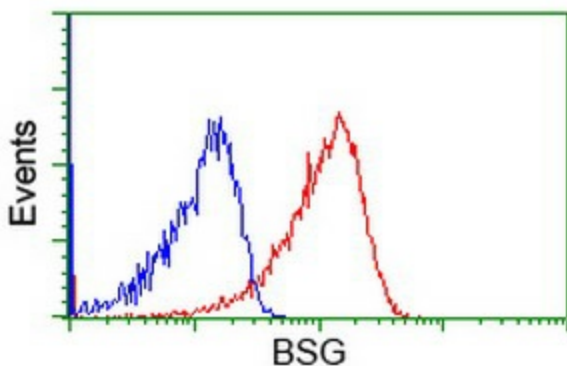
**Product images:**



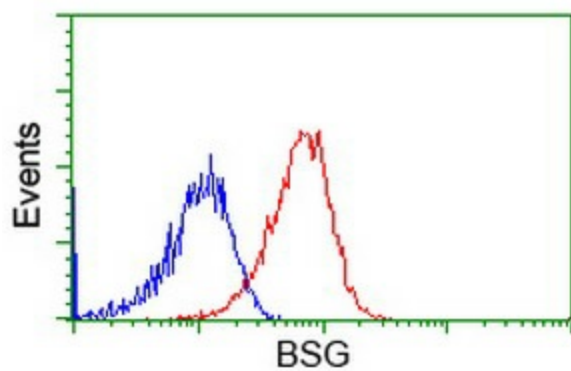
HEK293T cells were transfected with the pCMV6-ENTRY control (Cat# [PS100001], Left lane) or pCMV6-ENTRY BSG (Cat# [RC219464], Right lane) cDNA for 48 hrs and lysed. Equivalent amounts of cell lysates (5 ug per lane) were separated by SDS-PAGE and immunoblotted with anti-BSG (Cat# [TA501189]). Positive lysates [LY419777] (100ug) and [LC419777] (20ug) can be purchased separately from OriGene.



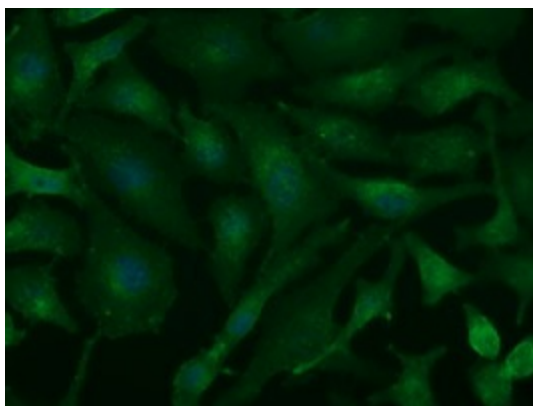
Western blot analysis of extracts (35ug) from 9 different cell lines by using anti-BSG monoclonal antibody.



Flow cytometric Analysis of Jurkat cells, using anti-BSG antibody ([TA501189]), (Red), compared to a nonspecific negative control antibody (TA50011), (Blue).



Flow cytometric Analysis of HeLa cells, using anti-BSG antibody ([TA501189]), (Red), compared to a nonspecific negative control antibody (TA50011), (Blue).



Immunofluorescent staining of HeLa cells using anti-BSG mouse monoclonal antibody ([TA501189]).