

Product datasheet for **TA501053BM**

RDH11 Mouse Monoclonal Antibody (HRP conjugated) [Clone ID: OTI1B4]

Product data:

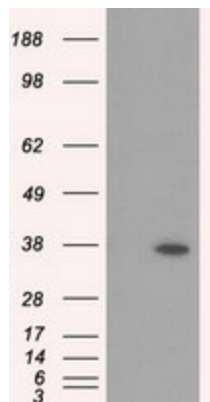
Product Type:	Primary Antibodies
Clone Name:	OTI1B4
Applications:	FC, IF, IHC, WB
Recommended Dilution:	WB 1:2000, IHC 1:50, IF 1:100, Flow 1:100
Reactivity:	Human, Mouse
Host:	Mouse
Isotype:	IgG2a
Clonality:	Monoclonal
Immunogen:	Full length human recombinant protein of human RDH11(NP_057110) produced in HEK293T cell.
Formulation:	PBS (pH 7.3) containing 1% BSA, 50% glycerol.
Concentration:	0.5 mg/ml
Purification:	Purified from mouse ascites fluids or tissue culture supernatant by affinity chromatography (protein A/G)
Conjugation:	HRP
Storage:	Store at -20°C as received.
Stability:	Stable for 12 months from date of receipt.
Predicted Protein Size:	35.2 kDa
Gene Name:	retinol dehydrogenase 11
Database Link:	NP_057110 Entrez Gene 17252 Mouse Entrez Gene 51109 Human Q8TC12
Background:	RHD11, a member of the short-chain dehydrogenase/reductase (SDR) superfamily of oxidoreductases, is expressed at high levels in prostate epithelium, and its expression is regulated by androgens. [supplied by OMIM]. COMPLETENESS: complete on the 3' end.
Synonyms:	ARSDR1; CGI82; HCBP12; MDT1; PSDR1; RALR1; RDJCSS; SCALD; SDR7C1
Protein Families:	Druggable Genome



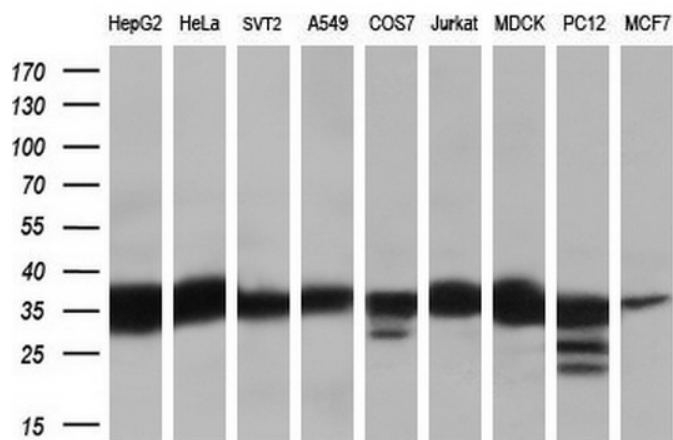
[View online »](#)

Protein Pathways: Metabolic pathways, Retinol metabolism

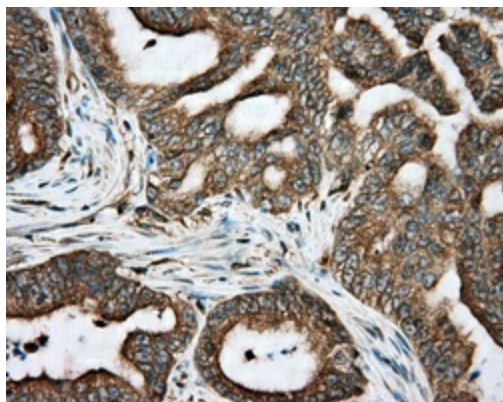
Product images:



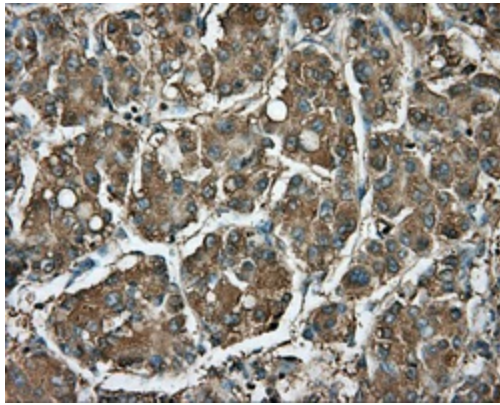
HEK293T cells were transfected with the pCMV6-ENTRY control (Cat# [PS100001], Left lane) or pCMV6-ENTRY RDH11 (Cat# [RC205003], Right lane) cDNA for 48 hrs and lysed. Equivalent amounts of cell lysates (5 ug per lane) were separated by SDS-PAGE and immunoblotted with anti-RDH11(Cat# [TA501053]). Positive lysates [LY402488] (100ug) and [LC402488] (20ug) can be purchased separately from OriGene.



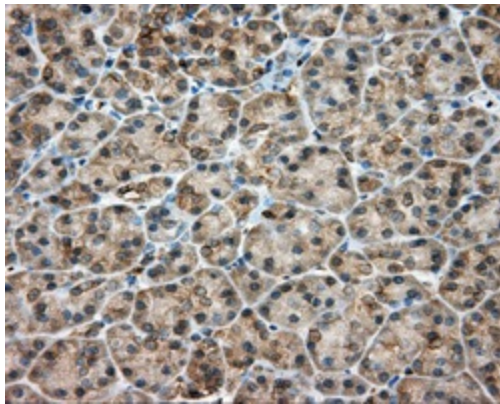
Western blot analysis of extracts (35ug) from 9 different cell lines by using anti-RDH11 monoclonal antibody (HepG2: human; HeLa: human; SVT2: mouse; A549: human; COS7: monkey; Jurkat: human; MDCK: canine; PC12: rat; MCF7: human) (1:200).



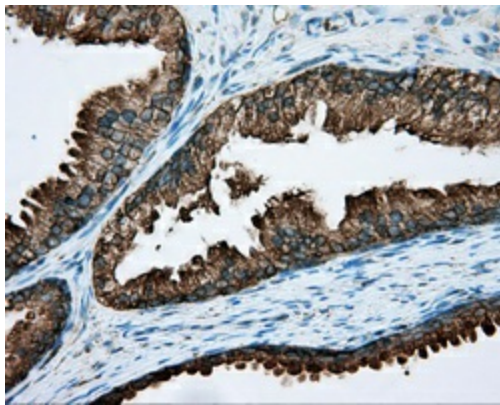
Immunohistochemical staining of paraffin-embedded Adenocarcinoma of colon tissue using anti-RDH11 mouse monoclonal antibody. (Heat-induced epitope retrieval by 10mM citric buffer, pH6.0, 100°C for 10min, [TA501053], Dilution 1:50)



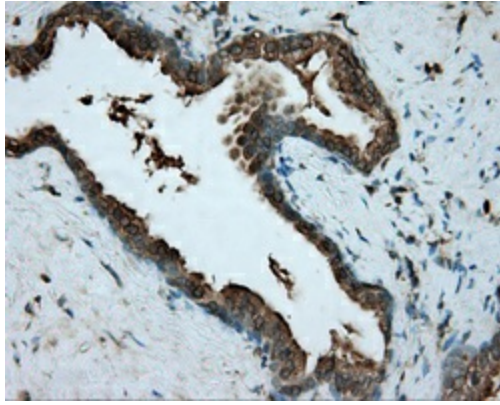
Immunohistochemical staining of paraffin-embedded Carcinoma of liver tissue using anti-RDH11 mouse monoclonal antibody. (Heat-induced epitope retrieval by 10mM citric buffer, pH6.0, 100°C for 10min, [TA501053], Dilution 1:50)



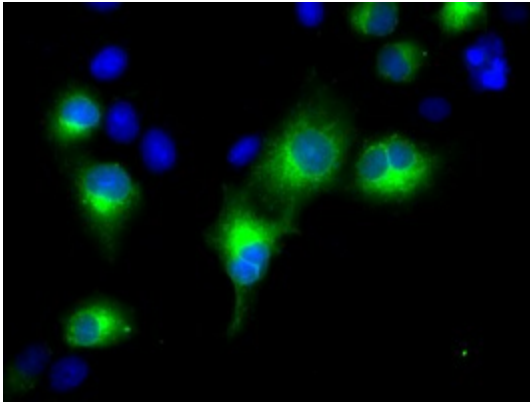
Immunohistochemical staining of paraffin-embedded pancreas tissue within the normal limits using anti-RDH11 mouse monoclonal antibody. (Heat-induced epitope retrieval by 10mM citric buffer, pH6.0, 100°C for 10min, [TA501053], Dilution 1:50)



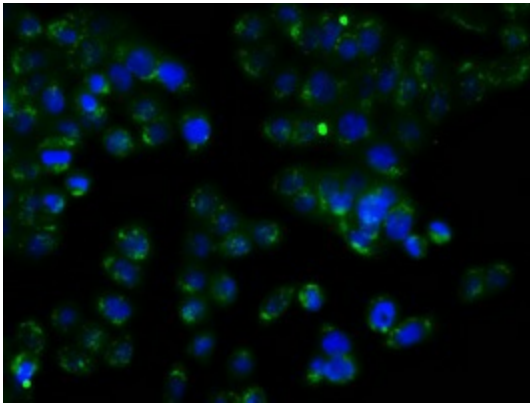
Immunohistochemical staining of paraffin-embedded prostate tissue within the normal limits using anti-RDH11 mouse monoclonal antibody. (Heat-induced epitope retrieval by 10mM citric buffer, pH6.0, 100°C for 10min, [TA501053], Dilution 1:50)



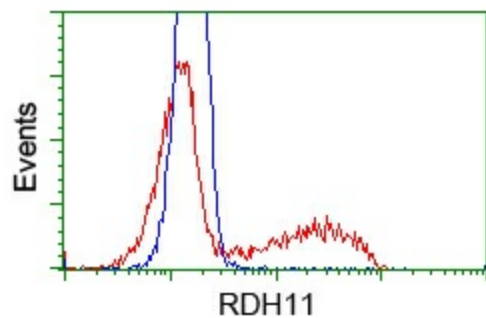
Immunohistochemical staining of paraffin-embedded Carcinoma of prostate tissue using anti-RDH11 mouse monoclonal antibody. (Heat-induced epitope retrieval by 10mM citric buffer, pH6.0, 100°C for 10min, [TA501053], Dilution 1:50)



Anti-RDH11 mouse monoclonal antibody ([TA501053]) immunofluorescent staining of COS7 cells transiently transfected by pCMV6-ENTRY RDH11 ([RC205003]).



Immunofluorescent staining of HT29 cells using anti-RDH11 mouse monoclonal antibody ([TA501053]).



HEK293T cells transfected with either pCMV6-ENTRY RDH11 ([RC205003]) (Red) or empty vector control plasmid (Blue) were immunostained with anti-RDH11 mouse monoclonal ([TA501053]), and then analyzed by flow cytometry.