

Product datasheet for **TA500733**

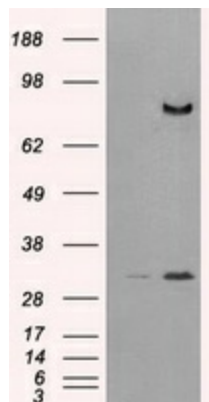
CD26 (DPP4) Mouse Monoclonal Antibody [Clone ID: OTI11D7]

Product data:

| | |
|-------------------------|---|
| Product Type: | Primary Antibodies |
| Clone Name: | OTI11D7 |
| Applications: | FC, IF, IHC, WB |
| Recommended Dilution: | WB 1:500, IHC 1:50, IF 1:100, Flow 1:100 |
| Reactivity: | Human, Mouse, Rat |
| Host: | Mouse |
| Isotype: | IgG1 |
| Clonality: | Monoclonal |
| Immunogen: | Full length human recombinant protein of human DPP4 (NP_001926) produced in HEK293T cell. |
| Formulation: | PBS (pH 7.3) containing 1% BSA, 50% glycerol and 0.02% sodium azide. |
| Concentration: | 1 mg/ml |
| Purification: | Purified from mouse ascites fluids or tissue culture supernatant by affinity chromatography (protein A/G) |
| Conjugation: | Unconjugated |
| Storage: | Store at -20°C as received. |
| Stability: | Stable for 12 months from date of receipt. |
| Predicted Protein Size: | 88.3 kDa |
| Gene Name: | dipeptidyl peptidase 4 |
| Database Link: | NP_001926 Entrez Gene 13482 Mouse Entrez Gene 25253 Rat Entrez Gene 1803 Human P27487 |
| Background: | The protein encoded by this gene is identical to adenosine deaminase complexing protein-2, and to the T-cell activation antigen CD26. It is an intrinsic membrane glycoprotein and a serine exopeptidase that cleaves X-proline dipeptides from the N-terminus of polypeptides. |
| Synonyms: | ADABP; ADCP2; CD26; DPPIV; TP103 |
| Protein Families: | Druggable Genome, Protease, Secreted Protein, Transmembrane |



[View online »](#)

Product images:


HEK293T cells were transfected with the pCMV6-ENTRY control (Cat# [PS100001], Left lane) or pCMV6-ENTRY DPP4 (Cat# [RC209466], Right lane) cDNA for 48 hrs and lysed. Equivalent amounts of cell lysates (5 ug per lane) were separated by SDS-PAGE and immunoblotted with anti-DPP4 (Cat# TA500733). Positive lysates [LY419637] (100ug) and [LC419637] (20ug) can be purchased separately from OriGene.

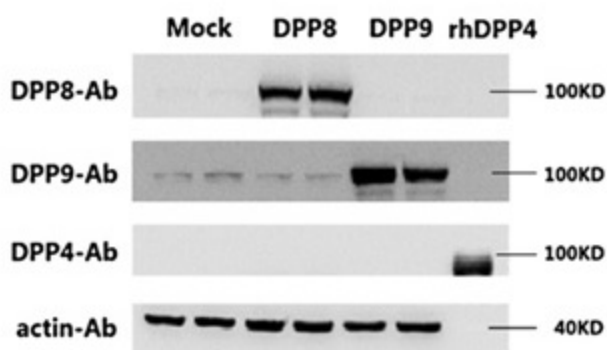


Figure from citation: Western blot analysis of protein levels of DPP4/8/9 in 293E cells transfected with pcDNA3.1 (Mock), pcDNA3.1-hDPP8 (DPP8) and pcDNA3.1-hDPP9 (DPP9), the purified recombinant human DPP4 protein (rhDPP4) was used as a positive control for the DPP4 antibody, antibodies targeting human DPP4/8/9 (TA500733/[TA504366]/[TA504040]) and β -actin ([TA310155]) were purchased from OriGene. [View Citation](#)

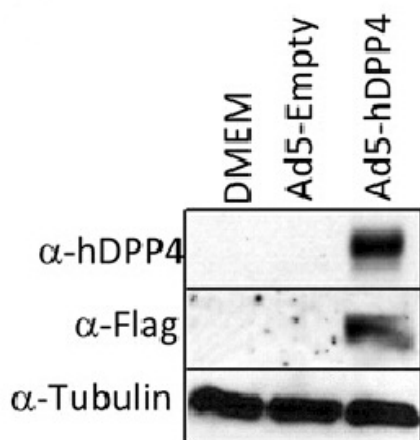
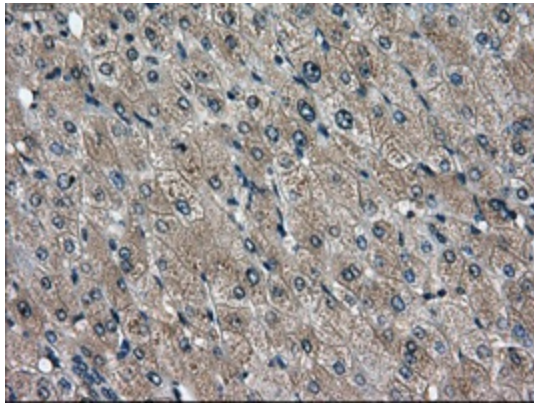


Figure from citation: Western Blot of DPP4 protein level by using anti-DPP4 antibody in mouse MLE15 cells. [View Citation](#)



Immunohistochemical staining of paraffin-embedded liver tissue within the normal limits using anti-DPP4 mouse monoclonal antibody. (Heat-induced epitope retrieval by 10mM citric buffer, pH6.0, 100°C for 10min, TA500733, Dilution 1:50)

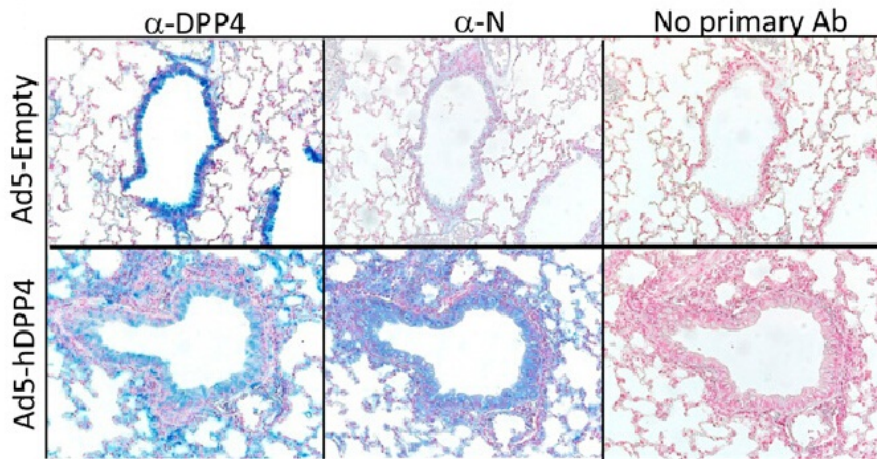
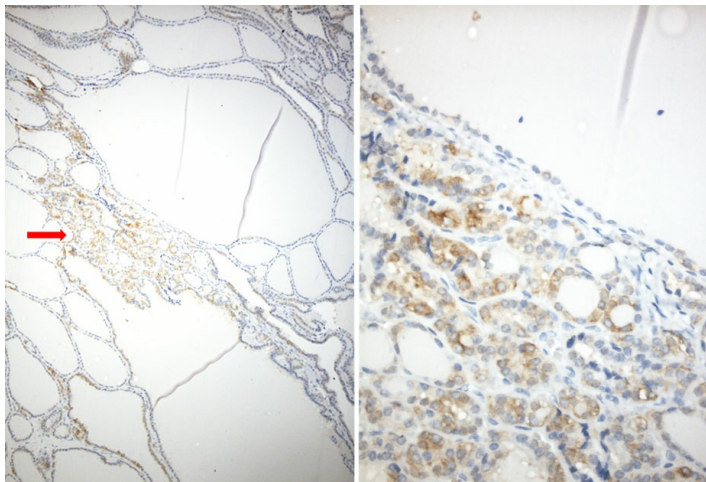
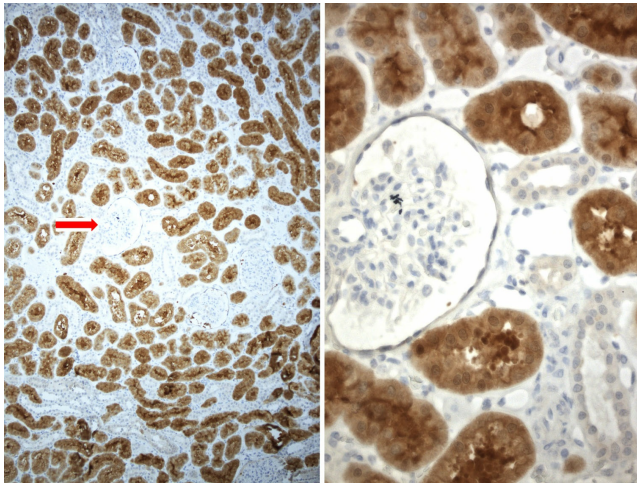


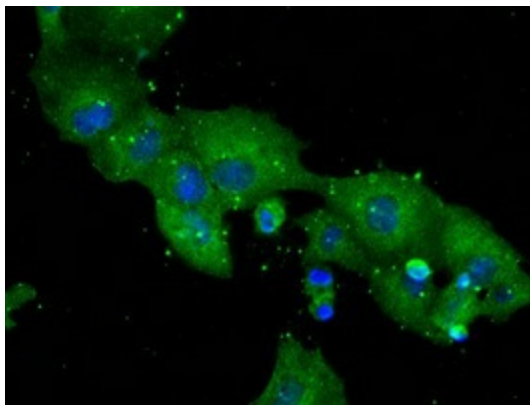
Figure from citation: Immunohistochemistry of DPP4 protein level by using anti-DPP4 antibody in lungs harvested from BALB/c mice at day 3. Dilution: 1:800 [View Citation](#)



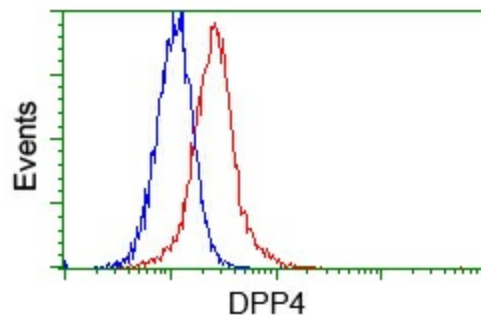
Immunohistochemical staining of paraffin-embedded normal human thyroid tissue using anti-DPP4 C/N TA500733 clone OTI11D7 mouse monoclonal antibody. HIER Citrate buffer pH6 ([B05-100]) at 110C for 10 min, anti-DPP4 diluted to 1:200. Detection was done with Polink1 Broad Mouse and Rabbit C/N [D11-18] with DAB Kit. Image on left is at 10x magnification and image on the right is at 40x magnification of area indicated by red arrow on 10x.



Immunohistochemical staining of paraffin-embedded normal human kidney tissue using anti-DPP4 C/N TA500733 clone OTI11D7 mouse monoclonal antibody. HIER Citrate buffer pH6 ([B05-100]) at 110C for 10 min, anti-DPP4 diluted to 1:100. Detection was done with Polink1 Broad Mouse and Rabbit C/N [D11-18] with DAB Kit. Image on left is at 10x magnification and image on the right is at 40x magnification of area indicated by red arrow on 10x.



Anti-DPP4 mouse monoclonal antibody (TA500733) immunofluorescent staining of COS7 cells transiently transfected by pCMV6-ENTRY DPP4 ([RC209466]).



Flow cytometric analysis of HeLa cells, using anti-DPP4 antibody (TA500733), (Red) compared to a nonspecific negative control antibody (TA50011) (Blue).