

Product datasheet for **TA500673AM**

FKBP51 (FKBP5) Mouse Monoclonal Antibody (Biotin conjugated) [Clone ID: OTI3E9]

Product data:

| | |
|-------------------------|--|
| Product Type: | Primary Antibodies |
| Clone Name: | OTI3E9 |
| Applications: | IF, IHC, WB |
| Recommended Dilution: | WB 1:2000, IHC 1:50, IF 1:100 |
| Reactivity: | Human, Rat |
| Host: | Mouse |
| Isotype: | IgG1 |
| Clonality: | Monoclonal |
| Immunogen: | Full-length protein expressed in 293T cell transfected with human FKBP5 expression vector |
| Formulation: | PBS (pH 7.3) containing 1% BSA, 50% glycerol and 0.02% sodium azide. |
| Concentration: | 0.5 mg/ml |
| Purification: | Purified from mouse ascites fluids or tissue culture supernatant by affinity chromatography (protein A/G) |
| Conjugation: | Biotin |
| Storage: | Store at -20°C as received. |
| Stability: | Stable for 12 months from date of receipt. |
| Predicted Protein Size: | 51.2 kDa |
| Gene Name: | FKBP prolyl isomerase 5 |
| Database Link: | NP_004108 Entrez Gene 361810 Rat Entrez Gene 2289 Human Q13451 |
| Background: | The protein encoded by this gene is a member of the immunophilin protein family, which play a role in immunoregulation and basic cellular processes involving protein folding and trafficking. This encoded protein is a cis-trans prolyl isomerase that binds to the immunosuppressants FK506 and rapamycin. It is thought to mediate calcineurin inhibition. It also interacts functionally with mature hetero-oligomeric progesterone receptor complexes along with the 90 kDa heat shock protein and P23 protein. This gene has been found to have multiple polyadenylation sites. Alternative splicing results in multiple transcript variants. |

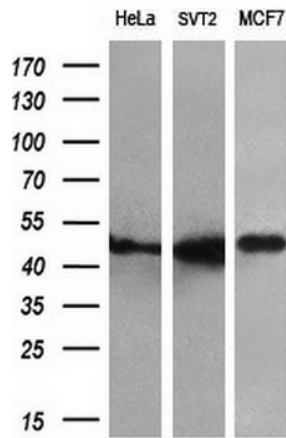


[View online »](#)

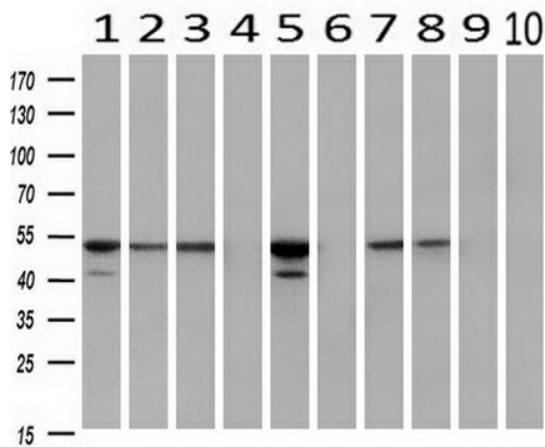
Synonyms: AIG6; FKBP51; FKBP54; P54; PPIase; Ptg-10

Protein Families: Druggable Genome

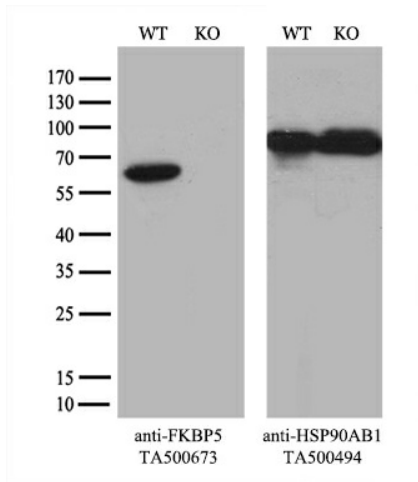
Product images:



Western blot analysis of extracts (10ug) from 3 different cell lines by using anti-FKBP5 monoclonal antibody (1:200).



Western blot analysis of extracts (10ug) from 10 Human tissue by using anti-FKBP5 monoclonal antibody at 1:200 (1: Testis; 2: Omentum; 3: Uterus; 4: Breast; 5: Brain; 6: Liver; 7: Ovary; 8: Thyroid gland; 9: colon; 10: spleen).



Equivalent amounts of cell lysates (10 ug per lane) of wild-type HeLa cells (WT, Cat# LC810HELA) and FKBP5-Knockout HeLa cells (KO, Cat# [LC832231]) were separated by SDS-PAGE and immunoblotted with anti-FKBP5 monoclonal antibody [TA500673] (1:500). Then the blotted membrane was stripped and reprobed with anti-HSP90 antibody as a loading control.

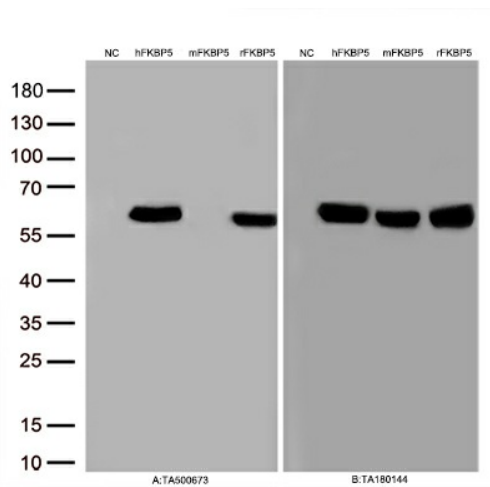
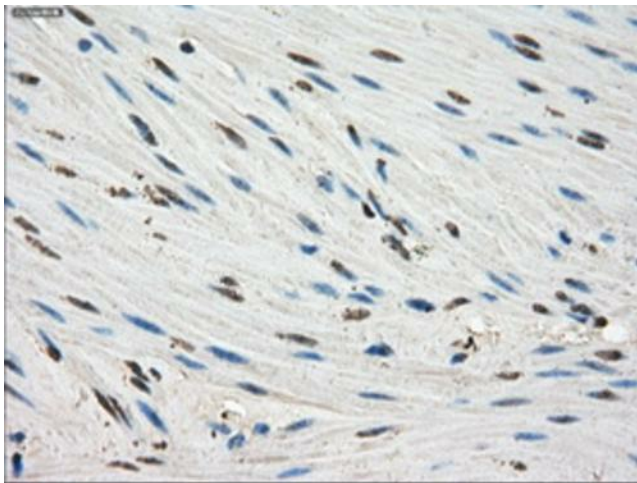
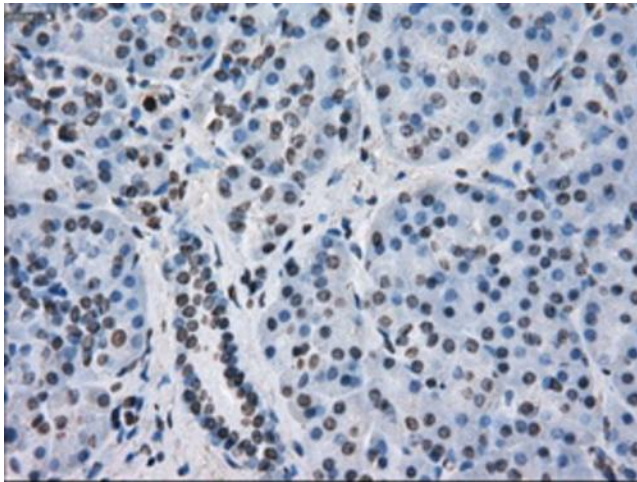


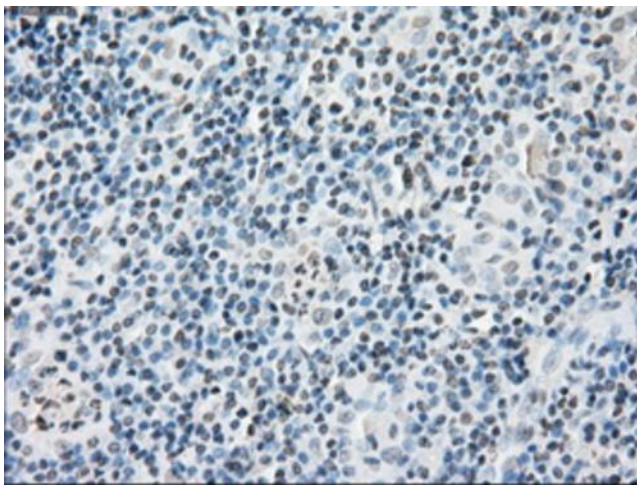
Figure A, Western blot analysis of overexpressed lysates(15ug per lane) from HEK293T cells transfected with empty plasmid ([PS100001], NC), human FKBP5 plasmid ([RC210608], hFKBP5), mouse FKBP5 plasmid ([MR224601], mFKBP5), rat FKBP5 plasmid ([RR201166], rFKBP5) using anti-FKBP5 antibody [TA500673](1:500). Figure B, Western blot analysis of the same samples as figure A with anti-DDK antibody ([TA180144], 1:1000)



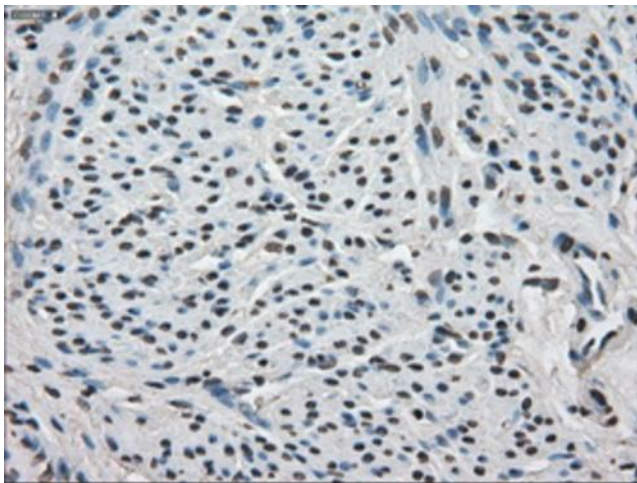
Immunohistochemical staining of paraffin-embedded colon tissue within the normal limits using anti-FKBP5mouse monoclonal antibody. (Heat-induced epitope retrieval by 10mM citric buffer, pH6.0, 100°C for 10min, [TA500673], Dilution 1:50)



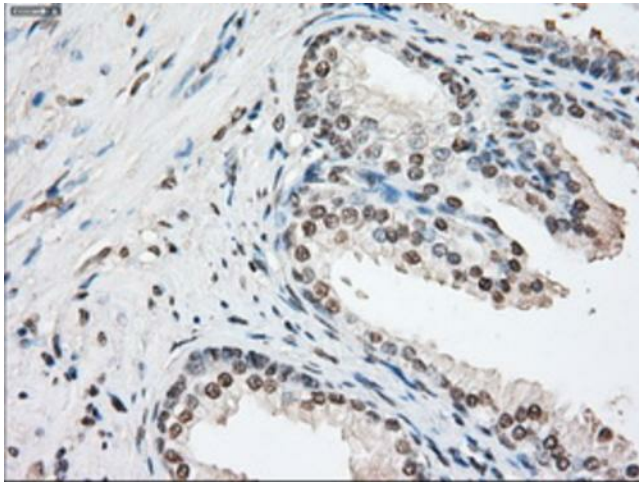
Immunohistochemical staining of paraffin-embedded pancreas tissue within the normal limits using anti-FKBP5mouse monoclonal antibody. (Heat-induced epitope retrieval by 10mM citric buffer, pH6.0, 100°C for 10min, [TA500673], Dilution 1:50)



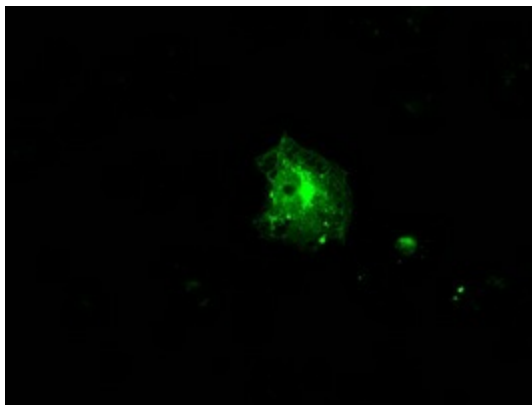
Immunohistochemical staining of paraffin-embedded Carcinoma of thyroid tissue using anti-FKBP5mouse monoclonal antibody. (Heat-induced epitope retrieval by 10mM citric buffer, pH6.0, 100°C for 10min, [TA500673], Dilution 1:50)



Immunohistochemical staining of paraffin-embedded endometrium tissue within the normal limits using anti-FKBP5mouse monoclonal antibody. (Heat-induced epitope retrieval by 10mM citric buffer, pH6.0, 100°C for 10min, [TA500673], Dilution 1:50)



Immunohistochemical staining of paraffin-embedded prostate tissue within the normal limits using anti-FKBP5 mouse monoclonal antibody. (Heat-induced epitope retrieval by 10mM citric buffer, pH6.0, 100°C for 10min, [TA500673], Dilution 1:50)



Anti-FKBP5 mouse monoclonal antibody ([TA500673]) immunofluorescent staining of COS7 cells transiently transfected by pCMV6-ENTRY FKBP5 ([RC210608]).