

## Product datasheet for **TA500614**

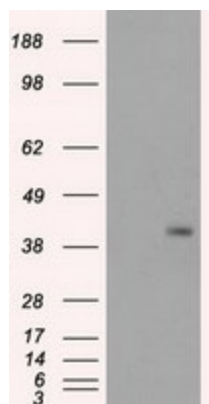
### PPP1R7 Mouse Monoclonal Antibody [Clone ID: OTI4F9]

#### Product data:

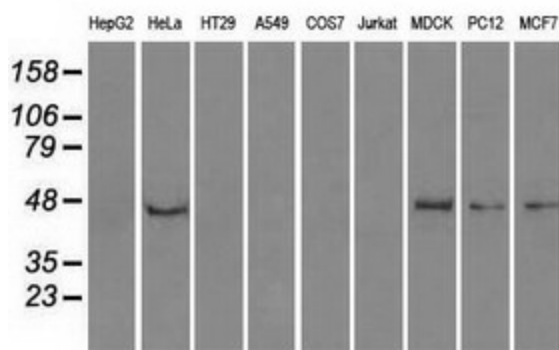
Product Type:	Primary Antibodies
Clone Name:	OTI4F9
Applications:	IF, IHC, WB
Recommended Dilution:	WB 1:2000, IHC 1:50, IF 1:50~100
Reactivity:	Human, Dog, Rat, Mouse
Host:	Mouse
Isotype:	IgG1
Clonality:	Monoclonal
Immunogen:	Full length human recombinant protein of human PPP1R7 (NP_002703) produced in HEK293T cell.
Formulation:	PBS (pH 7.3) containing 1% BSA, 50% glycerol and 0.02% sodium azide.
Concentration:	1 mg/ml
Purification:	Purified from mouse ascites fluids or tissue culture supernatant by affinity chromatography (protein A/G)
Conjugation:	Unconjugated
Storage:	Store at -20°C as received.
Stability:	Stable for 12 months from date of receipt.
Predicted Protein Size:	41.4 kDa
Gene Name:	protein phosphatase 1 regulatory subunit 7
Database Link:	<a href="#">NP_002703</a> <a href="#">Entrez Gene 301618 Rat</a> <a href="#">Entrez Gene 100855698 Dog</a> <a href="#">Entrez Gene 5510 Human Q15435</a>
Synonyms:	SDS22
Protein Families:	Druggable Genome, Phosphatase



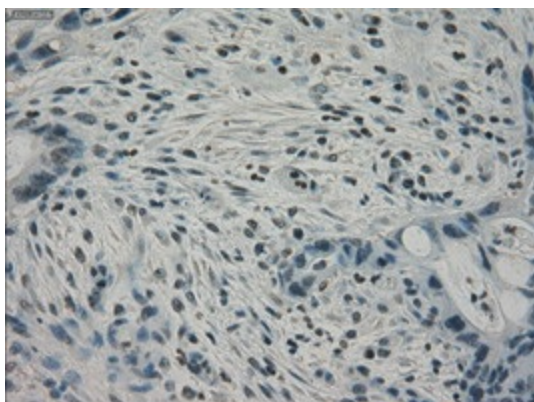
[View online »](#)

**Product images:**


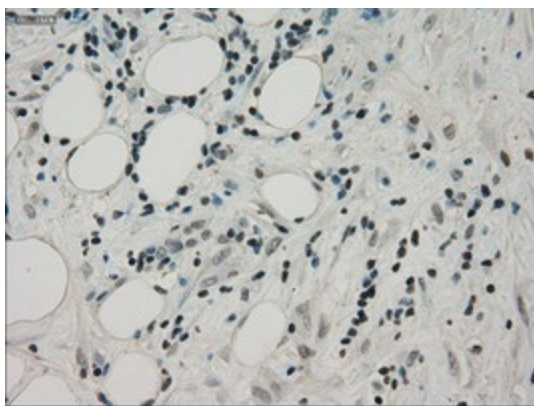
HEK293T cells were transfected with the pCMV6-ENTRY control (Cat# [PS100001], Left lane) or pCMV6-ENTRY PPP1R7 (Cat# [RC201634], Right lane) cDNA for 48 hrs and lysed. Equivalent amounts of cell lysates (5 ug per lane) were separated by SDS-PAGE and immunoblotted with anti-PPP1R7(Cat# TA500614). Positive lysates [LY400956] (100ug) and [LC400956] (20ug) can be purchased separately from OriGene.



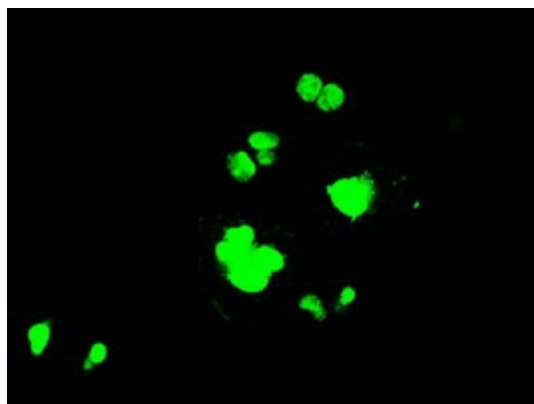
Western blot analysis of extracts (35ug) from 9 different cell lines by using anti-PPP1R7 monoclonal antibody (HepG2: human; HeLa: human; SVT2: mouse; A549: human; COS7: monkey; Jurkat: human; MDCK: canine; PC12: rat; MCF7: human).



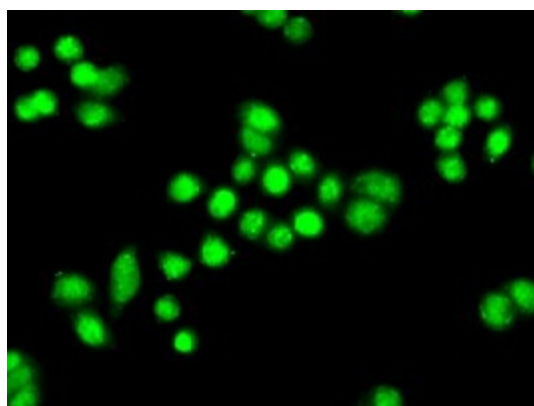
Immunohistochemical staining of paraffin-embedded Adenocarcinoma of Human colon tissue using anti-PPP1R7 mouse monoclonal antibody. (Heat-induced epitope retrieval by 10mM citric buffer, pH6.0, 100°C for 10min, TA500614)



Immunohistochemical staining of paraffin-embedded Carcinoma of Human pancreas tissue using anti-PPP1R7 mouse monoclonal antibody. (Heat-induced epitope retrieval by 10mM citric buffer, pH6.0, 100°C for 10min, TA500614)



Anti-PPP1R7 mouse monoclonal antibody (TA500614) immunofluorescent staining of COS7 cells transiently transfected by pCMV6-ENTRY PPP1R7 ([RC201634]).



Immunofluorescent staining of HT29 cells using anti-PPP1R7 mouse monoclonal antibody (TA500614).