

Product datasheet for **TA500517**

DHFR Mouse Monoclonal Antibody [Clone ID: OTI3A11]

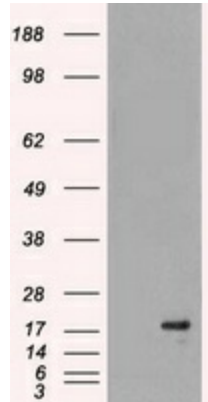
Product data:

Product Type:	Primary Antibodies
Clone Name:	OTI3A11
Applications:	IHC, WB
Recommended Dilution:	WB: 1:200 - 1:1000 IHC 1:50
Reactivity:	Human, Mouse, Rat
Host:	Mouse
Isotype:	IgG2b
Clonality:	Monoclonal
Immunogen:	Full-length protein expressed in 293T cell transfected with human DHFR expression vector
Formulation:	PBS (pH 7.3) containing 1% BSA, 50% glycerol and 0.02% sodium azide.
Concentration:	1.2 mg/ml
Purification:	Purified from mouse ascites fluids or tissue culture supernatant by affinity chromatography (protein A/G)
Conjugation:	Unconjugated
Storage:	Store at -20°C as received.
Stability:	Stable for 12 months from date of receipt.
Predicted Protein Size:	21.5 kDa
Gene Name:	dihydrofolate reductase
Database Link:	NP_000782 Entrez Gene 13361 Mouse Entrez Gene 24312 Rat Entrez Gene 1719 Human P00374
Background:	Dihydrofolate reductase converts dihydrofolate into tetrahydrofolate, a methyl group shuttle required for the de novo synthesis of purines, thymidylic acid, and certain amino acids. While the functional dihydrofolate reductase gene has been mapped to chromosome 5, multiple intronless processed pseudogenes or dihydrofolate reductase-like genes have been identified on separate chromosomes. Dihydrofolate reductase deficiency has been linked to megaloblastic anemia.

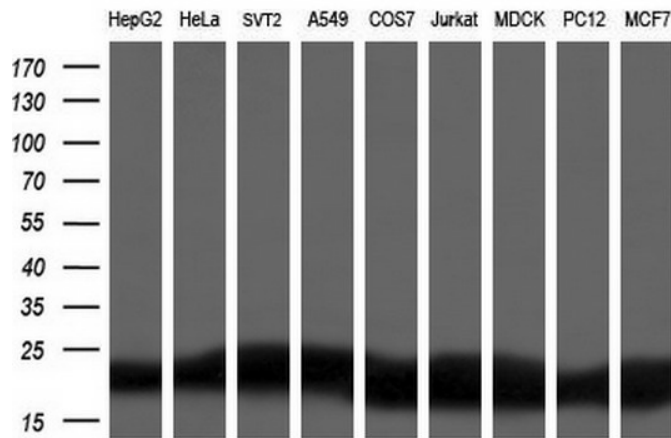


[View online »](#)

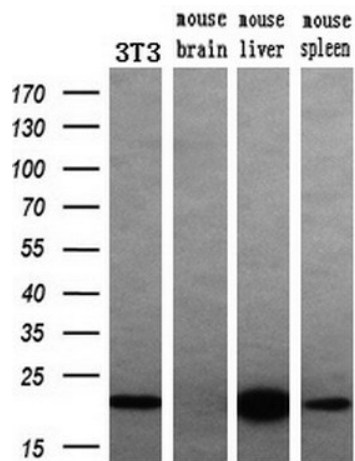
Synonyms: DHFRP1; DYR
Protein Families: Druggable Genome, Stem cell - Pluripotency
Protein Pathways: Folate biosynthesis, Metabolic pathways, One carbon pool by folate

Product images:


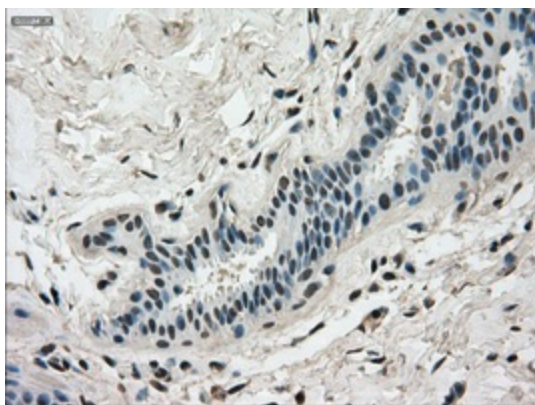
HEK293T cells were transfected with the pCMV6-ENTRY control (Cat# [PS100001], Left lane) or pCMV6-ENTRY DHFR (Cat# [RC200089], Right lane) cDNA for 48 hrs and lysed. Equivalent amounts of cell lysates (5 ug per lane) were separated by SDS-PAGE and immunoblotted with anti-DHFR antibody (Cat# TA500517). Positive lysates [LY400271] (100ug) and [LC400271] (20ug) can be purchased separately from OriGene.



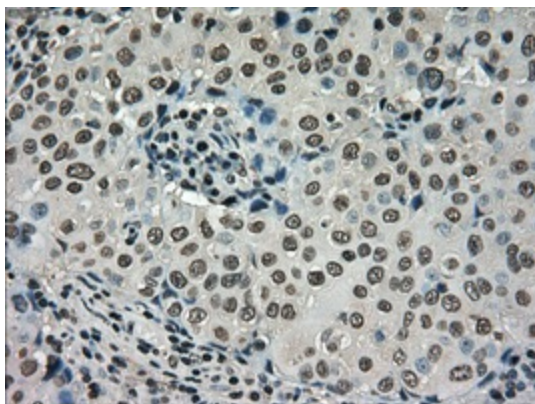
Western blot analysis of extracts (35ug) from 9 different cell lines by using anti-DHFR monoclonal antibody (HepG2: human; HeLa: human; SVT2: mouse; A549: human; COS7: monkey; Jurkat: human; MDCK: canine; PC12: rat; MCF7: human) (1:200).



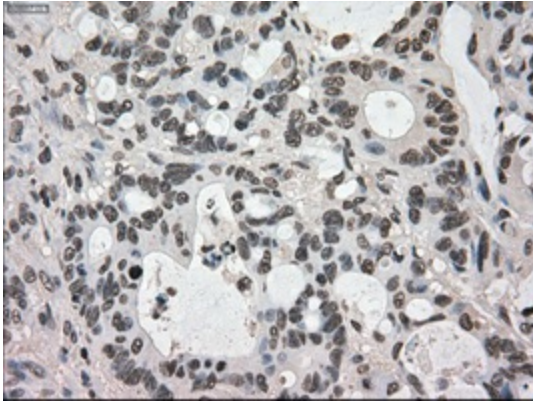
Western blot analysis of extracts (10ug) from a mouse cell line and 3 different mouse tissues by using anti-DHFR monoclonal antibody (1:200).



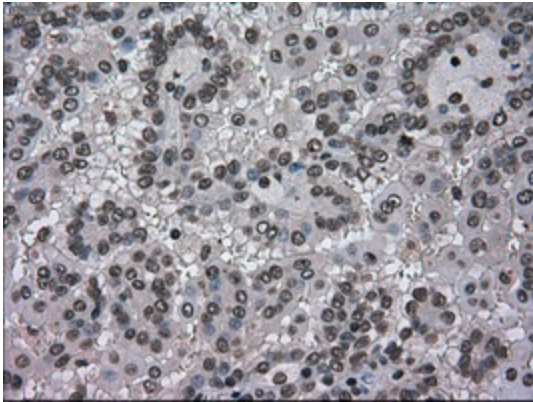
Immunohistochemical staining of paraffin-embedded breast tissue within the normal limits using anti-DHFR mouse monoclonal antibody. (Heat-induced epitope retrieval by 10mM citric buffer, pH6.0, 100°C for 10min, TA500517, Dilution 1:50)



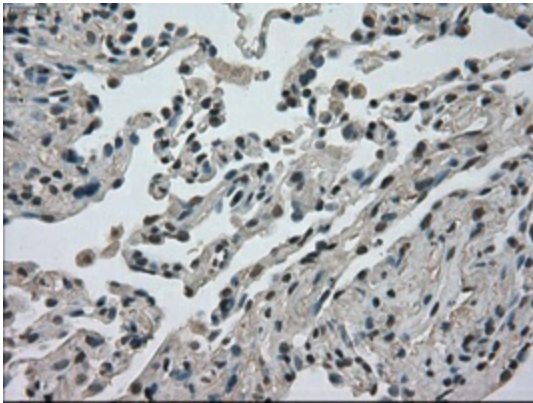
Immunohistochemical staining of paraffin-embedded Adenocarcinoma of breast tissue using anti-DHFR mouse monoclonal antibody. (Heat-induced epitope retrieval by 10mM citric buffer, pH6.0, 100°C for 10min, TA500517, Dilution 1:50)



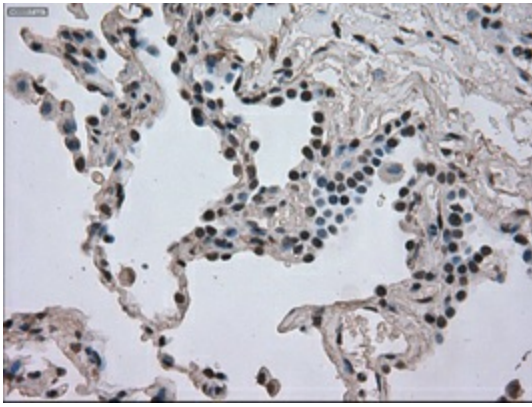
Immunohistochemical staining of paraffin-embedded Adenocarcinoma of colon tissue using anti-DHFR mouse monoclonal antibody. (Heat-induced epitope retrieval by 10mM citric buffer, pH6.0, 100°C for 10min, TA500517, Dilution 1:50)



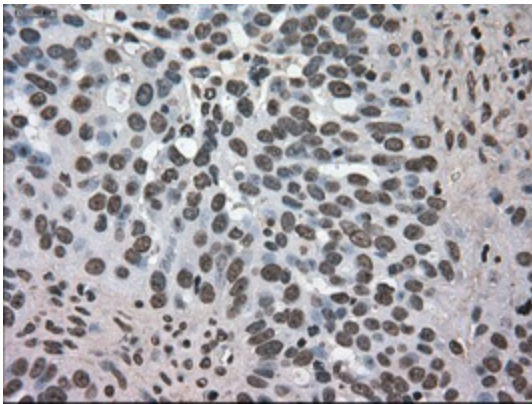
Immunohistochemical staining of paraffin-embedded Carcinoma of kidney tissue using anti-DHFR mouse monoclonal antibody. (Heat-induced epitope retrieval by 10mM citric buffer, pH6.0, 100°C for 10min, TA500517, Dilution 1:50)



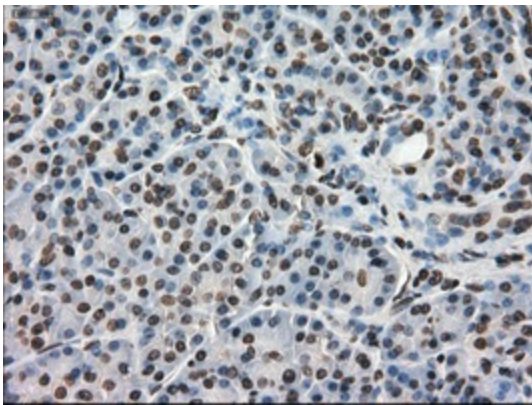
Immunohistochemical staining of paraffin-embedded lung tissue within the normal limits using anti-DHFR mouse monoclonal antibody. (Heat-induced epitope retrieval by 10mM citric buffer, pH6.0, 100°C for 10min, TA500517, Dilution 1:50)



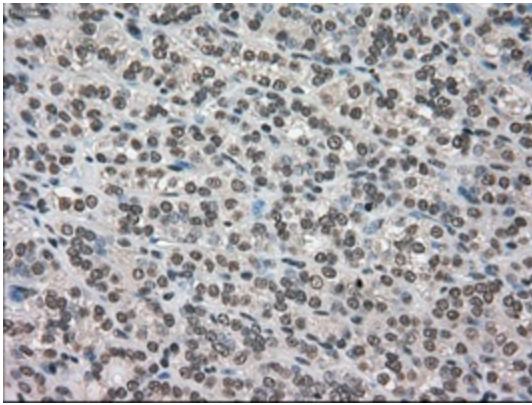
Immunohistochemical staining of paraffin-embedded Carcinoma of lung tissue using anti-DHFRmouse monoclonal antibody. (Heat-induced epitope retrieval by 10mM citric buffer, pH6.0, 100°C for 10min, TA500517, Dilution 1:50)



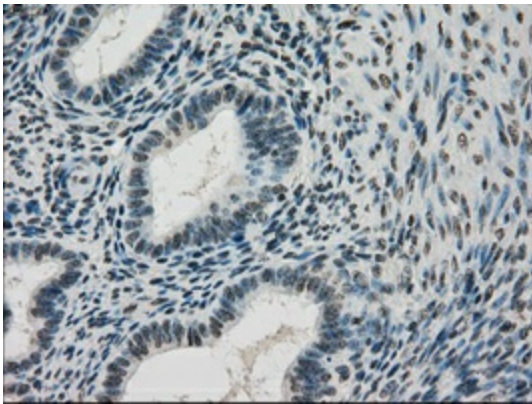
Immunohistochemical staining of paraffin-embedded Adenocarcinoma of ovary tissue using anti-DHFRmouse monoclonal antibody. (Heat-induced epitope retrieval by 10mM citric buffer, pH6.0, 100°C for 10min, TA500517, Dilution 1:50)



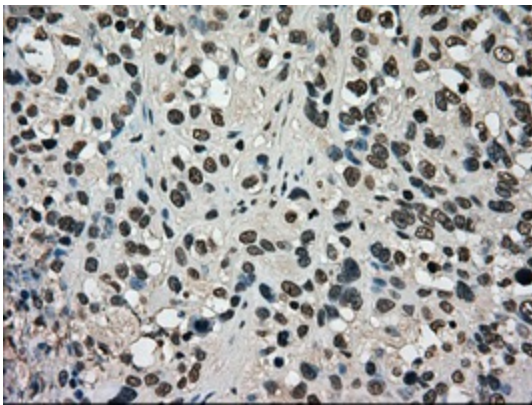
Immunohistochemical staining of paraffin-embedded pancreas tissue within the normal limits using anti-DHFRmouse monoclonal antibody. (Heat-induced epitope retrieval by 10mM citric buffer, pH6.0, 100°C for 10min, TA500517, Dilution 1:50)



Immunohistochemical staining of paraffin-embedded Carcinoma of thyroid tissue using anti-DHFR mouse monoclonal antibody. (Heat-induced epitope retrieval by 10mM citric buffer, pH6.0, 100°C for 10min, TA500517, Dilution 1:50)



Immunohistochemical staining of paraffin-embedded endometrium tissue within the normal limits using anti-DHFR mouse monoclonal antibody. (Heat-induced epitope retrieval by 10mM citric buffer, pH6.0, 100°C for 10min, TA500517, Dilution 1:50)



Immunohistochemical staining of paraffin-embedded Carcinoma of bladder tissue using anti-DHFR mouse monoclonal antibody. (Heat-induced epitope retrieval by 10mM citric buffer, pH6.0, 100°C for 10min, TA500517, Dilution 1:50)