

Product datasheet for **TA500507BM**

Kindlin 2 (FERMT2) Mouse Monoclonal Antibody (HRP conjugated) [Clone ID: OTI25A4]

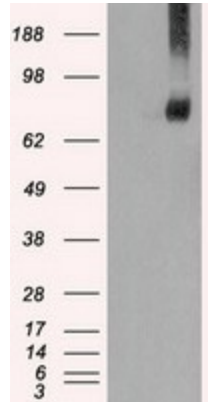
Product data:

Product Type:	Primary Antibodies
Clone Name:	OTI25A4
Applications:	IF, IHC, IP, WB
Recommended Dilution:	WB 1:1000~2000, IHC 1:150, IF 1:100, IP 2ug/500ul
Reactivity:	Human, Monkey, Mouse, Rat
Host:	Mouse
Isotype:	IgG2a
Clonality:	Monoclonal
Immunogen:	Full-length protein expressed in 293T cell transfected with human FERMT2 expression vector
Formulation:	PBS (pH 7.3) containing 1% BSA, 50% glycerol.
Concentration:	0.5 mg/ml
Purification:	Purified from mouse ascites fluids or tissue culture supernatant by affinity chromatography (protein A/G)
Conjugation:	HRP
Storage:	Store at -20°C as received.
Stability:	Stable for 12 months from date of receipt.
Predicted Protein Size:	77.9 kDa
Gene Name:	FERM domain containing kindlin 2
Database Link:	NP_006823 Entrez Gene 218952 Mouse Entrez Gene 289992 Rat Entrez Gene 693958 Monkey Entrez Gene 10979 Human Q96AC1
Background:	Participates in the connection between ECM adhesion sites and the actin cytoskeleton and also in the orchestration of actin assembly and cell shape modulation. Recruits migfilin (FBLP1) protein to cell-ECM focal adhesion sites
Synonyms:	KIND2; mig-2; MIG2; PLEKHC1; UNC112; UNC112B

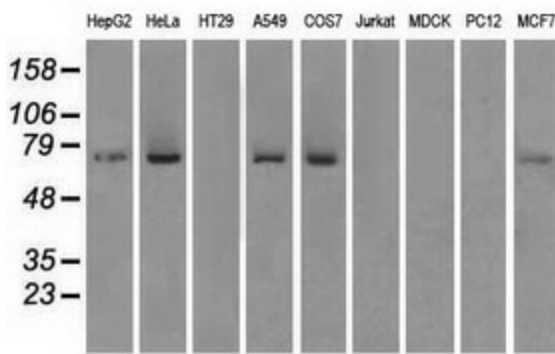


[View online »](#)

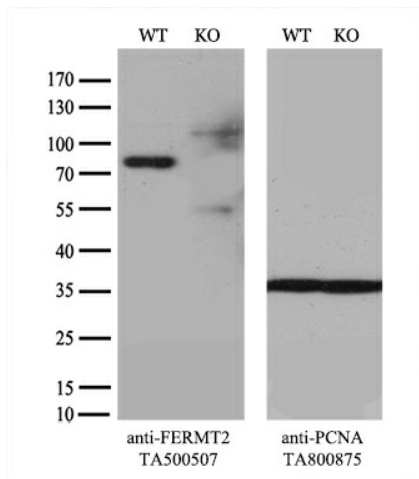
Product images:



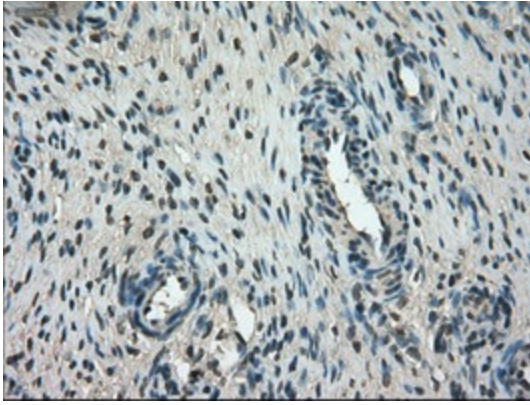
HEK293T cells were transfected with the pCMV6-ENTRY control (Left lane) or pCMV6-ENTRY FERMT2 ([RC205727], Right lane) cDNA for 48 hrs and lysed. Equivalent amounts of cell lysates (5 ug per lane) were separated by SDS-PAGE and immunoblotted with anti-FERMT2. Positive lysates [LY416377] (100ug) and [LC416377] (20ug) can be purchased separately from OriGene.



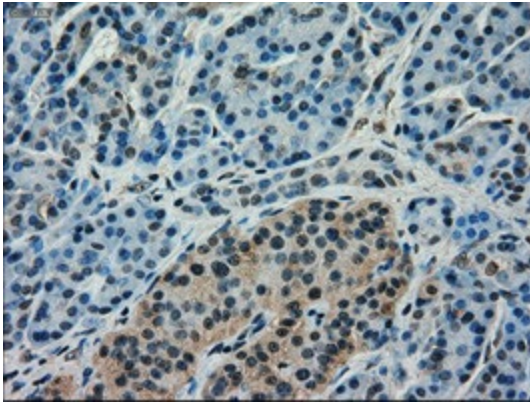
Western blot analysis of extracts (35ug) from 9 different cell lines by using anti-FERMT2 monoclonal antibody.



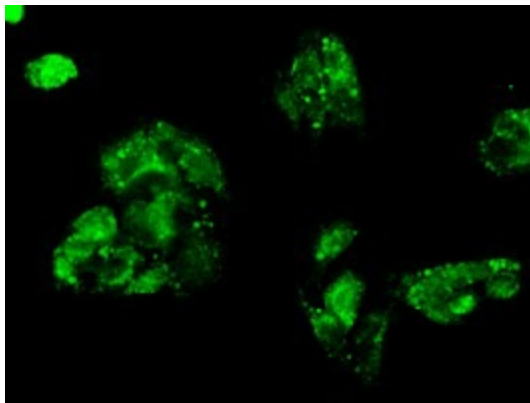
Equivalent amounts of cell lysates (10 ug per lane) of wild-type HeLa cells (WT, Cat# LC810HELA) and FERMT2-Knockout HeLa cells (KO, Cat# [LC812552]) were separated by SDS-PAGE and immunoblotted with anti-FERMT2 monoclonal antibody [TA500507] (1:500). Then the blotted membrane was stripped and reprobed with anti-PCNA antibody as a loading control.



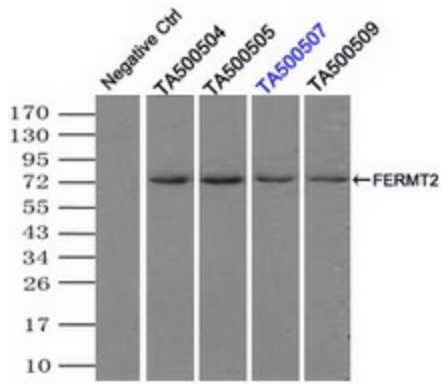
Immunohistochemical staining of paraffin-embedded Human Ovary tissue within the normal limits using anti-FERMT2 mouse monoclonal antibody. (Heat-induced epitope retrieval by 10mM citric buffer, pH6.0, 100°C for 10min, [TA500507])



Immunohistochemical staining of paraffin-embedded Human pancreas tissue within the normal limits using anti-FERMT2 mouse monoclonal antibody. (Heat-induced epitope retrieval by 10mM citric buffer, pH6.0, 100°C for 10min, [TA500507])



Immunofluorescent staining of HepG2 cells using anti-FERMT2 mouse monoclonal antibody ([TA500507]).



Immunoprecipitation (IP) of FERMT2 by using TrueMab monoclonal anti-FERMT2 antibodies (Negative control: IP without adding anti-FERMT2 antibody.). For each experiment, 500ul of DDK tagged FERMT2 overexpression lysates (at 1:5 dilution with HEK293T lysate), 2ug of anti-FERMT2 antibody and 20ul (0.1mg) of goat anti-mouse conjugated magnetic beads were mixed and incubated overnight. After extensive wash to remove any non-specific binding, the immunoprecipitated products were analyzed with rabbit anti-DDK polyclonal antibody.