

## Product datasheet for **TA500500S**

### **SAPK3 (MAPK12) Mouse Monoclonal Antibody [Clone ID: OTI10E1]**

#### **Product data:**

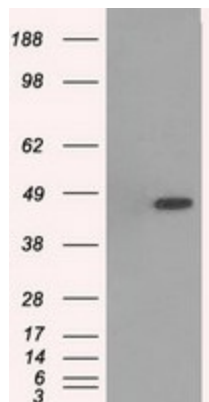
<b>Product Type:</b>	Primary Antibodies
<b>Clone Name:</b>	OTI10E1
<b>Applications:</b>	FC, IHC, WB
<b>Recommended Dilution:</b>	WB 1:500, IHC 1:150, FLOW 1:100
<b>Reactivity:</b>	Human, Mouse, Rat
<b>Host:</b>	Mouse
<b>Isotype:</b>	IgG1
<b>Clonality:</b>	Monoclonal
<b>Immunogen:</b>	Full-length protein expressed in 293T cell transfected with human MAPK12 expression vector
<b>Formulation:</b>	PBS (pH 7.3) containing 1% BSA, 50% glycerol and 0.02% sodium azide.
<b>Concentration:</b>	1 mg/ml
<b>Purification:</b>	Purified from mouse ascites fluids or tissue culture supernatant by affinity chromatography (protein A/G)
<b>Conjugation:</b>	Unconjugated
<b>Storage:</b>	Store at -20°C as received.
<b>Stability:</b>	Stable for 12 months from date of receipt.
<b>Predicted Protein Size:</b>	42 kDa
<b>Gene Name:</b>	mitogen-activated protein kinase 12
<b>Database Link:</b>	<a href="#">NP_002960</a> <a href="#">Entrez Gene 29857 Mouse</a> <a href="#">Entrez Gene 60352 Rat</a> <a href="#">Entrez Gene 6300 Human</a> <a href="#">P53778</a>
<b>Background:</b>	Activation of members of the mitogen-activated protein kinase family is a major mechanism for transduction of extracellular signals. Stress-activated protein kinases are one subclass of MAP kinases. The protein encoded by this gene functions as a signal transducer during differentiation of myoblasts to myotubes.
<b>Synonyms:</b>	ERK-6; ERK3; ERK6; MAPK 12; P38GAMMA; PRKM12; SAPK-3; SAPK3
<b>Protein Families:</b>	Druggable Genome, Protein Kinase



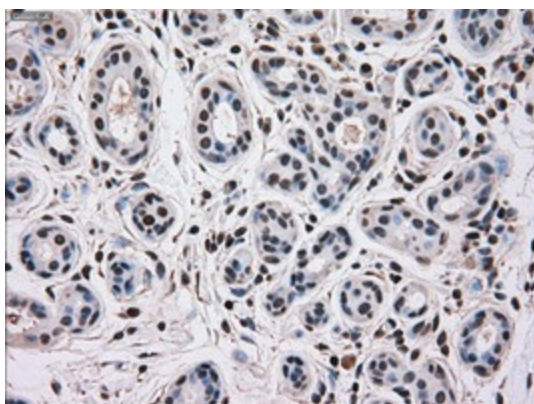
[View online »](#)

**Protein Pathways:**

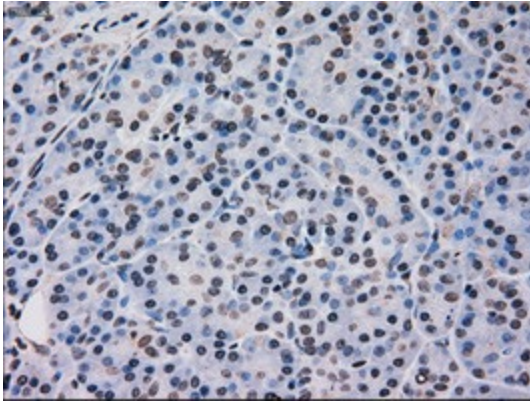
Amyotrophic lateral sclerosis (ALS), Epithelial cell signaling in Helicobacter pylori infection, Fc epsilon RI signaling pathway, GnRH signaling pathway, Leukocyte transendothelial migration, MAPK signaling pathway, Neurotrophin signaling pathway, NOD-like receptor signaling pathway, Oocyte meiosis, Progesterone-mediated oocyte maturation, RIG-I-like receptor signaling pathway, T cell receptor signaling pathway, Toll-like receptor signaling pathway, VEGF signaling pathway

**Product images:**

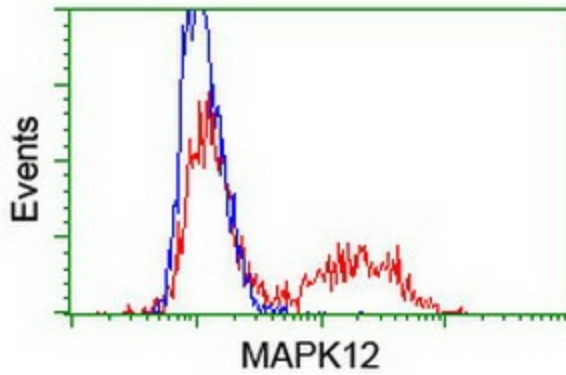
HEK293T cells were transfected with the pCMV6-ENTRY control (Cat# [PS100001], Left lane) or pCMV6-ENTRY MAPK12 (Cat# [RC204857], Right lane) cDNA for 48 hrs and lysed. Equivalent amounts of cell lysates (5 ug per lane) were separated by SDS-PAGE and immunoblotted with anti-MAPK12 (Cat# [TA500500]). Positive lysates [LY401039] (100ug) and [LC401039] (20ug) can be purchased separately from OriGene.



Immunohistochemical staining of paraffin-embedded Human breast tissue within the normal limits using anti-MAPK12 mouse monoclonal antibody. (Heat-induced epitope retrieval by 10mM citric buffer, pH6.0, 100°C for 10min, [TA500500])



Immunohistochemical staining of paraffin-embedded Human pancreas tissue within the normal limits using anti-MAPK12 mouse monoclonal antibody. (Heat-induced epitope retrieval by 10mM citric buffer, pH6.0, 100°C for 10min, [TA500500])



HEK293T cells transfected with either [RC204857] overexpress plasmid (Red) or empty vector control plasmid (Blue) were immunostained by anti-MAPK12 antibody ([TA500500]), and then analyzed by flow cytometry.