

## Product datasheet for **TA500428S**

### MEK4 (MAP2K4) Mouse Monoclonal Antibody [Clone ID: OTI1D6]

#### Product data:

|                         |  |
|-------------------------|--|
| Product Type:           | Primary Antibodies   |
| Clone Name:             | OTI1D6   |
| Applications:           | IF, IHC, IP, WB  |
| Recommended Dilution:   | WB 1:2000, IHC 1:150, IF 1:100, IP 2ug/500ul   |
| Reactivity:             | Human, Mouse, Rat  |
| Host:                   | Mouse  |
| Isotype:                | IgG2a  |
| Clonality:              | Monoclonal   |
| Immunogen:              | Full-length protein expressed in 293T cell transfected with human MAP2K4 expression vector   |
| Formulation:            | PBS (pH 7.3) containing 1% BSA, 50% glycerol and 0.02% sodium azide.   |
| Concentration:          | 1 mg/ml  |
| Purification:           | Purified from mouse ascites fluids or tissue culture supernatant by affinity chromatography (protein A/G)  |
| Conjugation:            | Unconjugated   |
| Storage:                | Store at -20°C as received.  |
| Stability:              | Stable for 12 months from date of receipt.   |
| Predicted Protein Size: | 44.3 kDa   |
| Gene Name:              | mitogen-activated protein kinase kinase 4  |
| Database Link:          | <a href="#">NP_003001</a><br><a href="#">Entrez Gene 26398 Mouse</a> <a href="#">Entrez Gene 287398 Rat</a> <a href="#">Entrez Gene 6416 Human</a><br><a href="#">P45985</a> |

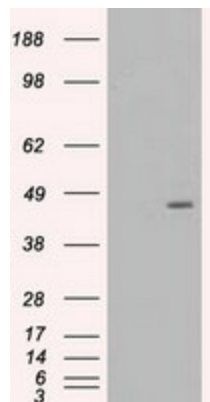
**Background:** This gene encodes a dual specificity protein kinase that belongs to the Ser/Thr protein kinase family. This kinase is a direct activator of MAP kinases in response to various environmental stresses or mitogenic stimuli. It has been shown to activate MAPK8/JNK1, MAPK9/JNK2, and MAPK14/p38, but not MAPK1/ERK2 or MAPK3/ERK3. This kinase is phosphorylated, and thus activated by MAP3K1/MEKK. The knockout studies in mice suggested the roles of this kinase in mediating survival signal in T cell development, as well as in the organogenesis of liver.



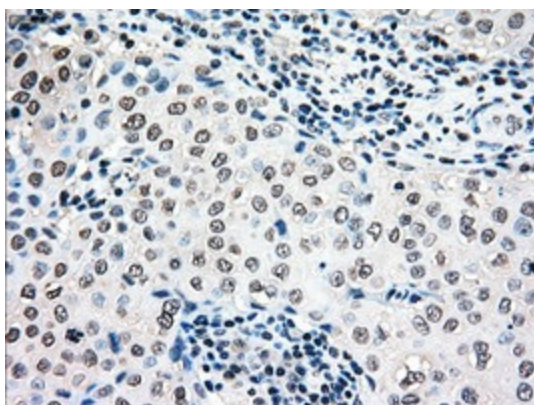
[View online »](#)

|                          |   |
|--------------------------|---|
| <b>Synonyms:</b>         | JNKK; JNKK1; MAPKK4; MEK4; MKK4; PRKMK4; SAPKK-1; SAPKK1; SEK1; SERK1; SKK1   |
| <b>Protein Families:</b> | Druggable Genome, Protein Kinase  |
| <b>Protein Pathways:</b> | Epithelial cell signaling in Helicobacter pylori infection, ErbB signaling pathway, Fc epsilon RI signaling pathway, GnRH signaling pathway, MAPK signaling pathway, Toll-like receptor signaling pathway |

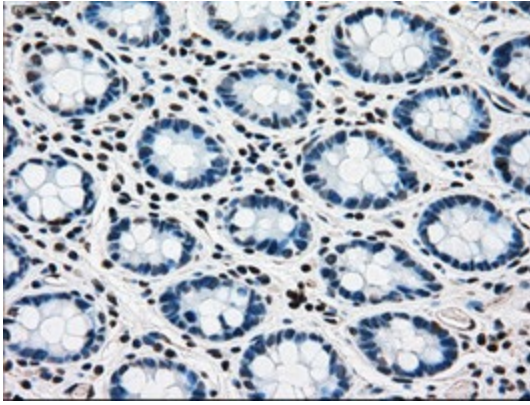
### Product images:



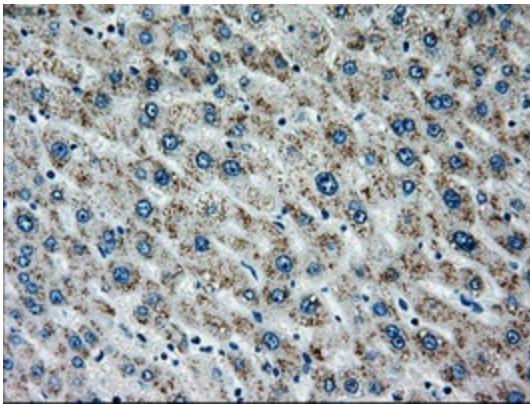
HEK293T cells were transfected with the pCMV6-ENTRY control (Left lane) or pCMV6-ENTRY MAP2K4 ([RC206051], Right lane) cDNA for 48 hrs and lysed. Equivalent amounts of cell lysates (5 ug per lane) were separated by SDS-PAGE and immunoblotted with anti-MAP2K4. Positive lysates [LY401058] (100ug) and [LC401058] (20ug) can be purchased separately from OriGene.



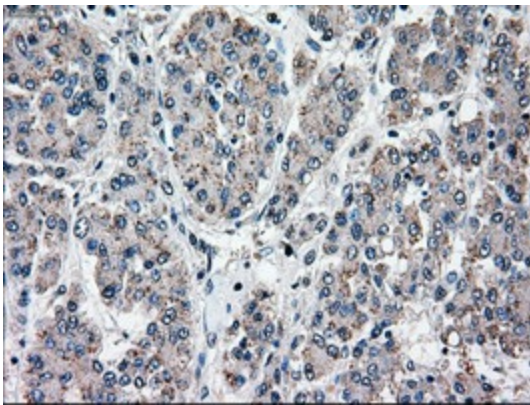
Immunohistochemical staining of paraffin-embedded Adenocarcinoma of Human breast tissue using anti-MAP2K4 mouse monoclonal antibody. (Heat-induced epitope retrieval by 10mM citric buffer, pH6.0, 100°C for 10min, [TA500428])



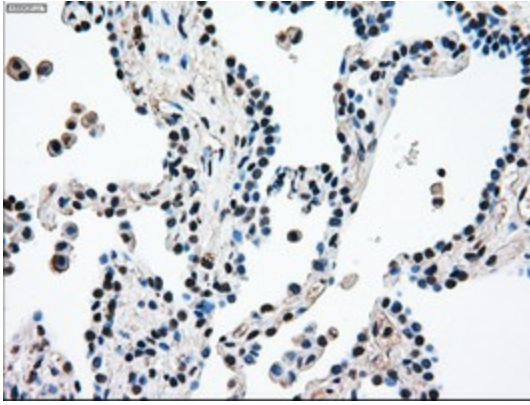
Immunohistochemical staining of paraffin-embedded Human colon tissue within the normal limits using anti-MAP2K4 mouse monoclonal antibody. (Heat-induced epitope retrieval by 10mM citric buffer, pH6.0, 100°C for 10min, [TA500428])



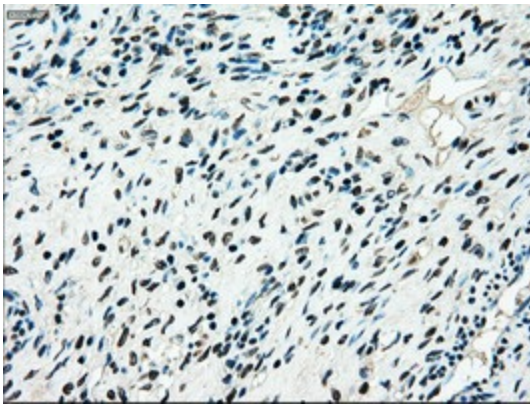
Immunohistochemical staining of paraffin-embedded Human liver tissue within the normal limits using anti-MAP2K4 mouse monoclonal antibody. (Heat-induced epitope retrieval by 10mM citric buffer, pH6.0, 100°C for 10min, [TA500428])



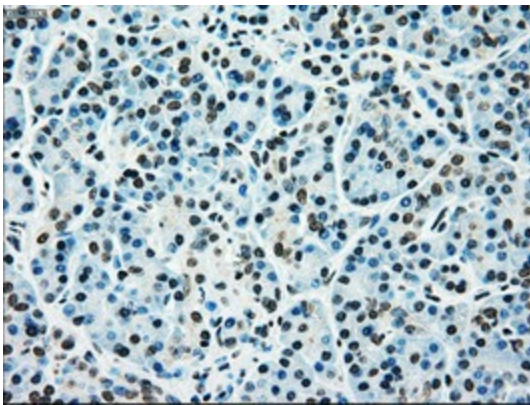
Immunohistochemical staining of paraffin-embedded Carcinoma of Human liver tissue using anti-MAP2K4 mouse monoclonal antibody. (Heat-induced epitope retrieval by 10mM citric buffer, pH6.0, 100°C for 10min, [TA500428])



Immunohistochemical staining of paraffin-embedded Carcinoma of Human lung tissue using anti-MAP2K4 mouse monoclonal antibody. (Heat-induced epitope retrieval by 10mM citric buffer, pH6.0, 100°C for 10min, [TA500428])

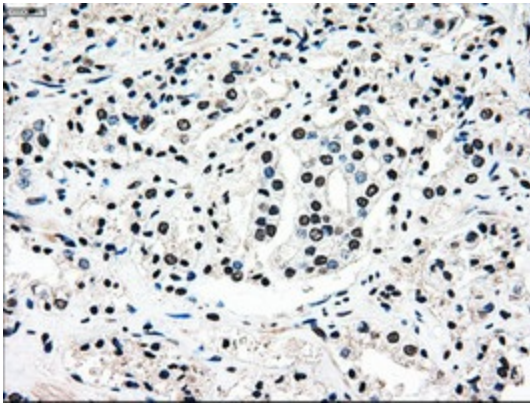


Immunohistochemical staining of paraffin-embedded Human Ovary tissue within the normal limits using anti-MAP2K4 mouse monoclonal antibody. (Heat-induced epitope retrieval by 10mM citric buffer, pH6.0, 100°C for 10min, [TA500428])

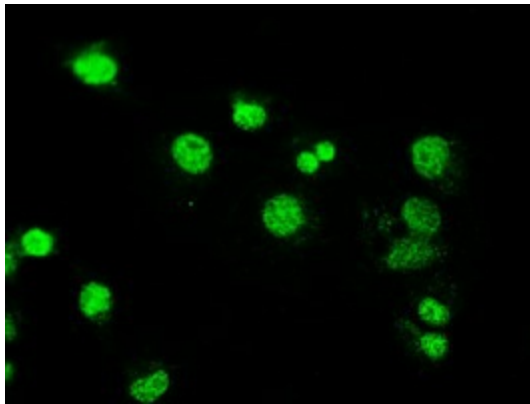


Immunohistochemical staining of paraffin-embedded Human pancreas tissue within the normal limits using anti-MAP2K4 mouse monoclonal antibody. (Heat-induced epitope retrieval by 10mM citric buffer, pH6.0, 100°C for 10min, [TA500428])

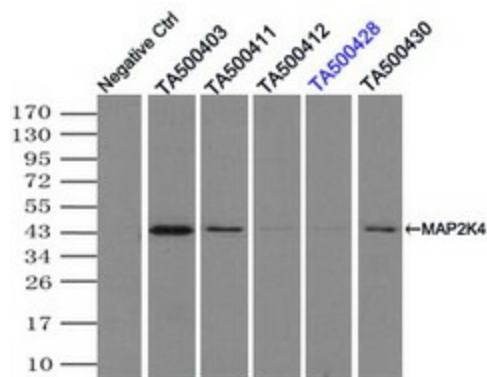




Immunohistochemical staining of paraffin-embedded Carcinoma of Human prostate tissue using anti-MAP2K4 mouse monoclonal antibody. (Heat-induced epitope retrieval by 10mM citric buffer, pH6.0, 100°C for 10min, [TA500428])



Anti-MAP2K4 mouse monoclonal antibody ([TA500428]) immunofluorescent staining of COS7 cells transiently transfected by pCMV6-ENTRY MAP2K4 ([RC206051]).



Immunoprecipitation (IP) of MAP2K4 by using TrueMab monoclonal anti-MAP2K4 antibodies (Negative control: IP without adding anti-MAP2K4 antibody.). For each experiment, 500ul of DDK tagged MAP2K4 overexpression lysates (at 1:5 dilution with HEK293T lysate), 2ug of anti-MAP2K4 antibody and 20ul (0.1mg) of goat anti-mouse conjugated magnetic beads were mixed and incubated overnight. After extensive wash to remove any non-specific binding, the immunoprecipitated products were analyzed with rabbit anti-DDK polyclonal antibody.