

Product datasheet for **TA500414AM**

TYRO3 Mouse Monoclonal Antibody (Biotin conjugated) [Clone ID: OTI2C4]

Product data:

| | |
|--------------------------------|---|
| Product Type: | Primary Antibodies |
| Clone Name: | OTI2C4 |
| Applications: | IF, IHC, IP, WB |
| Recommended Dilution: | WB 1:500, IHC 1:150, IF 1:100, IP 2ug/500ul |
| Reactivity: | Human, Mouse, Rat |
| Host: | Mouse |
| Isotype: | IgG2b |
| Clonality: | Monoclonal |
| Immunogen: | Full length human recombinant protein of human TYRO3 (NP_006284) produced in HEK293T cell. |
| Formulation: | PBS (pH 7.3) containing 1% BSA, 50% glycerol and 0.02% sodium azide. |
| Concentration: | 0.5 mg/ml |
| Purification: | Purified from mouse ascites fluids or tissue culture supernatant by affinity chromatography (protein A/G) |
| Conjugation: | Biotin |
| Storage: | Store at -20°C as received. |
| Stability: | Stable for 12 months from date of receipt. |
| Predicted Protein Size: | 96.7 kDa |
| Gene Name: | TYRO3 protein tyrosine kinase |
| Database Link: | NP_006284 Entrez Gene 22174 Mouse Entrez Gene 25232 Rat Entrez Gene 7301 Human Q06418 |
| Background: | The gene is part of a 3-member transmembrane receptor kinase receptor family with a processed pseudogene distal on chromosome 15. The encoded protein is activated by the products of the growth arrest-specific gene 6 and protein S genes and is involved in controlling cell survival and proliferation, spermatogenesis, immunoregulation and phagocytosis. The encoded protein has also been identified as a cell entry factor for Ebola and Marburg viruses. [provided by RefSeq] |

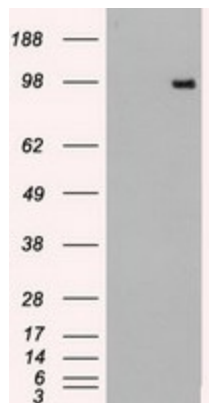


[View online »](#)

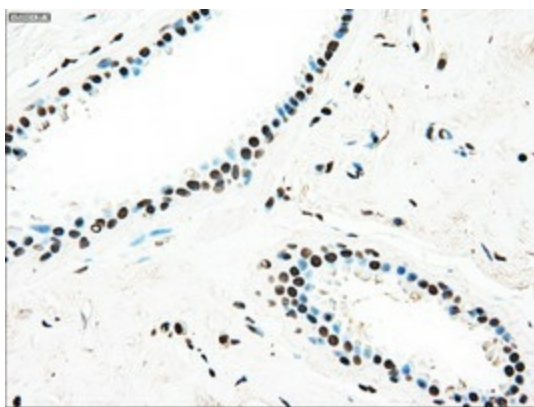
Synonyms: BYK; Dtk; Etk-2; Rek; RSE; Sky; Tif

Protein Families: Druggable Genome, Protein Kinase

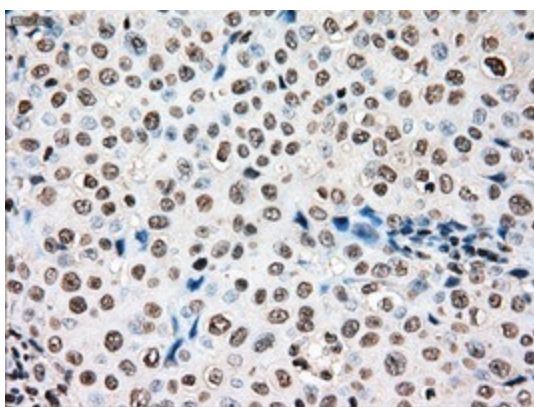
Product images:



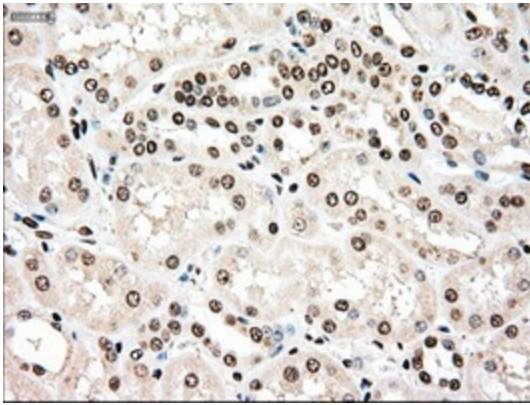
HEK293T cells were transfected with the pCMV6-ENTRY control (Left lane) or pCMV6-ENTRY TYRO3 ([RC208260], Right lane) cDNA for 48 hrs and lysed. Equivalent amounts of cell lysates (5 ug per lane) were separated by SDS-PAGE and immunoblotted with anti-TYRO3. Positive lysates [LY401899] (100ug) and [LC401899] (20ug) can be purchased separately from OriGene.



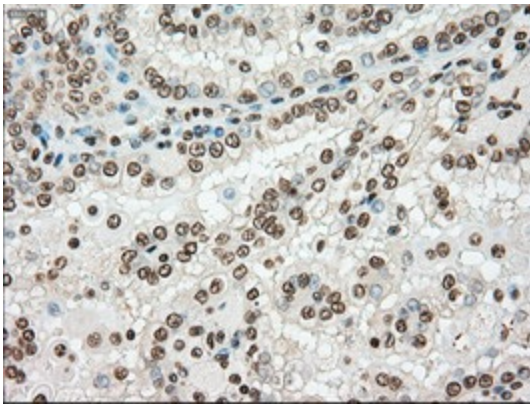
Immunohistochemical staining of paraffin-embedded Human breast tissue within the normal limits using anti-TYRO3 mouse monoclonal antibody. (Heat-induced epitope retrieval by 10mM citric buffer, pH6.0, 100°C for 10min, [TA500414])



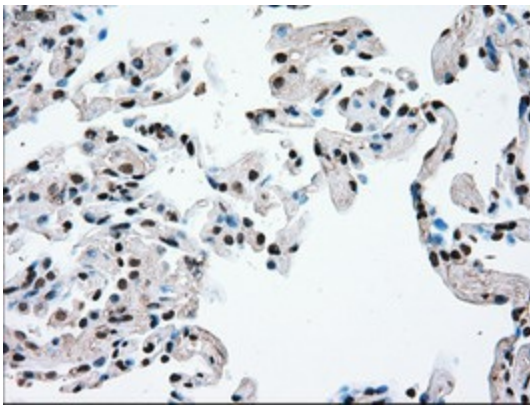
Immunohistochemical staining of paraffin-embedded Adenocarcinoma of Human breast tissue using anti-TYRO3 mouse monoclonal antibody. (Heat-induced epitope retrieval by 10mM citric buffer, pH6.0, 100°C for 10min, [TA500414])



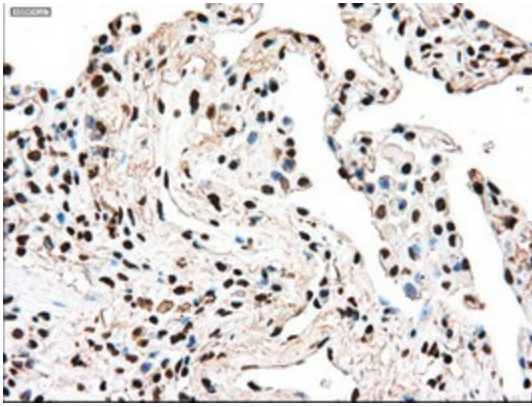
Immunohistochemical staining of paraffin-embedded Human Kidney tissue within the normal limits using anti-TYRO3 mouse monoclonal antibody. (Heat-induced epitope retrieval by 10mM citric buffer, pH6.0, 100°C for 10min, [TA500414])



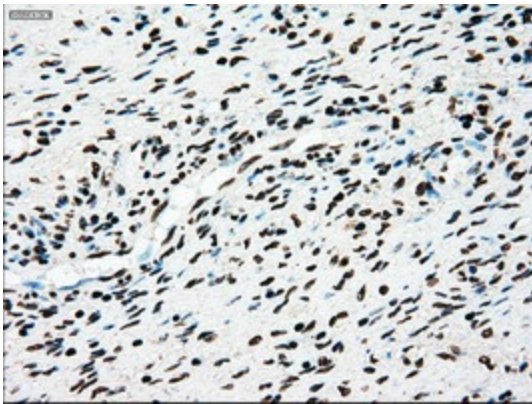
Immunohistochemical staining of paraffin-embedded Carcinoma of Human kidney tissue using anti-TYRO3 mouse monoclonal antibody. (Heat-induced epitope retrieval by 10mM citric buffer, pH6.0, 100°C for 10min, [TA500414])



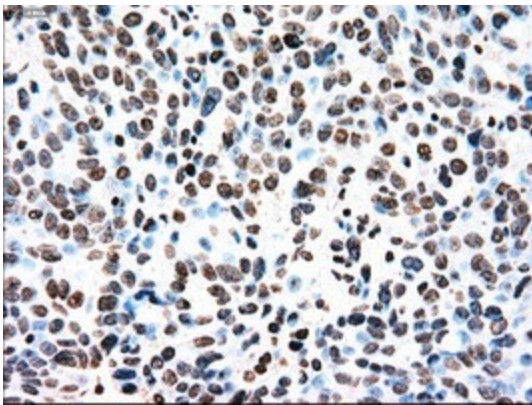
Immunohistochemical staining of paraffin-embedded Human lung tissue within the normal limits using anti-TYRO3 mouse monoclonal antibody. (Heat-induced epitope retrieval by 10mM citric buffer, pH6.0, 100°C for 10min, [TA500414])



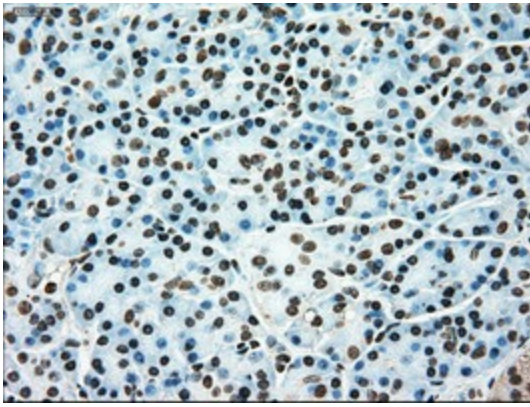
Immunohistochemical staining of paraffin-embedded Carcinoma of Human lung tissue using anti-TYRO3 mouse monoclonal antibody. (Heat-induced epitope retrieval by 10mM citric buffer, pH6.0, 100°C for 10min, [TA500414])



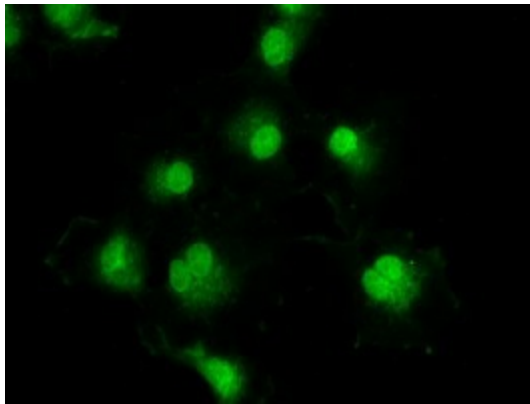
Immunohistochemical staining of paraffin-embedded Human Ovary tissue within the normal limits using anti-TYRO3 mouse monoclonal antibody. (Heat-induced epitope retrieval by 10mM citric buffer, pH6.0, 100°C for 10min, [TA500414])



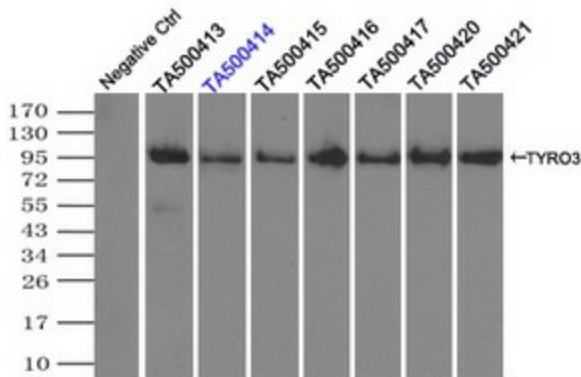
Immunohistochemical staining of paraffin-embedded Adenocarcinoma of Human ovary tissue using anti-TYRO3 mouse monoclonal antibody. (Heat-induced epitope retrieval by 10mM citric buffer, pH6.0, 100°C for 10min, [TA500414])



Immunohistochemical staining of paraffin-embedded Human pancreas tissue within the normal limits using anti-TYRO3 mouse monoclonal antibody. (Heat-induced epitope retrieval by 10mM citric buffer, pH6.0, 100°C for 10min, [TA500414])



Anti-TYRO3 mouse monoclonal antibody ([TA500414]) immunofluorescent staining of COS7 cells transiently transfected by pCMV6-ENTRY TYRO3 ([RC208260]).



Immunoprecipitation (IP) of TYRO3 by using TrueMab monoclonal anti-TYRO3 antibodies (Negative control: IP without adding anti-TYRO3 antibody.). For each experiment, 500ul of DDK tagged TYRO3 overexpression lysates (at 1:5 dilution with HEK293T lysate), 2ug of anti-TYRO3 antibody and 20ul (0.1mg) of goat anti-mouse conjugated magnetic beads were mixed and incubated overnight. After extensive wash to remove any non-specific binding, the immunoprecipitated products were analyzed with rabbit anti-DDK polyclonal antibody.