

## Product datasheet for **TA500401BM**

### PLK1 Mouse Monoclonal Antibody (HRP conjugated) [Clone ID: OTI6C6]

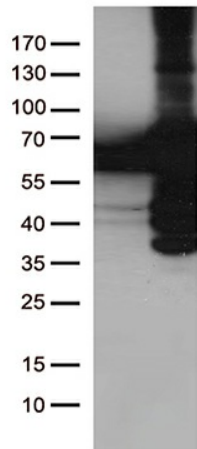
#### Product data:

Product Type:	Primary Antibodies
Clone Name:	OTI6C6
Applications:	IHC, IP, WB
Recommended Dilution:	WB 1:500~1000, IHC 1:150, IP 2ug/500ul
Reactivity:	Human, Dog, Mouse, Rat
Host:	Mouse
Isotype:	IgG2b
Clonality:	Monoclonal
Immunogen:	Full length human recombinant protein of human PLK1 (NP_005021) produced in HEK293T cell.
Formulation:	PBS (pH 7.3) containing 1% BSA, 50% glycerol.
Concentration:	0.5 mg/ml
Purification:	Purified from mouse ascites fluids or tissue culture supernatant by affinity chromatography (protein A/G)
Conjugation:	HRP
Storage:	Store at -20°C as received.
Stability:	Stable for 12 months from date of receipt.
Predicted Protein Size:	68.1 kDa
Gene Name:	polo like kinase 1
Database Link:	<a href="#">NP_005021</a> <a href="#">Entrez Gene 18817 Mouse</a> <a href="#">Entrez Gene 25515 Rat</a> <a href="#">Entrez Gene 489971 Dog</a> <a href="#">Entrez Gene 5347 Human</a> <a href="#">P53350</a>
Synonyms:	PLK; STPK13
Protein Families:	Druggable Genome, Protein Kinase
Protein Pathways:	Cell cycle, Oocyte meiosis, Progesterone-mediated oocyte maturation

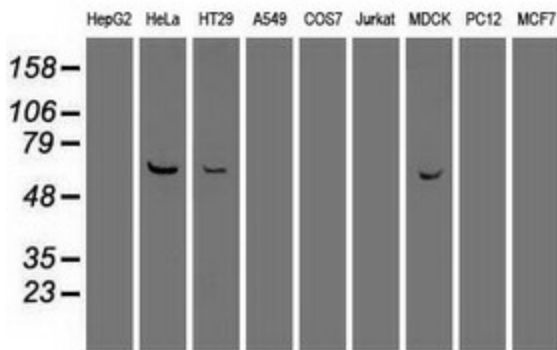


[View online »](#)

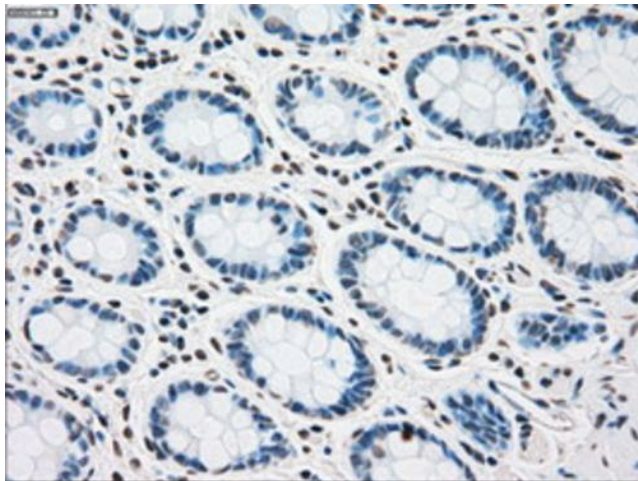
**Product images:**



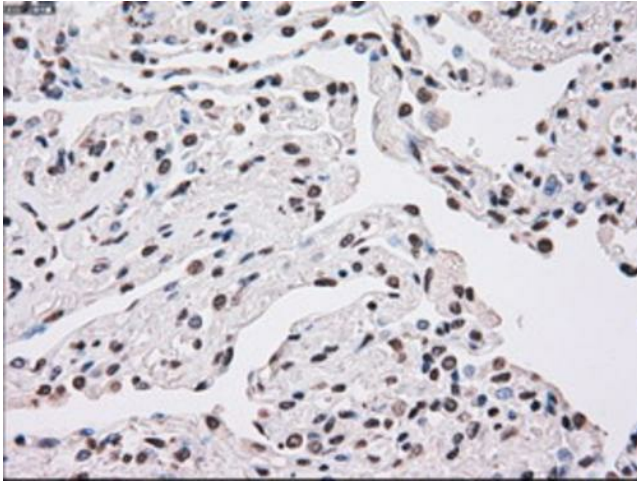
HEK293T cells were transfected with the pCMV6-ENTRY control (Left lane) or pCMV6-ENTRY PLK1 ([RC201795], Right lane) cDNA for 48 hrs and lysed. Equivalent amounts of cell lysates (5 ug per lane) were separated by SDS-PAGE and immunoblotted with anti-PLK1. (1: Positive lysates [LY417592] (100ug) and [LC417592] (20ug) can be purchased separately from OriGene.



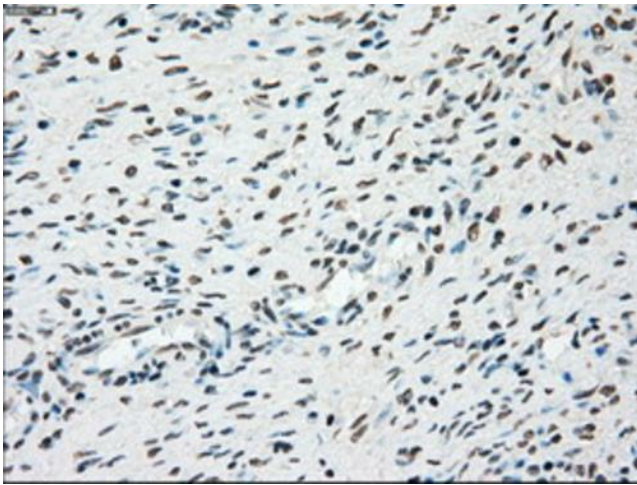
Western blot analysis of extracts (35ug) from 9 different cell lines by using anti-PLK1 monoclonal antibody (HepG2: human; HeLa: human; SVT2: mouse; A549: human; COS7: monkey; Jurkat: human; MDCK: canine; PC12: rat; MCF7: human).



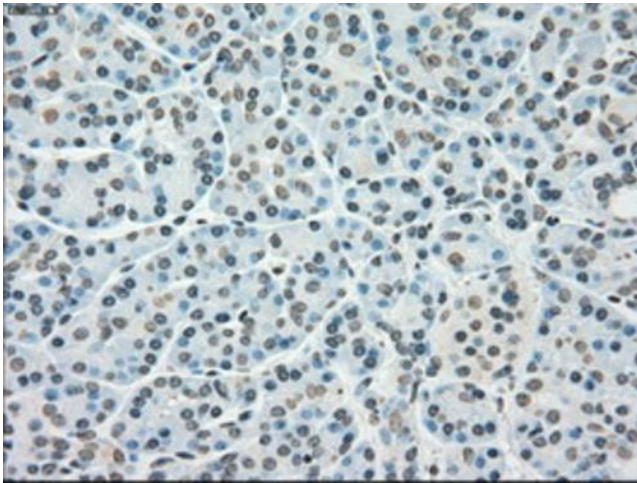
Immunohistochemical staining of paraffin-embedded Human colon tissue within the normal limits using anti-PLK1 mouse monoclonal antibody. (Heat-induced epitope retrieval by 10mM citric buffer, pH6.0, 100°C for 10min, [TA500401])



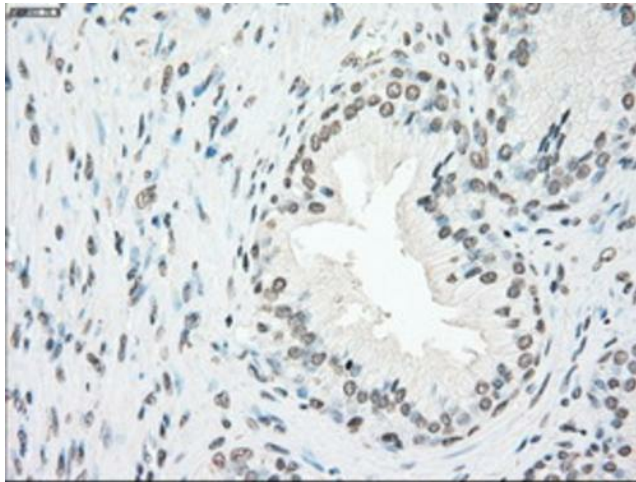
Immunohistochemical staining of paraffin-embedded Human lung tissue within the normal limits using anti-PLK1 mouse monoclonal antibody. (Heat-induced epitope retrieval by 10mM citric buffer, pH6.0, 100°C for 10min, [TA500401])



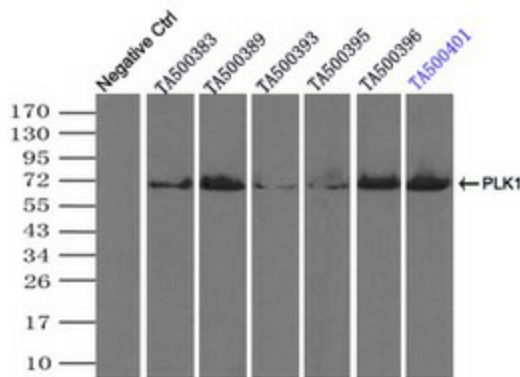
Immunohistochemical staining of paraffin-embedded Human Ovary tissue within the normal limits using anti-PLK1 mouse monoclonal antibody. (Heat-induced epitope retrieval by 10mM citric buffer, pH6.0, 100°C for 10min, [TA500401])



Immunohistochemical staining of paraffin-embedded Human pancreas tissue within the normal limits using anti-PLK1 mouse monoclonal antibody. (Heat-induced epitope retrieval by 10mM citric buffer, pH6.0, 100°C for 10min, [TA500401])



Immunohistochemical staining of paraffin-embedded Human prostate tissue within the normal limits using anti-PLK1 mouse monoclonal antibody. (Heat-induced epitope retrieval by 10mM citric buffer, pH6.0, 100°C for 10min, [TA500401])



Immunoprecipitation (IP) of PLK1 by using TrueMab monoclonal anti-PLK1 antibodies (Negative control: IP without adding anti-PLK1 antibody.). For each experiment, 500ul of DDK tagged PLK1 overexpression lysates (at 1:5 dilution with HEK293T lysate), 2ug of anti-PLK1 antibody and 20ul (0.1mg) of goat anti-mouse conjugated magnetic beads were mixed and incubated overnight. After extensive wash to remove any non-specific binding, the immunoprecipitated products were analyzed with rabbit anti-DDK polyclonal antibody.