

## Product datasheet for **TA500381**

### TRPM4 Mouse Monoclonal Antibody [Clone ID: OTI10H5]

#### Product data:

Product Type:	Primary Antibodies
Clone Name:	OTI10H5
Applications:	IHC, WB
Recommended Dilution:	WB 1:5000~10000, IHC 1:50
Reactivity:	Human, Dog, Monkey
Host:	Mouse
Isotype:	IgG1
Clonality:	Monoclonal
Immunogen:	Full length human recombinant protein of human TRPM4 (NP_060106) produced in HEK293T cell.
Formulation:	PBS (pH 7.3) containing 1% BSA, 50% glycerol and 0.02% sodium azide.
Concentration:	1 mg/ml
Purification:	Purified from mouse ascites fluids or tissue culture supernatant by affinity chromatography (protein A/G)
Conjugation:	Unconjugated
Storage:	Store at -20°C as received.
Stability:	Stable for 12 months from date of receipt.
Predicted Protein Size:	134.3 kDa
Gene Name:	transient receptor potential cation channel subfamily M member 4
Database Link:	<a href="#">NP_060106</a> <a href="#">Entrez Gene 484385 Dog</a> <a href="#">Entrez Gene 719120 Monkey</a> <a href="#">Entrez Gene 54795 Human</a> <a href="#">Q8TD43</a>



[View online »](#)

**Background:**

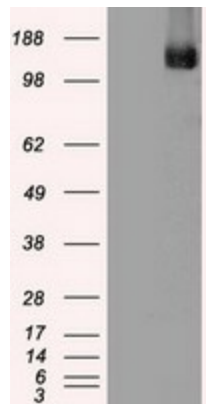
Calcium-activated non selective (CAN) cation channel that mediates membrane depolarization. While it is activated by increase in intracellular  $Ca^{2+}$ , it is impermeable to it. Mediates transport of monovalent cations ( $Na^{+}$  >  $K^{+}$  >  $Cs^{+}$  >  $Li^{+}$ ), leading to depolarize the membrane. It thereby plays a central role in cardiomyocytes, neurons from entorhinal cortex, dorsal root and vomeronasal neurons, endocrine pancreas cells, kidney epithelial cells, cochlea hair cells etc. Participates in T-cell activation by modulating  $Ca^{2+}$  oscillations after T lymphocyte activation, which is required for NFAT-dependent IL2 production. Involved in myogenic constriction of cerebral arteries. Controls insulin secretion in pancreatic beta-cells. May also be involved in pacemaking or could cause irregular electrical activity under conditions of  $Ca^{2+}$  overload.

**Synonyms:**

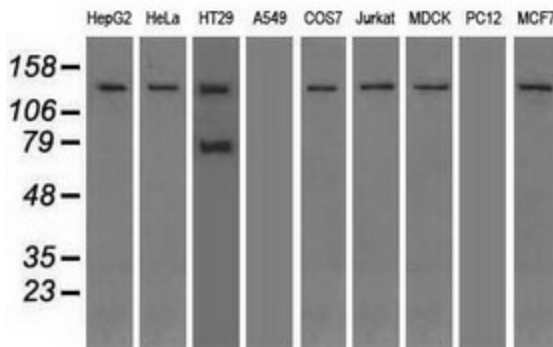
hTRPM4; LTrpC4; PFHB1B; TRPM4B

**Protein Families:**

Druggable Genome, Ion Channels: Transient receptor potential, Transmembrane

**Product images:**


HEK293T cells were transfected with the pCMV6-ENTRY control (Cat# [PS100001], Left lane) or pCMV6-ENTRY TRPM4 (Cat# [RC216888], Right lane) cDNA for 48 hrs and lysed. Equivalent amounts of cell lysates (5 ug per lane) were separated by SDS-PAGE and immunoblotted with anti-TRPM4 (Cat# TA500381). Positive lysates [LY413636] (100ug) and [LC413636] (20ug) can be purchased separately from OriGene.



Western blot analysis of extracts (35ug) from 9 different cell lines by using anti-TRPM4 monoclonal antibody.

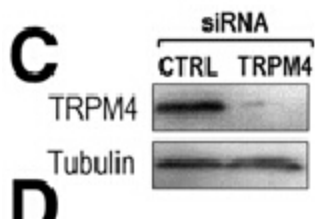
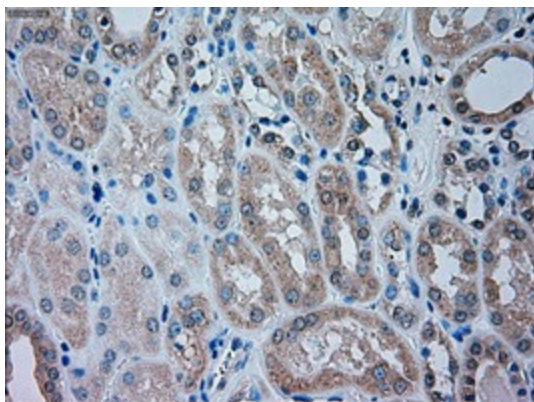
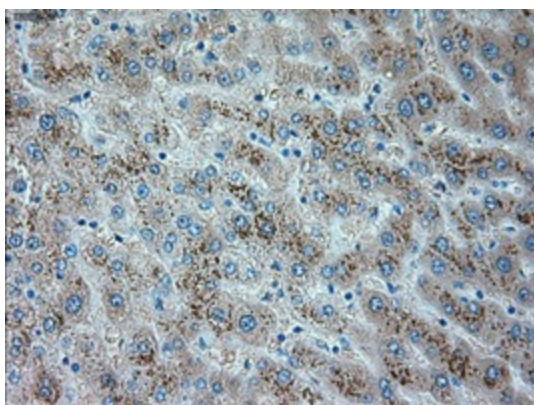


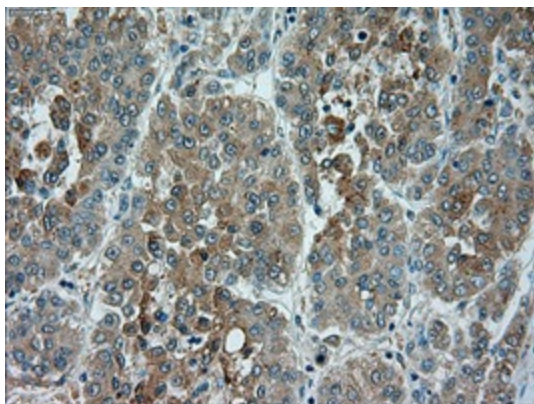
Figure from citation: Western Blot of TRPM4 protein level by using anti-TRPM4 antibody in human endothelial cells. [View Citation](#)



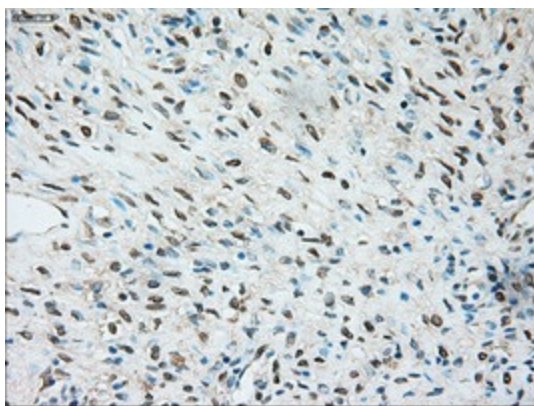
Immunohistochemical staining of paraffin-embedded Human Kidney tissue within the normal limits using anti-TRPM4 mouse monoclonal antibody. (Heat-induced epitope retrieval by 10mM citric buffer, pH6.0, 100°C for 10min, TA500381)



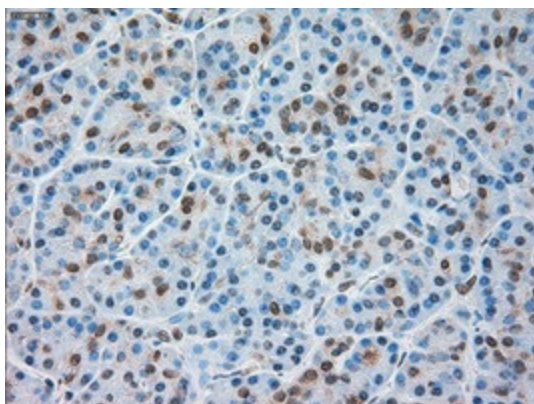
Immunohistochemical staining of paraffin-embedded Human liver tissue within the normal limits using anti-TRPM4 mouse monoclonal antibody. (Heat-induced epitope retrieval by 10mM citric buffer, pH6.0, 100°C for 10min, TA500381)



Immunohistochemical staining of paraffin-embedded Carcinoma of Human liver tissue using anti-TRPM4 mouse monoclonal antibody. (Heat-induced epitope retrieval by 10mM citric buffer, pH6.0, 100°C for 10min, TA500381)



Immunohistochemical staining of paraffin-embedded Human Ovary tissue within the normal limits using anti-TRPM4 mouse monoclonal antibody. (Heat-induced epitope retrieval by 10mM citric buffer, pH6.0, 100°C for 10min, TA500381)



Immunohistochemical staining of paraffin-embedded Human pancreas tissue within the normal limits using anti-TRPM4 mouse monoclonal antibody. (Heat-induced epitope retrieval by 10mM citric buffer, pH6.0, 100°C for 10min, TA500381)