

## Product datasheet for **TA500274**

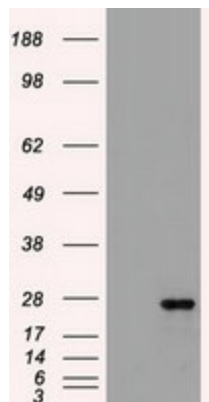
### Flt3 ligand (FLT3LG) Mouse Monoclonal Antibody [Clone ID: OTI8D10]

#### Product data:

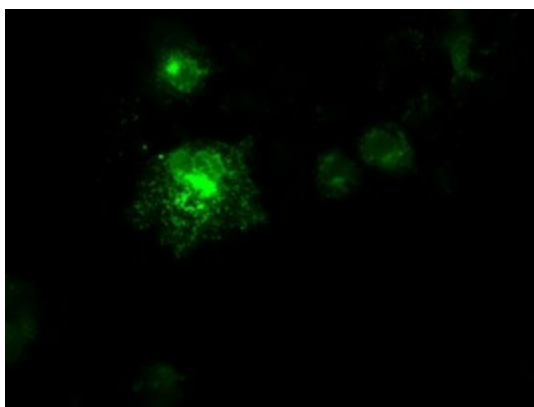
Product Type:	Primary Antibodies
Clone Name:	OTI8D10
Applications:	IF, WB
Recommended Dilution:	WB 1:1000
Reactivity:	Human
Host:	Mouse
Isotype:	IgG1
Clonality:	Monoclonal
Immunogen:	Recombinant protein expressed in E.coli corresponding to amino acids 27-181 of human FLT3LG
Formulation:	PBS (pH 7.3) containing 1% BSA, 50% glycerol and 0.02% sodium azide.
Concentration:	1 mg/ml
Purification:	Purified from mouse ascites fluids or tissue culture supernatant by affinity chromatography (protein A/G)
Conjugation:	Unconjugated
Storage:	Store at -20°C as received.
Stability:	Stable for 12 months from date of receipt.
Predicted Protein Size:	26.4 kDa
Gene Name:	fms related receptor tyrosine kinase 3 ligand
Database Link:	<a href="#">NP_001450</a> <a href="#">Entrez Gene 2323 Human</a> <a href="#">P49771</a>
Background:	Stimulates the proliferation of early hematopoietic cells. Synergizes well with a number of other colony stimulating factors and interleukins
Synonyms:	FL; FLT3L
Protein Families:	Druggable Genome, ES Cell Differentiation/IPS, Secreted Protein, Transmembrane
Protein Pathways:	Cytokine-cytokine receptor interaction, Hematopoietic cell lineage, Pathways in cancer



[View online »](#)

**Product images:**

HEK293T cells were transfected with the pCMV6-ENTRY control (Cat# [PS100001], Left lane) or pCMV6-ENTRY FLT3LG (Cat# [RC222242], Right lane) cDNA for 48 hrs and lysed. Equivalent amounts of cell lysates (5 ug per lane) were separated by SDS-PAGE and immunoblotted with anti-FLT3LG (Cat# TA500274). Positive lysates [LY419927] (100ug) and [LC419927] (20ug) can be purchased separately from OriGene.



Anti-FLT3LG mouse monoclonal antibody (TA500274) immunofluorescent staining of COS7 cells transiently transfected by pCMV6-ENTRY FLT3LG ([RC222242]).