

Product datasheet for **TA500186AM**

GATA6 Mouse Monoclonal Antibody (Biotin conjugated) [Clone ID: OTI2B3]

Product data:

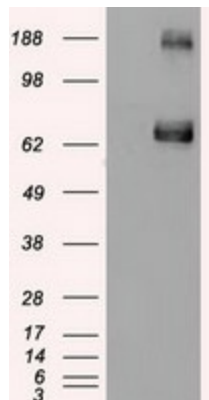
Product Type:	Primary Antibodies
Clone Name:	OTI2B3
Applications:	IF, IHC, WB
Recommended Dilution:	WB 1:500, IHC 1:50, IF 1:50~100
Reactivity:	Human, Mouse, Rat
Host:	Mouse
Isotype:	IgG2a
Clonality:	Monoclonal
Immunogen:	Human recombinant protein fragment corresponding to amino acids 300-449 of human GATA6 (NP_005248) produced in E.coli.
Formulation:	PBS (pH 7.3) containing 1% BSA, 50% glycerol and 0.02% sodium azide.
Concentration:	0.5 mg/ml
Purification:	Purified from mouse ascites fluids or tissue culture supernatant by affinity chromatography (protein A/G)
Conjugation:	Biotin
Storage:	Store at -20°C as received.
Stability:	Stable for 12 months from date of receipt.
Predicted Protein Size:	59.9 kDa
Gene Name:	GATA binding protein 6
Database Link:	NP_005248 Entrez Gene 14465 Mouse Entrez Gene 29300 Rat Entrez Gene 2627 Human Q92908
Background:	The GATA family of transcription factors, which contain zinc fingers in their DNA binding domain, have emerged as candidate regulators of gene expression in hematopoietic cells (Tsai et al., 1994 [PubMed 8078582]). GATA6 Thought to be important for regulating terminal differentiation and/or proliferation.
Synonyms:	GATA-binding protein 6; GATA binding protein 6; transcription factor GATA-6



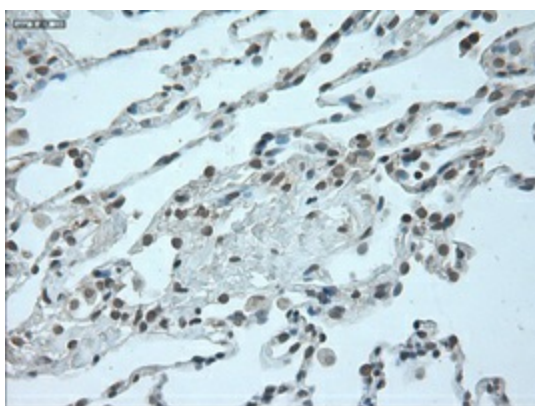
[View online »](#)

Protein Families: Embryonic stem cells, ES Cell Differentiation/IPS, Transcription Factors

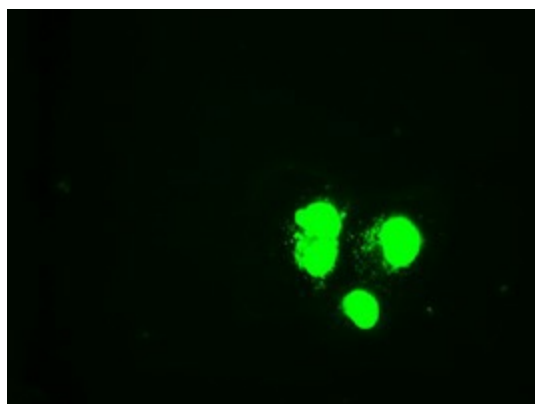
Product images:



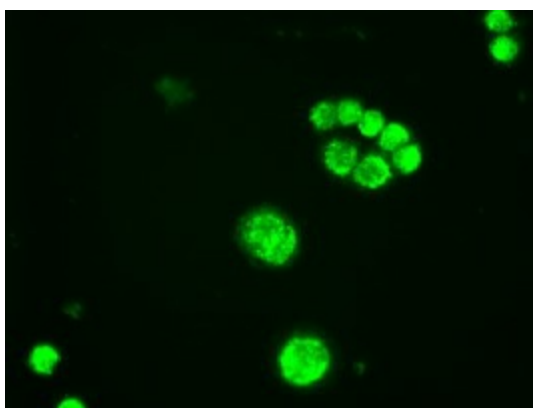
HEK293T cells were transfected with the pCMV6-ENTRY control (Cat# [PS100001], Left lane) or pCMV6-ENTRY GATA6 (Cat# [RC220721], Right lane) cDNA for 48 hrs and lysed. Equivalent amounts of cell lysates (5 ug per lane) were separated by SDS-PAGE and immunoblotted with anti-GATA6(Cat# [TA500186]). Positive lysates [LY401617] (100ug) and [LC401617] (20ug) can be purchased separately from OriGene.



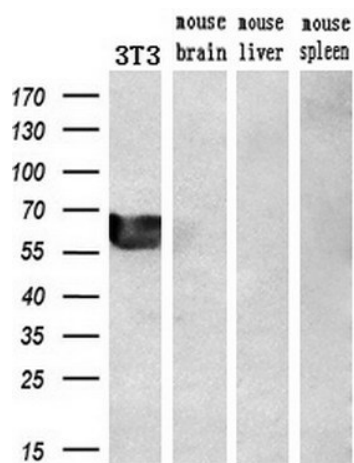
Immunohistochemical staining of paraffin-embedded Human lung tissue within the normal limits using anti-GATA6 mouse monoclonal antibody. (Heat-induced epitope retrieval by 10mM citric buffer, pH6.0, 100°C for 10min, [TA500186])



Anti-GATA6 mouse monoclonal antibody ([TA500186]) immunofluorescent staining of COS7 cells transiently transfected by pCMV6-ENTRY GATA6 ([RC220721]).



Immunofluorescent staining of HT29 cells using anti-GATA6 mouse monoclonal antibody ([TA500186]).



Western blot analysis of extracts (10ug) from a mouse cell line and 3 different mouse tissues by using anti-GATA6 monoclonal antibody (1:200).