

Product datasheet for **TA500066S**

IL6 Mouse Monoclonal Antibody [Clone ID: OTI2G3]

Product data:

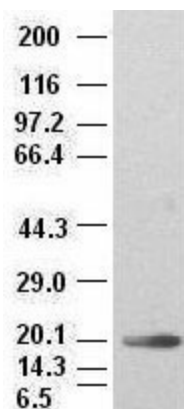
| | |
|-------------------------|---|
| Product Type: | Primary Antibodies |
| Clone Name: | OTI2G3 |
| Applications: | WB |
| Recommended Dilution: | WB 1:2000 |
| Reactivity: | Human |
| Host: | Mouse |
| Isotype: | IgM |
| Clonality: | Monoclonal |
| Immunogen: | Recombinant protein expressed in E.coli corresponding to amino acids 29-212 of human IL-6 |
| Formulation: | PBS (pH 7.3) containing 1% BSA, 50% glycerol and 0.02% sodium azide. |
| Concentration: | 1 mg/ml |
| Purification: | Purified from mouse ascites fluids or tissue culture supernatant by affinity chromatography (protein A/G) |
| Conjugation: | Unconjugated |
| Storage: | Store at -20°C as received. |
| Stability: | Stable for 12 months from date of receipt. |
| Predicted Protein Size: | 23.5 kDa |
| Gene Name: | interleukin 6 |
| Database Link: | NP_000591 Entrez Gene 3569 Human P05231 |
| Background: | IL6 is an immunoregulatory cytokine that activates a cell surface signaling assembly composed of IL6, IL6RA (IL6R; MIM 147880), and the shared signaling receptor gp130 (IL6ST; MIM 600694) |
| Synonyms: | BSF-2; BSF2; CDF; HGF; HSF; IFN-beta-2; IFNB2; IL-6 |
| Protein Families: | Druggable Genome, Secreted Protein |



[View online »](#)

Protein Pathways:

Cytokine-cytokine receptor interaction, Cytosolic DNA-sensing pathway, Graft-versus-host disease, Hematopoietic cell lineage, Hypertrophic cardiomyopathy (HCM), Jak-STAT signaling pathway, NOD-like receptor signaling pathway, Pathways in cancer, Prion diseases, Toll-like receptor signaling pathway

Product images:

IL-6 antibody (2G3) at 1:2000 + recombinant human IL-6 (Cat# [RC202078])