

Product datasheet for **TA400011**

HES1 Mouse Monoclonal Antibody [Clone ID: OTI4H1]

Product data:

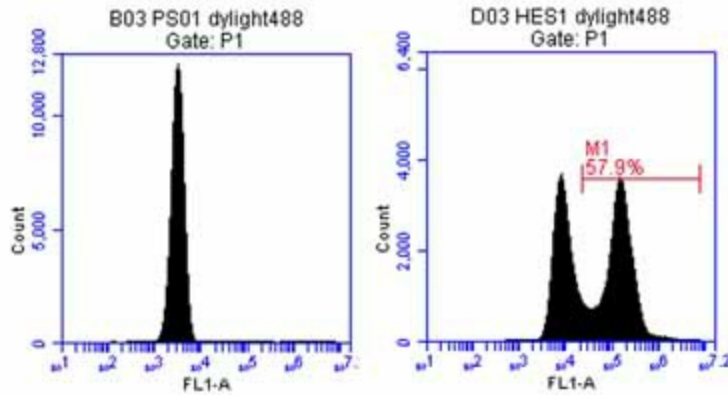
Product Type:	Primary Antibodies
Clone Name:	OTI4H1
Applications:	FC
Recommended Dilution:	FC: 1:100
Reactivity:	Human
Host:	Mouse
Isotype:	IgG1
Clonality:	Monoclonal
Immunogen:	Recombinant protein expressed in E.coli corresponding to amino acids 1-280 of human HES1
Formulation:	PBS (pH7.4) containing 50% glycerol, 0.1% BSA and 0.02% NaN ₃
Concentration:	0.5 mg/ml
Purification:	Purified from cell culture supernatant by affinity chromatography
Conjugation:	DyLight 488
Storage:	Store at -20°C as received.
Stability:	Stable for 12 months from date of receipt.
Predicted Protein Size:	29.4 kDa
Gene Name:	hes family bHLH transcription factor 1
Database Link:	NP_005515 Entrez Gene 3280 Human Q14469
Background:	This protein belongs to the basic helix-loop-helix family of transcription factors. It is a transcriptional repressor of genes that require a bHLH protein for their transcription. The protein has a particular type of basic domain that contains a helix interrupting protein that binds to the N-box rather than the canonical E-box.
Synonyms:	bHLHb39; HES-1; HHL; HRY
Protein Families:	Adult stem cells, Cancer stem cells, Druggable Genome, ES Cell Differentiation/IPs, Stem cell relevant signaling - DSL/Notch pathway, Transcription Factors



[View online »](#)

Protein Pathways: Maturity onset diabetes of the young, Notch signaling pathway

Product images:



HEK293T cells were transfected with pCMV6-ENTRY control (PS01, left panel) or HES1 cDNA (right panel) and incubated for 48 hours after transfection. The cells were detached, fixed with 2% formaldehyde for 30 min, permeabilized with 0.1% triton-X100, and then stained with DyLight488-labeled HES1 antibodies (TA400011).