

## Product datasheet for **TA397451S**

### Nfe2l2 Rabbit Polyclonal Antibody

#### Product data:

Product Type:	Primary Antibodies
Applications:	ELISA, WB
Recommended Dilution:	<b>WB:</b> 1.0 ug/ml <b>ELISA:</b> 5 ug/ml
Reactivity:	Human, Mouse
Host:	Rabbit
Clonality:	Polyclonal
Immunogen:	Anti-NRF-2 antibody was prepared from whole rabbit serum produced by repeated immunizations with a synthetic peptide corresponding near the c-term region.
Specificity:	This affinity-purified antibody is directed against mouse Nrf2 protein. The product was affinity purified from monospecific antiserum by immunoaffinity purification. A BLAST analysis was used to suggest cross reactivity with Nrf2 proteins from human, mouse, rat and bovine based on 100% homology with the immunizing sequence. Reactivity against homologues from other sources is not known.
Formulation:	0.02 M Potassium Phosphate, 0.15 M Sodium Chloride, pH 7.2
Concentration:	1.0 mg/ml - lot specific
Conjugation:	Unconjugated
Storage:	Store vial at -20° C or below prior to opening. This vial contains a relatively low volume of reagent (25 µL). To minimize loss of volume dilute 1:10 by adding 225 µL of the buffer stated above directly to the vial. Recap, mix thoroughly and briefly centrifuge to collect the volume at the bottom of the vial. Use this intermediate dilution when calculating final dilutions as recommended below. Store the vial at -20°C or below after dilution. Avoid cycles of freezing and thawing.
Stability:	Expiration date is one (1) year from date of receipt.
Gene Name:	nuclear factor, erythroid derived 2, like 2
Database Link:	<a href="#">Entrez Gene 18024 Mouse Q60795</a>



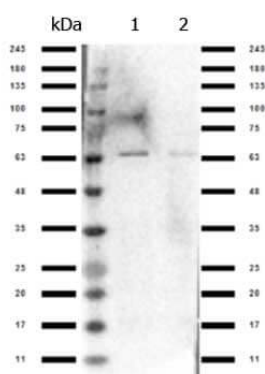
[View online »](#)

**Background:** Anti-Nrf-2 antibody was designed, produced, and validated as part of the Joy Cappel Young Investigator Award (JCYIA). Nrf2 links the transcriptional modulation of key metabolic genes to cellular growth and development and has been implicated in the control of nuclear genes required for respiration, heme biosynthesis, and mitochondrial DNA transcription and replication. Nrf2 is localized in the cytoplasm and nucleus and ubiquitously expressed with the highest concentrations in the kidney, muscle, lung, heart, liver, and brain. Anti-Nrf2 antibody is useful for researchers interested in cellular growth, transcription factor, and cancer research.

**Synonyms:** rabbit anti-Nrf2 antibody, Nrf 2, Nrf-2 Antibody, Nuclear factor erythroid 2-related factor 2, NF-E2-related factor 2, NFE2-related factor 2, Nuclear factor, erythroid derived 2, Nfe2l2, HEBP1

**Note:** This affinity purified Nrf2 antibody has been tested for use in ELISA and by western blot. Specific conditions for reactivity should be optimized by the end user. Expect a band approximately 66.9 kDa in size corresponding to Nrf-2 proteins by western blotting in the appropriate cell lysate or extract.

### Product images:



Western Blot of Rabbit Anti-Nrf2 antibody. Lane 1: HeLa Nuclear Extract (p/n W09-001-367). Lane 2: Jurkat whole cell (p/n W09-001-370). Load: 10  $\mu$ g per lane. Primary antibody: Nrf2 antibody at 1.0  $\mu$ g/ml for overnight at 4°C. Secondary antibody: Gt-a-Rb HRP (p/n 611-103-122) secondary antibody at 1:70,000 for 30 min at RT. Block: (p/n MB-070) overnight at 4°C. Predicted/Observed size: 63 kDa for Nrf2.