

## Product datasheet for **TA392970**

### CD11c (ITGAX) Mouse Monoclonal Antibody

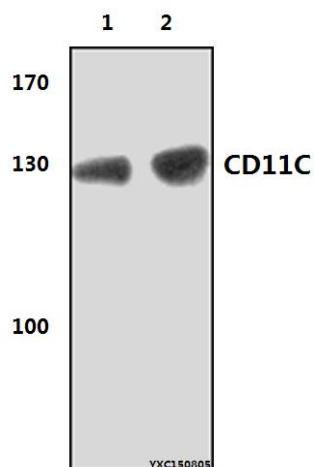
#### Product data:

Product Type:	Primary Antibodies
Applications:	WB
Recommended Dilution:	WB: 1:500~1:2000 IHC: 1:50~1:200
Reactivity:	Human, Mouse, Rat
Host:	Mouse
Isotype:	IgG
Clonality:	Monoclonal
Immunogen:	Synthetic peptide, corresponding to amino acids of Human CD11C
Specificity:	CD11C (8E3) monoclonal antibody detects endogenous levels of CD 11C protein.
Formulation:	1mg/ml in PBS with 0.02% sodium azide, 50% glycerol, pH7.2
Concentration:	1mg/ml
Conjugation:	Unconjugated
Storage:	Store at 4°C short term. Aliquot and store at -20°C long term. Avoid freeze-thaw cycles.
Stability:	1 year
Predicted Protein Size:	~ 128 kDa
Gene Name:	integrin subunit alpha X
Database Link:	<a href="#">Entrez Gene 3687 Human P20702</a>
Background:	Integrin alpha-X/beta-2 is a receptor for fibrinogen. It recognizes the sequence G-P-R in fibrinogen. It mediates cell-cell interaction during inflammatory responses. It is especially important in monocyte adhesion and chemotaxis.
Synonyms:	CD11 antigen-like family member C; CD11C; CD11c; Integrin alpha-X; ITGAX; Leukocyte adhesion glycoprotein p150,95 alpha chain; Leukocyte adhesion receptor p150,95; Leu M5
Note:	For research use only, not for use in diagnostic procedure.



[View online »](#)

## Product images:



Western blot (WB) analysis of CD11C (8E3) mAb at 1:2000 dilution Lane1:MCF-7 whole cell lysate(40µg) Lane2:HepG2 whole cell lysate(40µg)