

## Product datasheet for **TA392868**

### SLC25A6 Rabbit Polyclonal Antibody

#### Product data:

Product Type:	Primary Antibodies
Applications:	WB
Recommended Dilution:	WB: 1:500~1:1000 IHC: 1:50~1:200
Reactivity:	Human, Mouse, Rat
Host:	Rabbit
Isotype:	IgG
Clonality:	Polyclonal
Immunogen:	Synthetic peptide, corresponding to amino acids 120-160 of Human SLC25A6.
Specificity:	SLC25A6 (R155) polyclonal antibody detects endogenous levels of SLC25A6 protein.
Formulation:	Rabbit IgG, 1mg/ml in PBS with 0.02% sodium azide, 50% glycerol, pH7.2
Concentration:	1mg/ml
Conjugation:	Unconjugated
Storage:	Store at 4°C short term. Aliquot and store at -20°C long term. Avoid freeze-thaw cycles.
Stability:	1 year
Predicted Protein Size:	~ 33 kDa
Gene Name:	solute carrier family 25 member 6
Database Link:	<a href="#">Entrez Gene 293 Human P12236</a>



[View online »](#)

**Background:**

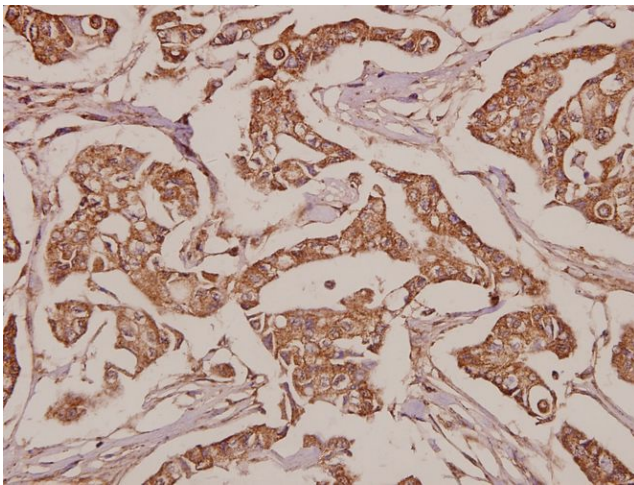
ANT2 (adenine nucleotide translocator 2), also known as SLC25A5 (solute carrier family 25 (mitochondrial carrier; adenine nucleotide translocator), member 5), T2, T3, 2F1 or AAC2, is a 298 amino acid multi-pass membrane protein that localizes to the inner mitochondrial membrane and contains three solcar repeats. Existing as one of the most abundant mitochondrial proteins, ANT2 functions as a homodimer that facilitates the exchange of ADP and ATP between the mitochondrion and the cytosol, thus linking the compartment of ATP production (within the mitochondrion) to the areas of ATP utilization (within the cytosol). Suppression of ANT2 in breast cancer cells results in apoptosis and tumor growth inhibition, suggesting that ANT2 may be involved in carcinogenesis. ANT3 (adenine nucleotide translocator 2) is a 298 amino acid mitochondrial protein that functions in a similar manner to ANT2 but, unlike ANT2, may also play a role in the formation of the permeability transition pore complex (PTPC), a structure that is important for the regulation of apoptosis.

**Synonyms:**

Adenine nucleotide translocator 3; ADP,ATP carrier protein, isoform T2; ADP,ATP carrier protein 3; ADP/ATP translocase 3; ANT 2; ANT 3; ANT3; ORF Names: CDABP0051; SLC25A6; Solute carrier family 25 member 6

**Note:**

For research use only, not for use in diagnostic procedure.

**Product images:**

Immunohistochemistry (IHC) analyzes of SLC25A6 (R155) pAb in paraffin-embedded human breast carcinoma tissue at 1:50.