

Product datasheet for **TA392854**

Cytokeratin 19 (KRT19) Rabbit Polyclonal Antibody

Product data:

Product Type:	Primary Antibodies
Applications:	WB
Recommended Dilution:	WB: 1:500~1:1000 IHC: 1:50~1:200
Reactivity:	Human, Mouse, Rat
Host:	Rabbit
Isotype:	IgG
Clonality:	Polyclonal
Immunogen:	Synthetic peptide, corresponding to amino acids 321-370 of Human Cytokeratin 19.
Specificity:	Cytokeratin 19 (L349) polyclonal antibody detects endogenous levels of Cytokeratin 19 protein.
Formulation:	Rabbit IgG, 1mg/ml in PBS with 0.02% sodium azide, 50% glycerol, pH7.2
Concentration:	1mg/ml
Conjugation:	Unconjugated
Storage:	Store at 4°C short term. Aliquot and store at -20°C long term. Avoid freeze-thaw cycles.
Stability:	1 year
Predicted Protein Size:	~ 44 kDa
Gene Name:	keratin 19
Database Link:	Entrez Gene 3880 Human P08727



[View online »](#)

Background:

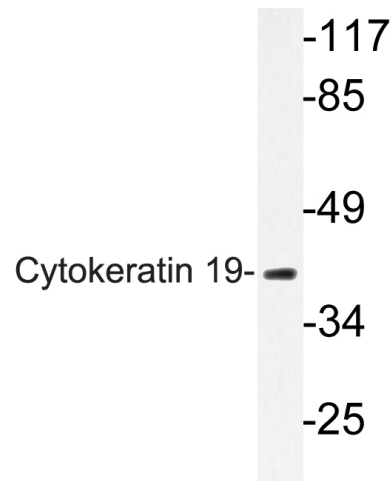
This protein is a member of the keratin family. The keratins are intermediate filament proteins responsible for the structural integrity of epithelial cells and are subdivided into cytokeratins and hair keratins. The type I cytokeratins consist of acidic proteins which are arranged in pairs of heterotypic keratin chains. Unlike its related family members, this smallest known acidic cytokeratin is not paired with a basic cytokeratin in epithelial cells. It is specifically expressed in the periderm, the transiently superficial layer that envelops the developing epidermis. Keratin 19 is not expressed in hepatocytes, therefore, antibody to keratin 19 is useful in the identification of liver metastasis. The degree of keratin 19 positivity in breast cancer distinguishes malignant from benign tumours. Keratin 19 is often co-expressed with keratin 7.

Synonyms:

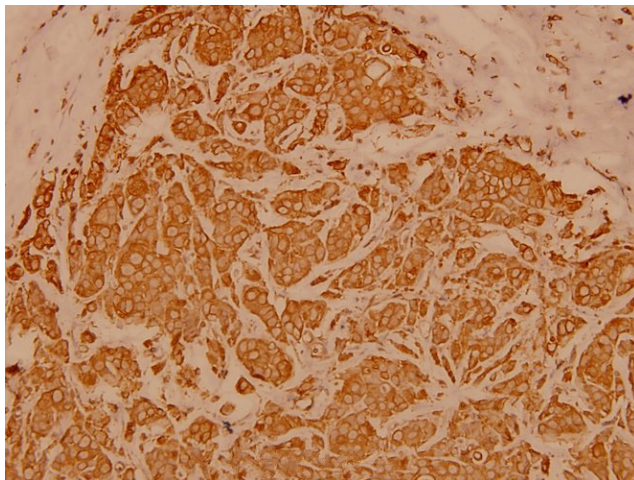
CK-19; Cytokeratin-19; K19; Keratin, type I cytoskeletal 19; Keratin-19; KRT19

Note:

For research use only, not for use in diagnostic procedure.

Product images:


Western blot (WB) analysis of Cytokeratin 19 (L349) polyclonal antibody at 1:500 dilution
 Lane1:Hela whole cell lysate(40ug) Lane2:MCF-7 whole cell lysate(40ug) Lane3:SGC7901 whole cell lysate(40ug) Lane4:NIH-3T3 whole cell lysate(40ug) Lane5:C6 whole cell lysate(40ug)



Immunohistochemistry (IHC) analyzes of Cytokeratin 19 (L349) pAb in paraffin-embedded human breast carcinoma tissue at 1:100.