

Product datasheet for **TA392643**

Rabbit Polyclonal Antibody

Product data:

Product Type:	Primary Antibodies
Applications:	WB
Recommended Dilution:	WB: 1:500~1:1000 IHC: 1:50~1:200
Reactivity:	Human, Mouse, Rat
Host:	Rabbit
Isotype:	IgG
Clonality:	Polyclonal
Immunogen:	Recombinant full length Human AKT1.
Specificity:	AKT polyclonal antibody detects endogenous levels of total AKT protein.
Formulation:	Rabbit IgG, 1mg/ml in PBS with 0.02% sodium azide, 50% glycerol, pH7.2
Concentration:	1mg/ml
Conjugation:	Unconjugated
Storage:	Store at 4°C short term. Aliquot and store at -20°C long term. Avoid freeze-thaw cycles.
Stability:	1 year
Predicted Protein Size:	~ 60 kDa
Database Link:	P31749/P31751/Q9Y243
Background:	AKT, also known as protein kinase B (PKB), is a 57 kDa serine/threonine protein kinase. There are three mammalian isoforms of Akt: AKT1 (PKB alpha), AKT2 (PKB beta) and AKT3 (PKB gamma) with AKT2 and AKT3 being approximately 82% identical with the AKT1 isoform. Each isoform has a pleckstrin homology (PH) domain, a kinase domain and a carboxy terminal regulatory domain. AKT was originally cloned from the retrovirus AKT8, and is a key regulator of many signal transduction pathways. Its tight control over cell proliferation and cell viability are manifold; overexpression or inappropriate activation of AKT has been seen in many types of cancer.



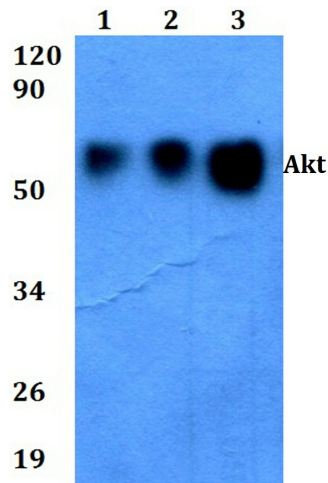
[View online »](#)

Synonyms:

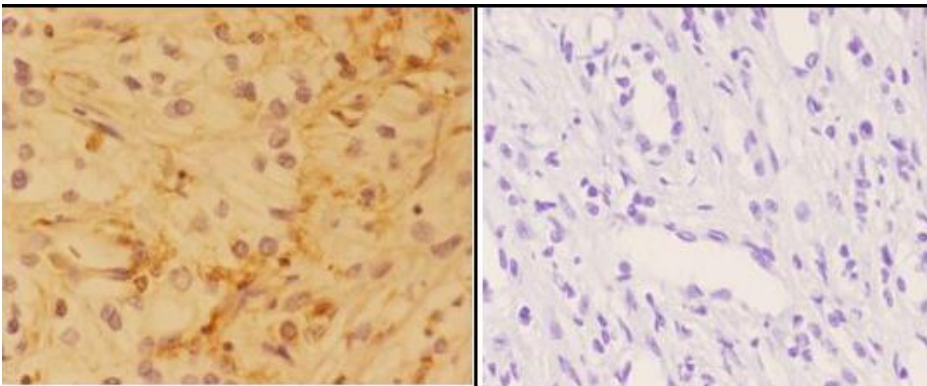
AKT1; AKT2; AKT3; PKB; PKB alpha; PKB beta; PKBG; PKB gamma; PKB α ; PKB β ; PKB γ ; Protein kinase Akt-2; Protein kinase Akt-3; Protein kinase B; Protein kinase B alpha; Protein kinase B beta; Protein kinase B gamma; Proto-oncogene c-Akt; RAC; RAC-alpha serine/threonine-protein kinase; RAC-beta serine/threonine-protein kinase; RAC-gamma serine/threonine-protein kinase; RAC-PK-alpha; RAC-PK-beta; RAC-PK-gamma; STK-2

Note:

For research use only, not for use in diagnostic procedure.

Product images:


Western blot (WB) analysis of Akt polyclonal antibody at 1:500 dilution Lane1:L02 whole cell lysate(40ug) Lane2:A549 whole cell lysate(40ug) Lane3:HEK293T whole cell lysate(40ug) Lane4:C6 whole cell lysate(40ug) Lane5:BV2 whole cell lysate(40ug)



Immunohistochemistry (IHC) analyzes of AKT pAb in paraffin-embedded human kidney carcinoma tissue at 1:50, showing cytoplasm and nucleus staining. Negative control (the right) Using PBS instead of primary antibody, secondary antibody is Goat Anti-Rabbit IgG-biotin followed by avidin-peroxidase.