

## Product datasheet for **TA386483**

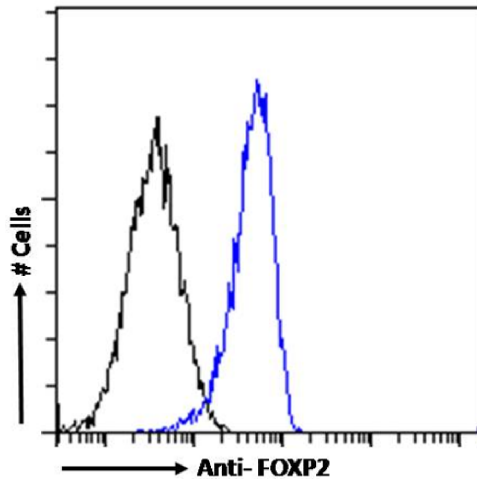
### FOXP2 Rabbit Monoclonal Antibody [Clone ID: RAB-S249]

#### Product data:

Product Type:	Primary Antibodies
Clone Name:	RAB-S249
Applications:	ELISA, FC
Reactivity:	Human
Host:	Rabbit
Isotype:	IgG, kappa
Clonality:	Monoclonal
Immunogen:	This antibody was obtained by recombinant antibody (rAb) phage display recognizing FOXP2 protein under non-denaturing conditions.
Specificity:	<p>This antibody recognizes FOXP2 (Forkhead box protein P2). It binds to a folded domain, amino acids 306-411. FOXP2 is a transcriptional repressor that plays a role in the specification and differentiation of lung epithelium.</p> <p>This antibody has been used and recommended for the following methods: ELISA; spiked-IP; FC.</p>
Formulation:	PBS with 0.02% Proclin 300.
Concentration:	lot specific
Conjugation:	Unconjugated
Storage:	Please store at 4°C for up to 3 months. For longer storage, aliquot and store at -20°C. Avoid freeze and thaw cycles.
Stability:	3 years from dispatch.
Gene Name:	forkhead box P2
Database Link:	<a href="#">Entrez Gene 93986 Human O15409</a>
Synonyms:	CAGH44; DKFZp686H1726; OTTHUMP00000196932; SPCH1; TNRC10
Note:	This chimeric rabbit antibody was made using the variable domain sequences of the original Human Fab format, for improved compatibility with existing reagents, assays and techniques.



[View online »](#)

**Product images:**

Flow cytometry using the anti-FOXP2 antibody RAB-S249 (TA386483). HepG2 cells were fixed using 2% PFA and stained with anti-unknown specificity antibody ([TA385792]; isotype control, black line) or the rabbit IgG1 version of RAB-S249 (TA386483, blue line) at a dilution of 1:100 for 1h at RT. After washing, the bound antibody was detected using a goat anti-rabbit IgG AlexaFluor® 488 antibody at a dilution of 1:1000 and cells analyzed using a FACSCanto flow-cytometer.