

## Product datasheet for **TA386404**

### CXCR1 Rabbit Monoclonal Antibody [Clone ID: SE2]

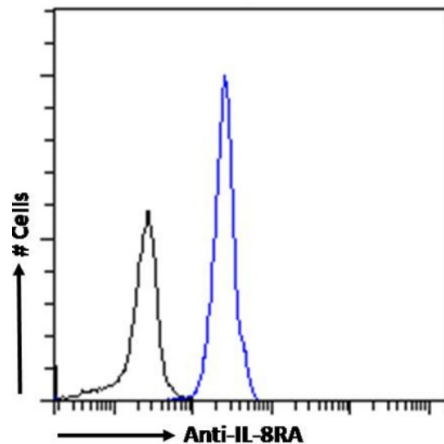
#### Product data:

Product Type:	Primary Antibodies
Clone Name:	SE2
Applications:	FC, IHC, WB
Reactivity:	Human
Host:	Rabbit
Isotype:	IgG, kappa
Clonality:	Monoclonal
Immunogen:	This antibody was raised by immunizing BALB/c mice with a BSA-conjugated peptide comprising of the N-terminal part of IL-8RA (amino acids 1-30).
Specificity:	<p>SE2 antibody is specific for IL-8RA and does not cross-react with IL-8RB. IL-8RA is a receptor to interleukin-8, which is a powerful neutrophils chemotactic factor. Binding of IL-8 to the receptor causes activation of neutrophils.</p> <p>This antibody is recommended for the detection and analysis of IL-8RA expression. One group used it to identify IL-8RA on the surface of human granulocytes via FACS (Zahn et al., 1997). Importantly, SE2 antibody was specific to IL-8RA-expressing cells only. Subsequent flow cytometric analysis with this antibody led to the characterization of IL-8RA density on human leukocytes (Zahn et al., 1997).</p>
Formulation:	PBS with 0.02% Proclin 300.
Concentration:	lot specific
Conjugation:	Unconjugated
Storage:	Please store at 4°C for up to 3 months. For longer storage, aliquot and store at -20°C. Avoid freeze and thaw cycles.
Stability:	3 years from dispatch.
Gene Name:	C-X-C motif chemokine receptor 1
Database Link:	<a href="#">Entrez Gene 3577 Human P25024</a>
Synonyms:	Il8ra

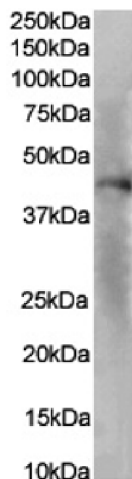
[View online »](#)

**Note:** This chimeric rabbit antibody was made using the variable domain sequences of the original Mouse IgG2b format, for improved compatibility with existing reagents, assays and techniques.

## Product images:



Flow cytometry using the Anti-IL-8RA antibody SE2 (TA386404). Paraformaldehyde fixed human peripheral blood monocytes were stained with anti-unknown specificity antibody ([TA385792]; isotype control, black line) or the rabbit IgG version of SE2 (TA386404, blue line) at a dilution of 1:100 for 1h at RT. After washing, the bound antibody was detected using a goat anti-rabbit IgG AlexaFluor® 488 antibody at a dilution of 1:1000 and cells analyzed using a FACSCanto flow-cytometer.



Western Blot using anti-IL-8RA antibody SE2 (TA386404) Human lymph node tissue lysates (35µg protein in RIPA buffer) were resolved on a SDS PAGE gel and blots were probed with the chimeric rabbit version of SE2 (TA386404) at 0.1 µg/ml before detection using an anti-rabbit secondary antibody. A primary incubation of 1h was used and protein was detected by chemiluminescence.