

Product datasheet for **TA386373**

CD59 Rabbit Monoclonal Antibody [Clone ID: 193-27]

Product data:

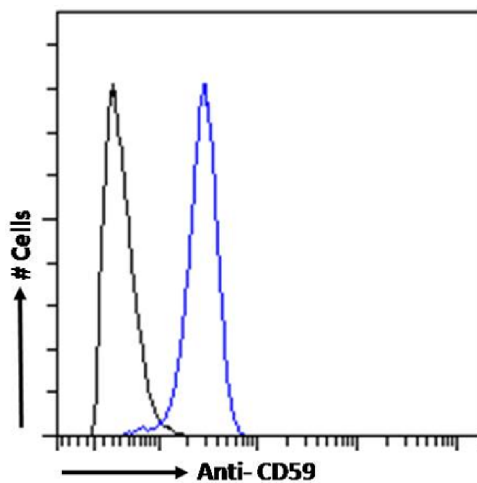
Product Type:	Primary Antibodies
Clone Name:	193-27
Applications:	FC, IF, IHC
Reactivity:	Human
Host:	Rabbit
Isotype:	IgG, kappa
Clonality:	Monoclonal
Immunogen:	This antibody was raised by immunizing mice with stimulated human leukocytes.
Specificity:	This antibody recognizes human CD59 which is a glycosyl phosphatidyl-inositol (GPI)-anchored cell surface protein. It regulates complement-mediated cell lysis, and is involved in lymphocyte signal transduction. The antibody 193-27 is recommended for the identification and analysis of CD59 via various experimental techniques (Bellosillo et al., 2001). Genetic defects in GPI-anchor attachment, that cause a reduction or loss of CD59 and CD55 on erythrocytes produce the symptoms of the disease paroxysmal hemoglobinuria (PNH) and thus this antibody is useful for study on GPI-anchored proteins, PNH and CD59 functions.
Formulation:	PBS with 0.02% Proclin 300.
Concentration:	lot specific
Conjugation:	Unconjugated
Storage:	Please store at 4°C for up to 3 months. For longer storage, aliquot and store at -20°C. Avoid freeze and thaw cycles.
Stability:	3 years from dispatch.
Gene Name:	CD59 molecule
Database Link:	Entrez Gene 966 Human P13987
Synonyms:	1F5; 16.3A5; EJ16; EJ30; EL32; FLJ38134; FLJ92039; G344; HRF-20; HRF20; MAC-IP; MACIF; MEM43; MGC2354; MIC11; MIN1; MIN2; MIN3; MIRL; MSK21; p18-20; protectin



[View online »](#)

Note: This chimeric rabbit antibody was made using the variable domain sequences of the original Mouse IgM format, for improved compatibility with existing reagents, assays and techniques.

Product images:



Flow cytometry using the anti-CD59 antibody 193-27 (TA386373). Jurkat cells were fixed using 2% PFA and stained with anti-unknown specificity antibody ([TA385792]; isotype control, black line) or the rabbit IgG1 version of 193-27 (TA386373, blue line) at a dilution of 1:100 for 1h at RT. After washing, the bound antibody was detected using a goat anti-rabbit IgG AlexaFluor® 488 antibody at a dilution of 1:1000 and cells analyzed using a FACSCanto flow-cytometer.