

Product datasheet for **TA386365**

SCARB1 Rabbit Monoclonal Antibody [Clone ID: 185-1G2 (B467)]

Product data:

Product Type:	Primary Antibodies
Clone Name:	185-1G2 (B467)
Applications:	Bl, FC, IF, IHC, IP
Reactivity:	Human
Host:	Rabbit
Isotype:	IgG, kappa
Clonality:	Monoclonal
Immunogen:	This antibody was raised by immunizing mice with stimulated human leukocytes.
Specificity:	<p>This antibody is specific against CD36. The antibody recognises an epitope between amino acids 155 - 183. CD36 is a receptor for different ligands such as phospholipids, cholesterol ester, lipoproteins, phosphatidylserine and apoptotic cells. It acts as a receptor for hepatitis C virus in hepatocytes and appears to facilitate its cell entry as well as mediates uptake of M. fortuitum, E. coli and S. aureus.</p> <p>This antibody is recommended for the detection and analysis of CD36 via various methods. For instance, it was used to stain ovarian cancer tissue samples via immunohistochemistry, demonstrating that CD36 was expressed in the cytoplasm of cancer cells while stromal cells were negative (Têtu et al., 2008). Furthermore, 185-1G2 antibody was shown to precipitate CD36 from a platelet lysate sample (Miao et al., 2001). Finally, this antibody has also blocking properties against CD36 and has been widely used to inhibit this receptor (Short et al., 2005).</p>
Formulation:	PBS with 0.02% Proclin 300.
Concentration:	lot specific
Conjugation:	Unconjugated
Storage:	Please store at 4°C for up to 3 months. For longer storage, aliquot and store at -20°C. Avoid freeze and thaw cycles.
Stability:	3 years from dispatch.
Gene Name:	scavenger receptor class B member 1
Database Link:	Entrez Gene 949 Human Q8WTV0

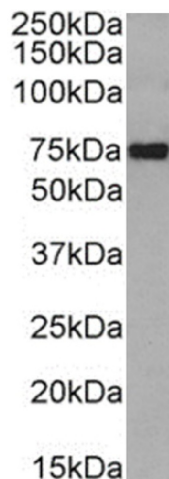


[View online »](#)

Synonyms: CD36L1; CLA-1; CLA1; MGC138242; SR-BI; SRB1

Note: This chimeric rabbit antibody was made using the variable domain sequences of the original Mouse IgM format, for improved compatibility with existing reagents, assays and techniques.

Product images:



Western Blot using anti-CD36 antibody 185-1G2 (B467) (TA386365) Human peripheral blood monocyte cell lysate (35 μ g protein in RIPA buffer) was resolved on a SDS PAGE gel and blots were probed with the chimeric rabbit version of 185-1G2 (B467) (TA386365) at 0.03 μ g/ml before detection using an anti-rabbit secondary antibody. A primary incubation of 1h was used and protein was detected by chemiluminescence.