

## Product datasheet for **TA386339**

### TSPAN1 Rabbit Monoclonal Antibody [Clone ID: 4/12]

#### Product data:

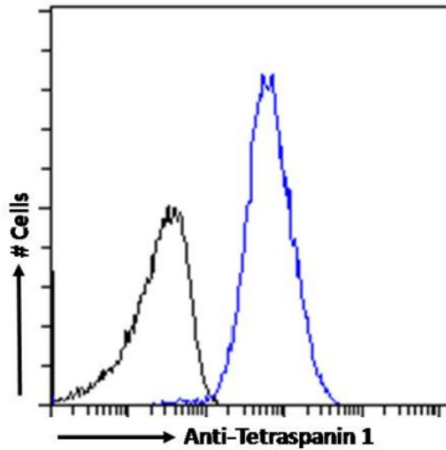
Product Type:	Primary Antibodies
Clone Name:	4/12
Applications:	ELISA, IF, IHC
Reactivity:	Human
Host:	Rabbit
Isotype:	IgG, kappa
Clonality:	Monoclonal
Immunogen:	This antibody was raised by immunising BALB/c mice with the major extracellular domain of tetraspanin 1.
Specificity:	This antibody is specific for the largest extracellular domain of tetraspanin 1.  The specificity of this antibody for tetraspanin 1 has been confirmed in ELISA analysis (Hölters et al, 2013). This antibody has been used in immunohistochemical analysis of tetraspanin 1 expression in paraffin-embedded sections of normal and cancerous cervical tissue arrays (Hölters et al, 2013), and in frozen tissue samples. This antibody has also been used for immunocytochemical staining for tetraspanin 1 expression, in SiHa cells following adenoviral transduction (Hölters et al, 2013).
Formulation:	PBS with 0.02% Proclin 300.
Concentration:	lot specific
Conjugation:	Unconjugated
Storage:	Please store at 4°C for up to 3 months. For longer storage, aliquot and store at -20°C. Avoid freeze and thaw cycles.
Stability:	3 years from dispatch.
Gene Name:	tetraspanin 1
Database Link:	<a href="#">Entrez Gene 10103 Human O60635</a>
Synonyms:	NET-1; NET1; OTTHUMP00000008900; TM4C; TM4SF; TSPAN-1



[View online »](#)

**Note:** This chimeric rabbit antibody was made using the variable domain sequences of the original Mouse IgG1 format, for improved compatibility with existing reagents, assays and techniques.

**Product images:**



Flow cytometry using the Anti-Tetraspanin 1 antibody 4/12 (TA386339). Paraformaldehyde fixed A431 cells permeabilized with 0.5% triton were stained with anti-unknown specificity antibody ([TA385792]; isotype control, black line) or the rabbit IgG version of 4/12 (TA386339, blue line) at a dilution of 1:100 for 1h at RT. After washing, the bound antibody was detected using a goat anti-rabbit IgG AlexaFluor® 488 antibody at a dilution of 1:1000 and cells analyzed using a FACSCanto flow-cytometer.